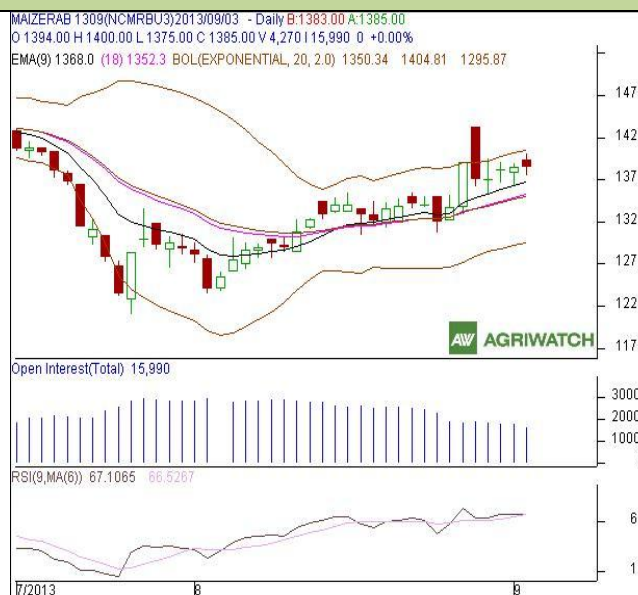


Commodity: Maize
Contract: Sep
Exchange: NCDEX
Expiry: Sep 20th, 2012
Maize – Technical Outlook
Technical Commentary:

- Candlestick chart pattern reveals range bound movement in the market.
- RSI is moving down in neutral zone.
- However, prices closed above 9 and 18 days EMAs, indicating bullish tone in near-term.

Maize prices are likely to trade range bound on Wednesday's session.


Strategy: Sell near entry level.

Intraday Supports & Resistances			S1	S2	PCP	R1	R2
Maize	NCDEX	Sep	1373	1362	1385	1398	1412
Intraday Trade Call			Call	Entry	T1	T2	SL
Maize	NCDEX	Sep	Sell	Below 1390	1380	1375	1395

* Do not carry-forward the position next day.

Disclaimer

The information and opinions contained in the document have been compiled from sources believed to be reliable. The company does not warrant its accuracy, completeness and correctness. Use of data and information contained in this report is at your own risk. This document is not, and should not be construed as, an offer to sell or solicitation to buy any commodities. This document may not be reproduced, distributed or published, in whole or in part, by any recipient hereof for any purpose without prior permission from the Company. IASL and its affiliates and/or their officers, directors and employees may have positions in any commodities mentioned in this document (or in any related investment) and may from time to time add to or dispose of any such commodities (or investment). Please see the detailed disclaimer at <http://www.agriwatch.com/Disclaimer.asp>

© 2013 Indian Agribusiness Systems Pvt Ltd.