

Commodity: Soybean
Contract: Mar
Exchange: NCDEX
Expiry: Mar 20th, 2012
SOYBEAN – Technical Outlook
Technical Commentary:

- Candlestick chart pattern indicates uptrend in the market.
- Prices closed above 9-day and 18-day EMA, indicating firm tone in near - term.
- MACD is rising in positive territory.
- RSI and stochastic are rising in overbought zone, warranting correction in the market.

The soybeans prices are likely to gain in Friday's session.


Strategy: Buy on dips.

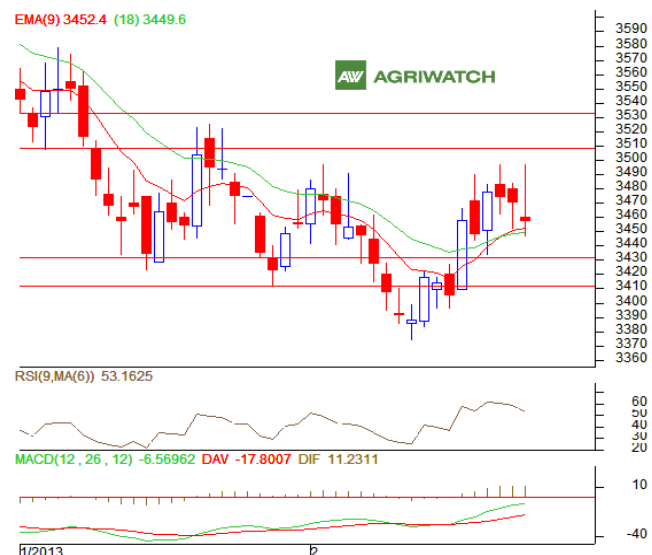
Intraday Supports & Resistances			S1	S2	PCP	R1	R2
Soybean	NCDEX	Mar	3265	3233	3336.5	3405	3445
Intraday Trade Call			Call	Entry	T1	T2	SL
Soybean	NCDEX	Mar	BUY	3326-3328	3347	3357	3317

* Do not carry-forward the position next day.

Commodity: Rapeseed/Mustard
Contract: Apr
Exchange: NCDEX
Expiry: Apr 20th, 2012
RM SEED – Technical Outlook
Technical Commentary:

- Candlestick chart pattern reveals down-trend in the market.
- However, prices closed above 9-day and 18-day EMA, indicating firm tone.
- MACD is heading upwards in negative territory.
- RSI and stochastic are easing in neutral zone, pointing out further weakness.

The RM seed prices are expected to ease in Friday's session.


Strategy: Sell on rise.

Intraday Supports & Resistances			S1	S2	PCP	R1	R2
RM Seed	NCDEX	Apr	3432	3410	3457	3507	3532
Intraday Trade Call			Call	Entry	T1	T2	SL
RM Seed	NCDEX	Apr	SELL	3465-3467	3446	3436	3476

* Do not carry-forward the position next day.

Disclaimer

The information and opinions contained in the document have been compiled from sources believed to be reliable. The company does not warrant its accuracy, completeness and correctness. Use of data and information contained in this report is at your own risk. This document is not, and should not be construed as, an offer to sell or solicitation to buy any commodities. This document may not be reproduced, distributed or published, in whole or in part, by any recipient hereof for any purpose without prior permission from the Company. IASL and its affiliates and/or their officers, directors and employees may have positions in any commodities mentioned in this document (or in any related investment) and may from time to time add to or dispose of any such commodities (or investment). Please see the detailed disclaimer at <http://www.agriwatch.com/Disclaimer.asp>
 © 2013 Indian Agribusiness Systems Pvt Ltd.