

Commodity: Soybean
Contract: Jun

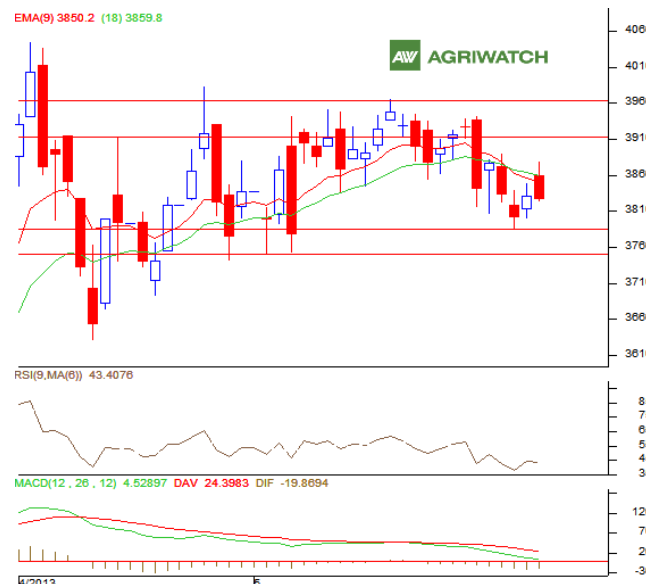
Exchange: NCDEX
Expiry: Jun 20th, 2012

SOYBEAN – Technical Outlook

Technical Commentary:

- Candlestick chart pattern reveals prices closed slightly below previous day's level.
- Prices closed above 9-day EMA, indicating firm tone in near-term.
- MACD is easing in positive territory.
- RSI is flattening and stochastic is rising in neutral region, supporting upward move.

The soybeans prices are likely to feature gains in Thursday's session.



Strategy: Buy on dips.

Intraday Supports & Resistances			S1	S2	PCP	R1	R2
Soybean	NCDEX	Jun	3785	3750	3826	3910	3965
Intraday Trade Call			Call	Entry	T1	T2	SL
Soybean	NCDEX	Jun	BUY	3816-3818	3837	3847	3807

* Do not carry-forward the position next day.

Commodity: Rapeseed/Mustard
Contract: Jun
Exchange: NCDEX
Expiry: Jun 20th, 2012
RM SEED – Technical Outlook
Technical Commentary:

- Candlestick chart pattern featured gains in the market.
- The prices closed below 9-day and 18-day EMA. Indicating weakness in the market.
- MACD is easing in negative territory.
- RSI is rising in neutral region while stochastic is heading upwards in oversold zone, supporting the gains.

The RM seed prices are expected to gain in Thursday's session.


Strategy: Buy on dips.

Intraday Supports & Resistances			S1	S2	PCP	R1	R2
RM Seed	NCDEX	Jun	3414	3390	3462	3495	3531
Intraday Trade Call			Call	Entry	T1	T2	SL
RM Seed	NCDEX	Jun	BUY	3452-3454	3473	3483	3443

* Do not carry-forward the position next day.

Disclaimer

The information and opinions contained in the document have been compiled from sources believed to be reliable. The company does not warrant its accuracy, completeness and correctness. Use of data and information contained in this report is at your own risk. This document is not, and should not be construed as, an offer to sell or solicitation to buy any commodities. This document may not be reproduced, distributed or published, in whole or in part, by any recipient hereof for any purpose without prior permission from the Company. IASL and its affiliates and/or their officers, directors and employees may have positions in any commodities mentioned in this document (or in any related investment) and may from time to time add to or dispose of any such commodities (or investment). Please see the detailed disclaimer at <http://www.agriwatch.com/Disclaimer.asp>
 © 2013 Indian Agribusiness Systems Pvt Ltd.