

Commodity: Soybean

Contract: Oct

Exchange: NCDEX

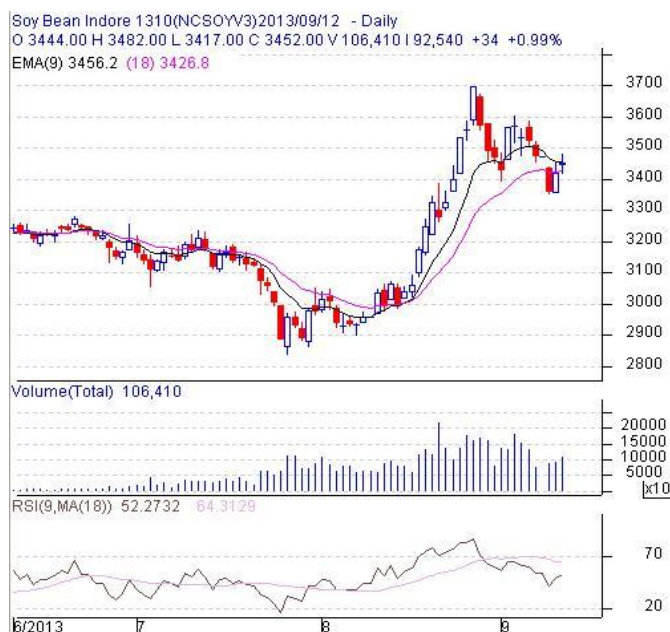
Expiry: Oct 18th, 2013

SOYBEAN – Technical Outlook

Technical Commentary:

- Candlestick chart pattern depicts weakness in the market.
- Prices closed between 9-day and 18-day EMAs indicating a sideways movement.
- RSI is rising in the neutral zone suggesting that prices may decline.

The soybean prices are likely to rise in Friday's session.



Strategy: Buy.

Intraday Support & Resistance			S1	S2	PCP	R1	R2
Soybean	NCDEX	Oct	3339	3275	3452	3517	3588
Intraday Trade Call			Call	Entry	T1	T2	SL
Soybean	NCDEX	Oct	Buy	Above 3462	3482	3490	3448

* Do not carry-forward the position next day.

Commodity: Rapeseed/Mustard
Contract: Oct
Exchange: NCDEX
Expiry: Oct 18th, 2013
RM SEED – Technical Outlook
Technical Commentary:

- Candlestick chart pattern reveals downward movement in the prices.
- The prices closed between 9-day and 18-day EMA indicating weak sentiments.
- RSI is edging upwards in the neutral region indicating likely gains.

The RM seed prices are expected to increase in Friday's session.


Strategy: Buy.

Intraday Support & Resistance			S1	S2	PCP	R1	R2
RM Seed	NCDEX	Oct	3420	3366	3550	3600	3649
Intraday Trade Call			Call	Entry	T1	T2	SL
RM Seed	NCDEX	Oct	Buy	Above 3548	3570	3578	3534

* Do not carry-forward the position next day.

Disclaimer

The information and opinions contained in the document have been compiled from sources believed to be reliable. The company does not warrant its accuracy, completeness and correctness. Use of data and information contained in this report is at your own risk. This document is not, and should not be construed as, an offer to sell or solicitation to buy any commodities. This document may not be reproduced, distributed or published, in whole or in part, by any recipient hereof for any purpose without prior permission from the Company. IASL and its affiliates and/or their officers, directors and employees may have positions in any commodities mentioned in this document (or in any related investment) and may from time to time add to or dispose of any such commodities (or investment). Please see the detailed disclaimer at <http://www.agriwatch.com/Disclaimer.asp>
 © 2013 Indian Agribusiness Systems Pvt Ltd.