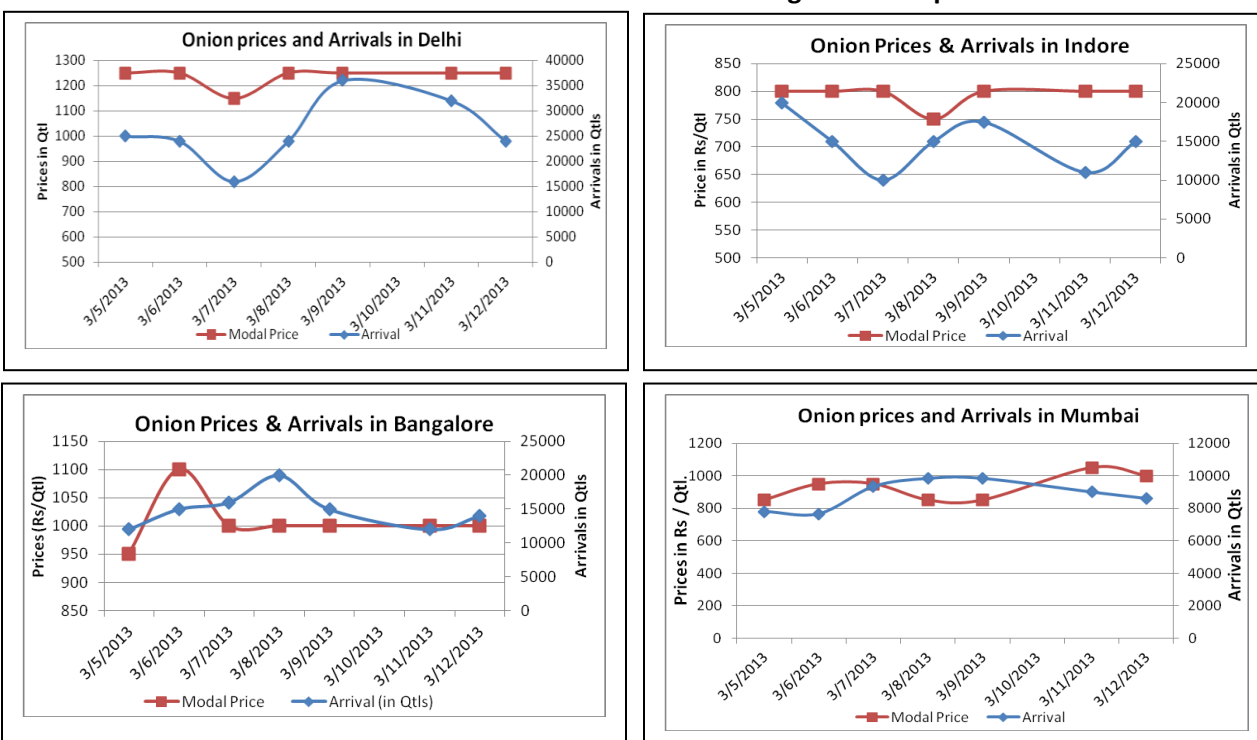


### Onion Fundamentals:

- In Bangalore, onion is arriving in market from Maharashtra region and local region (Bijapur and Gulbarga) which are contributing approximately 75% and 25% respectively.
- In Bhavnagar, arrivals are stable and expected to fall down in coming days. So, prices have increased by 5-10% compared to previous week prices.
- In Delhi, onion is arriving in market from Maharashtra region, Gujarat (Mahuva) region and M.P region which are contributing approximately 50%, 30% and 20% respectively. Prices are continuously stable from last 4-5 days and hovering in the range of Rs 1000 to Rs 1500/ quintal.
- In Northern India, maximum retail prices were seen in Dehradun and Agra at Rs 25/kg followed by Agra and Varanasi at Rs 22/kg each.

### Onion wholesale Prices & Arrivals in Producing & Consumption Centers



(Source: AGRIWATCH)

### Onion Prices & Arrivals in Major Mandis as on 12.3.2013

Mandis	Lasalgaon	Pimpalgaon	Bhavnagar	Mumbai	Indore	Bangalore	Belgaum
Price (Rs/Qtl)	1000-1050	1000-1100	975-1200	800-1200	500-1100	800-1200	Closed
Arrivals (Qtl)	4400	3000	32000	8600	15000	14000	Closed

### Onion Prices & Arrivals in Major Mandis as on 11.3.2013

Mandi	Lasalgaon	Pimpalgaon	Bhavnagar	Mumbai	Indore	Bangalore	Belgaum
Price (Rs/Qtl)	Closed	Closed	950-1300	900-1200	500-1100	800-1200	600-1200
Arrivals (Qtl)	Closed	Closed	30000	9000	11000	12000	12000

(Source: AGRIWATCH)

Onion Prices in major markets – Wholesale vs. Retail as on 12<sup>th</sup> March 2013

Centre	Wholesale Prices (Rs/ qtl)	Retail Price (Rs/ kg)	Centre	Wholesale Prices (Rs/ qtl)	Retail Price (Rs/ kg)
<b>NORTH ZONE</b>			<b>EAST ZONE</b>		
CHANDIGARH	800	20	PATNA	NR	NR
DELHI	988	21	BHAGALPUR	1700	19
HISAR	2500	27	RANCHI	NR	18
KARNAL	1900	21	BHUBANESHWAR	1450	18
SHIMLA	1600	20	CUTTACK	1400	17
MANDI	1700	20	SAMBALPUR	1450	18
SRINAGAR	NR	NR	ROURKELA	1450	19
JAMMU	1700	20	KOLKATA	1100	18
AMRITSAR	1350	17	SILIGURI		
LUDHIANA	1500	20	<b>NORTH-EAST ZONE</b>	0	0
BATHINDA	1100	17	ITANAGAR	NR	NR
LUCKNOW	1500	20	GUWAHATI	NR	20
KANPUR	1500	20	SHILLONG	3000	33
VARANASI	2000	22	AIZWAL	NR	35
AGRA	1800	22	DIMAPUR	3200	40
DEHRADUN	1900	25	AGARTALA		
<b>WEST ZONE</b>			<b>SOUTH ZONE</b>	0	0
RAIPUR	1500	17	PORT BLAIR	NR	NR
PANAJI	NR	NR	HYDERABAD	1600	18
AHMEDABAD	1250	19	VIJAYWADA	1550	17
RAJKOT	900	11	VISAKHAPATNAM	1733	22
BHOPAL	1000	12	BENGALURU	1700	19
INDORE	975	17	DHARWAD	2200	23
GWALIOR	1800	20	T.PURAM	3900	41
JABALPUR	2600	28	ERNAKULAM	3700	39
MUMBAI	1050	22	KOZHIKODE	3600	40
NAGPUR	1200	17	PUDUCHERRY	1500	18
JAIPUR	1200	20	CHENNAI	1000	13
JODHPUR	NR	NR	DINDIGUL	NR	NR
KOTA	1500	20	THIRUCHIRAPALLI	1800	20

(Source: State Civil Supplies Dept)

## Disclaimer

The information contained in this document has been compiled by Agriwatch from sources believed to be reliable, such as NHB, Agmarknet, etc. and directly from traders in mandis. However, users of this data are requested to use the information with due caution and crosscheck with other sources. This document is not, and should not be construed as an offer to sell or buy any commodities. This document may not be reproduced, distributed or published without the express consent of SFAC