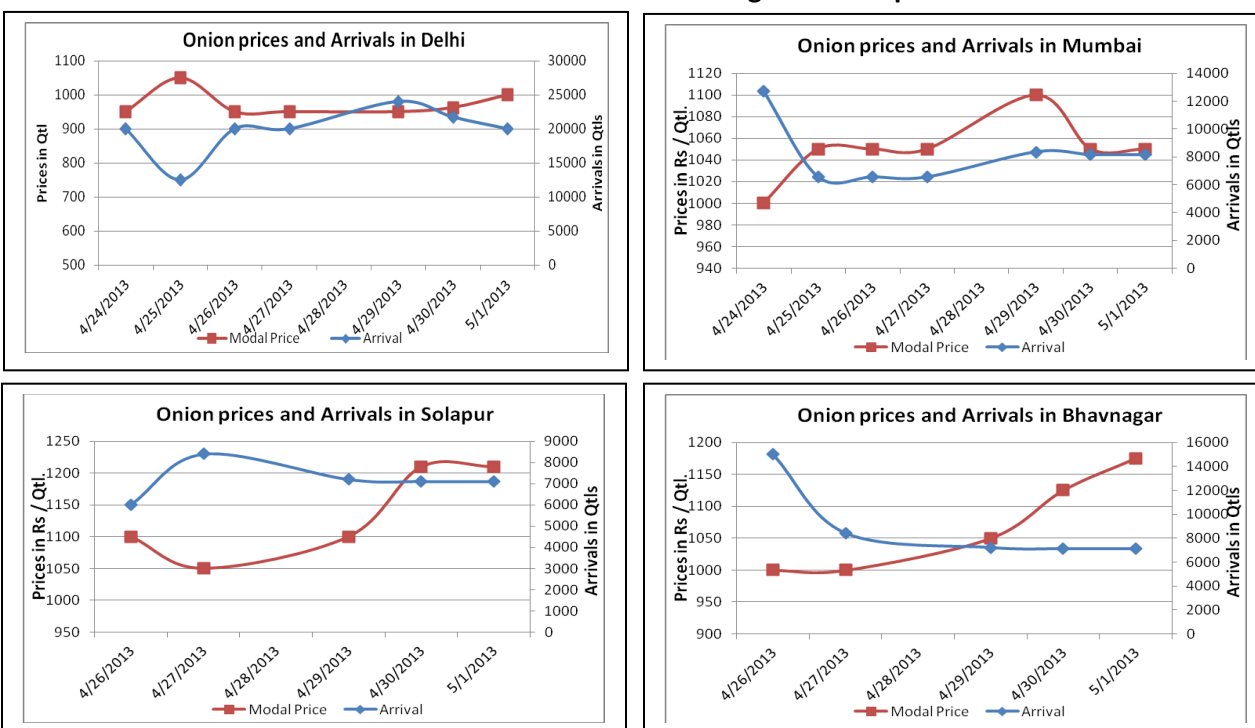


Onion Fundamentals:

- In Solapur, prices are continuously increasing from last few days and are trading at Rs 1150/ quintal from Rs 920/ quintal. The reason is continuous decline of arrivals from last few days.
- In Pimpalgaon, prices have fallen as compared to previous week by approximately Rs 50 whereas arrivals are almost same which suggest stability in market.
- In Yeola (Maharashtra), Rabi onion crop production is expected to be 10% more as compared to previous year production. According to trade sources, though the area was less but the productivity was higher.
- In Bhavnagar (Gujarat), prices of onion have increased by Rs 130/ quintal in last few days as arrivals has decreased by almost 40%.

Onion wholesale Prices & Arrivals in Producing & Consumption Centers



(Source: AGRIWATCH)

Onion Prices & Arrivals in Major Mandis as on 01.5.2013

Mandis	Lasalgaon	Pimpalgaon	Bhavnagar	Mumbai	Indore	Bangalore	Belgaum
Price (Rs/Qtl)	Closed	Closed	950-1175	Closed	Closed	Closed	1000-1100
Arrivals (Qtl)	Closed	Closed	16000	Closed	Closed	Closed	3200

Onion Prices & Arrivals in Major Mandis as on 30.4.2013

Mandis	Lasalgaon	Pimpalgaon	Bhavnagar	Mumbai	Indore	Bangalore	Belgaum
Price (Rs/Qtl)	501-911	615-964	950-1125	800-1050	500-800	570-1200	Closed
Arrivals (Qtl)	12540	25940	9500	8150	20000	12742	Closed

(Source: AGRIWATCH)

Onion Prices in major markets – Wholesale vs. Retail as on 1st May 2013

Centre	Wholesale Prices (Rs/ qtl)	Retail Price (Rs/ kg)	Centre	Wholesale Prices (Rs/ qtl)	Retail Price (Rs/ kg)
NORTH ZONE			EAST ZONE		
CHANDIGARH	NR	NR	PATNA	NR	NR
DELHI	850	18	BHAGALPUR	NR	NR
HISAR	2500	27	RANCHI	NR	NR
KARNAL	1360	18	BHUBANESHWAR	1250	16
SHIMLA	1600	20	CUTTACK	1200	15
MANDI	1450	16	SAMBALPUR	1100	14
SRINAGAR	NR	NR	ROURKELA	1200	16
JAMMU	1300	20	KOLKATA	NR	NR
AMRITSAR	1100	15	SILIGURI		
LUDHIANA	NR	NR	NORTH-EAST ZONE		
BATHINDA	NR	NR	ITANAGAR	2900	35
LUCKNOW	1500	20	GUWAHATI	NR	NR
KANPUR	1500	20	SHILLONG	1800	21
VARANASI	2000	22	AIZWAL	NR	35
AGRA	1600	20	DIMAPUR	NR	NR
DEHRADUN	1200	18	AGARTALA		
WEST ZONE			SOUTH ZONE		
RAIPUR	1300	15	PORT BLAIR	2600	28
PANAJI	NR	NR	HYDERABAD	1400	16
AHMEDABAD	1250	19	VIJAYWADA	1333	15
RAJKOT	805	10	VISAKHAPATNAM	1400	20
BHOPAL	1000	12	BENGALURU	NR	NR
INDORE	NR	NR	DHARWAD	NR	NR
GWALIOR	1800	20	T.PURAM	NR	NR
JABALPUR	1000	12	ERNAKULAM	NR	NR
MUMBAI	NR	NR	KOZHIKODE	NR	NR
NAGPUR	NR	NR	PUDUCHERRY	NR	NR
JAIPUR	1100	18	CHENNAI	NR	NR
JODHPUR	NR	NR	DINDIGUL	NR	NR
KOTA	1600	17	THIRUCHIRAPALLI	NR	NR

(Source: State Civil Supplies Dept)

Disclaimer

The information contained in this document has been compiled by Agriwatch from sources believed to be reliable, such as NHB, Agmarknet, etc. and directly from traders in mandis. However, users of this data are requested to use the information with due caution and crosscheck with other sources. This document is not, and should not be construed as an offer to sell or buy any commodities. This document may not be reproduced, distributed or published without the express consent of SFAC