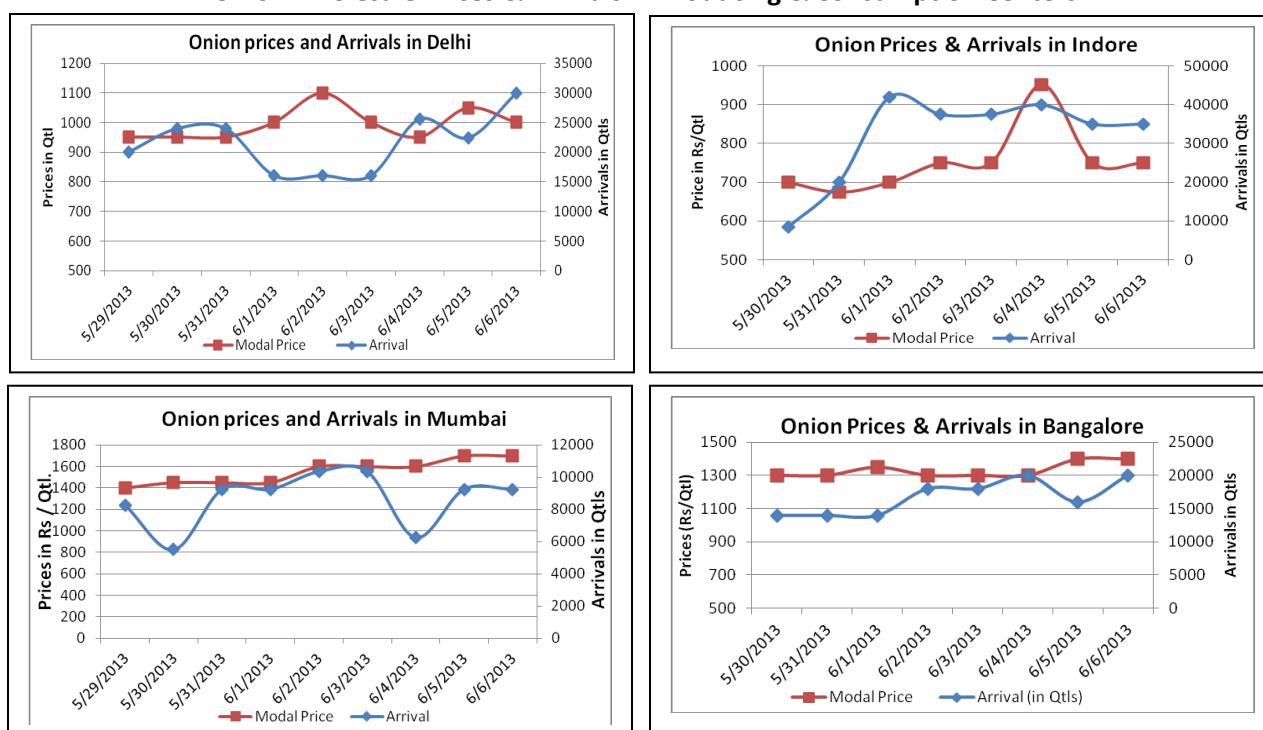


### Onion Fundamentals:

- **In Solapur**, prices have increased to Rs 1150/ quintal from Rs 1050 in last two days because of lower arrivals.
- **In Nashik**, Prices have reached to Rs 1400/ quintal from a level of Rs 1100/ quintal in last 2-3 days. Prices are continuously increasing because of higher demand.
- **New Delhi**, spot market, witnessed firm tone in onion price on superior demand. Modal prices have reached to a level of Rs 1050 from Rs 1000/ quintal in last 3-4 days.
- **In Indore**, arrivals have increased as farmers are bringing their maximum of stocks to market. According to trade sources 60- 70 % of crop is already in market.

### Onion wholesale Prices & Arrivals in Producing & Consumption Centers



(Source: AGRIWATCH)

### Onion Prices & Arrivals in Major Mandis as on 6.06.2013

Mandis	Lasalgaon	Pimpalgaon	Bhavnagar	Mumbai	Indore	Bangalore	Belgaum
Price (Rs/Qtl)	700-1451	780-1400	Closed	1200-1700	500-1000	1100-1700	550-1700
Arrivals (Qtl)	11250	14500	Closed	9250	35000	20000	3500

### Onion Prices & Arrivals in Major Mandis as on 5.06.2013

Mandis	Lasalgaon	Pimpalgaon	Bhavnagar	Mumbai	Indore	Bangalore	Belgaum
Price (Rs/Qtl)	800-1436	800-1410	1150-1450	1200-1700	500-1000	1100-1700	550-1700
Arrivals (Qtl)	15000	16375	1000	9250	35000	16000	3500

(Source: AGRIWATCH)

### Onion Prices in major markets – Wholesale vs. Retail as on 6<sup>th</sup> June 2013

Centre Name	Min. Price	Max. Price	Modal Price	Retail Price
AGRA	600	800	700	2000
BANGALORE	1100	1700	1400	2200
BHOPAL	600	700	650	900
BHUBANESHWAR	1300	1500	1400	1900
CHANDIGARH	800	1100	950	1500
CHENNAI	1600	1800	1700	2400
DEHRADUN	1100	1325	1250	2000
DELHI	800	1062	935	1600
GANGATOK	1200	1400	1300	1500
GUWAHATI	1300	1500	1400	2000
INDORE	500	1000	750	1200
JAMMU	1200	1300	1250	1600
LUCKNOW	800	1000	900	1100
PATNA	1100	1300	1200	1700
PUNE	1200	1400	1300	1700
RAIPUR	1100	1300	1200	1600
RANCHI	1050	1200	1115	1500
SRINAGAR	1300	1500	1400	2000

(Source: State Civil Supplies Dept)

#### Disclaimer

The information contained in this document has been compiled by Agriwatch from sources believed to be reliable, such as NHB, Agmarknet, etc. and directly from traders in mandis. However, users of this data are requested to use the information with due caution and crosscheck with other sources. This document is not, and should not be construed as an offer to sell or buy any commodities. This document may not be reproduced, distributed or published without the express consent of SFAC