

**Executive Summary:**

- Onion Retail prices have increased relatively more as compared to wholesale prices during last week.
- Onion arrivals in Delhi markets have halved in last week due to shortage of railway wagons for transportation. Maharashtra traders were facing similar problems for other markets also. In Delhi, approx 50% of total arrivals are coming from Bhavnagar and Nasik. Rest is coming from nearby region of Haryana and Rajasthan.
- In Bhavnagar district of Gujarat, onion arrivals are comparatively improved from last week. During 1<sup>st</sup> week of February, total arrivals were around 39755 tons where as total arrivals during 24<sup>th</sup> Jan- 31<sup>st</sup> Jan was around 33117 tons. (Source: Agmarknet)
- In Nasik district (including all markets) of Maharashtra, total arrivals during 1<sup>st</sup> week of February were reported around 46441 tons while total arrivals during 24<sup>th</sup>- 31<sup>st</sup> Jan were around 47411 tons. Total arrivals during the same time last year were 58149 tons. This means arrivals have fallen as compared to previous week and at the same time last year. (Source: Agmarknet)
- According to trade sources, prices of onion in Katmandu has increased by Rs 15 compared to previous month and prices are hovering near Rs 45/kg. The reason for increase in prices is due to short supply and soaring prices in India as it is dependent on India.

**Weekly Onion Prices (Rs/Qtl) and Arrivals (in Quintals) trend in important markets across India:**

| Center Name  | Avg. Wholesale Price (4th Feb-9th Feb) | Avg. Wholesale Price (28th Jan- 2nd Feb) | % Change in Wholesale Price over prev. week | Avg Retail Price (4th Feb-9 <sup>th</sup> Feb) | Avg Retail Price (28th Jan-2nd Feb) | % Change in Retail Price over prev. week |
|--------------|--|--|---|--|-------------------------------------|--|
| AHMEDABAD    | 1645                                   | 1529                                     | 7.59  | 2200   | 2116                                | 3.97                                     |
| BANGALORE    | 2100                                   | 2100                                     | 0.00  | 2800   | 2783                                | 0.61                                     |
| BHUBANESHWAR | 2350                                   | 2230                                     | 5.38  | 2800   | 2620                                | 6.87                                     |
| CHENNAI      | 2283                                   | 2266                                     | 0.75  | 3170   | 2866                                | 10.61                                    |
| DELHI        | 1828                                   | 1926                                     | -5.09                                       | 2800   | 2616                                | 7.03                                     |
| JAIPUR       | 1637                                   | 1407                                     | 16.35                                       | 2780   | 2370                                | 17.30                                    |
| KOLKATA      | 2324                                   | 2310                                     | 0.61  | 3183   | 3050                                | 4.36                                     |
| MUMBAI       | 1715                                   | 1940                                     | -11.60                                      | 2800   | 2750                                | 1.82                                     |
| PATNA        | 2250                                   | 2340                                     | -3.85                                       | 3000   | 2817                                | 6.50                                     |

(Source: Agriwatch, NHB)

The above table shows the wholesale and retail prices of onion in major cities of India. The relative increase in retail prices are more than wholesale prices. In some cities like Delhi, Mumbai and Patna, onion prices have decreased in wholesale mandi over previous week but it has increased in retail markets. This could be due to stable demand amid inadequate supply or retailers are taking benefit of fluctuating market and do not pass on the benefit of decrease in prices to end consumers.

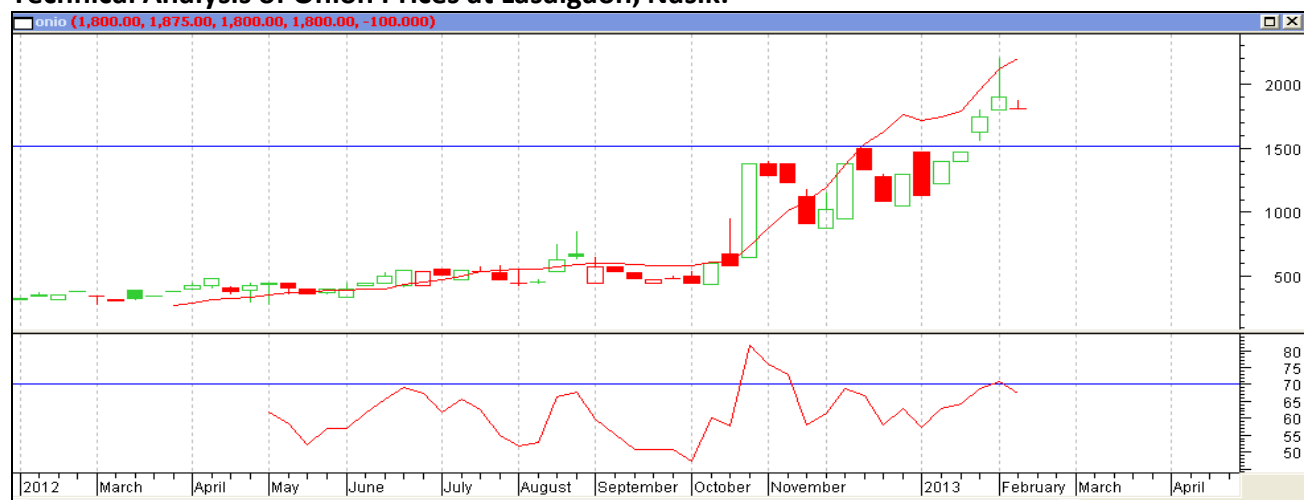
## Onion arrivals (Qtls) in major cities of India markets:

| Center Name  | Total Arrivals<br>(4th Feb-<br>9th Feb) | Total Arrivals<br>(28th Jan-<br>2nd Feb) | % Change in<br>arrivals over<br>prev. week |
|--------------|---|--|--|
| AHMEDABAD    | 36460                                   | 34590                                    | 5.41                                       |
| BANGALORE    | 41700                                   | 38550                                    | 8.17                                       |
| BHUBANESHWAR | 9500                                    | 11000                                    | -13.64                                     |
| CHENNAI      | 30000                                   | 32700                                    | -8.26                                      |
| DELHI        | 35300                                   | 68150                                    | -48.20                                     |
| JAIPUR       | 18990                                   | 13340                                    | 42.35                                      |
| KOLKATA      | 67910                                   | 85140                                    | -20.24                                     |
| MUMBAI       | 66100                                   | 71300                                    | -7.29                                      |
| PATNA        | 7750                                    | 2550                                     | 203.92                                     |

(Source: NHB)

The above table shows the total arrivals during last two weeks in major cities. Arrivals are less in most of the cities except Jaipur, Patna, Ahmedabad and Bangalore. Arrivals in Ahmedabad and Jaipur are higher because of supply from local regions of the same state.

## Technical Analysis of Onion Prices at Lasalgaon, Nasik:



(Note: Each bar or "candle" in the chart shows the price movement in a particular week. The green candle signifies prices increased and red candle signifies prices decreased in that week. The length of the "candle" shows the upper and lower end of the price range for the week.)

The above chart shows the weekly price movement of onion in the benchmark of Lasalgaon mandi of Nasik. This week prices found resistance near 1950 level and closed near previous week low, indicating weakness could come in coming weeks. The Relative Strength Index (RSI) is also sloping downward from overbought zone, suggesting prices should come down. If prices fall, it should find support near 1500 level which was acting as strong resistance earlier.

### Disclaimer

The information contained in this document has been compiled by Agriwatch from sources believed to be reliable, such as NHB, Agmarknet, etc. and directly from traders in mandis. However, users of this data are requested to use the information with due caution and crosscheck with other sources. This document is not, and should not be construed as an offer to sell or buy any commodities. This document may not be reproduced, distributed or published without the express consent of SFAC