

Potato Fundamentals:

- In MCX, March contract prices have increased and settled at Rs. 862/Qtl. The prices were increased by Rs. 20/Qtl from its previous close of Rs. 842.
- In Tarkeshwar and Burdwan market of West Bengal, prices of potatoes have fallen down by Rs 50 to Rs 100/ quintal as of increase in arrivals from local region.
- In Farrukhabad (U.P), arrivals have increased almost by 25% in last few days because of which prices have declined to Rs 470/ quintal from Rs 516/ quintal.
- In Western India, lowest prices are in Rajkot at Rs 800/ quintal followed by Indore at Rs 1050/ quintal. Whereas in other parts of West India prices are above Rs 1300/ quintal.

Potato Wholesale Prices & Arrivals trend in Consumption Centers



(Source: AGRIWATCH)

Potato Prices & Arrivals in major Mandi as on 2/02/2013

Mandi	Ludhiana	Khandauli	Farrukhabad	Kanpur	Indore	Ahmedabad	Bangalore
Price (in Qtl)	480-560	700-800	441-481	500-650	500-1100	600-830	1000-1500
Arrivals (in Qtl)	2000	4500	35000	30000	11500	6387	6000

Potato Prices & Arrivals in major Mandi as on 1/02/2013

Mandi	Ludhiana	Khandauli	Farrukhabad	Kanpur	Indore	Ahmedabad	Bangalore
Price (in Qtl)	440-520	700-800	451-501	500-700	500-1100	550-850	1000-1600
Arrivals (in Qtl)	2000	8000	22500	30000	7500	5172	6500

(Source: Agriwatch)



SFAC
लघु कृषक
कृषि व्यवहार संघ

Small Farmers'
Agribusiness
Consortium



AGRIWATCH

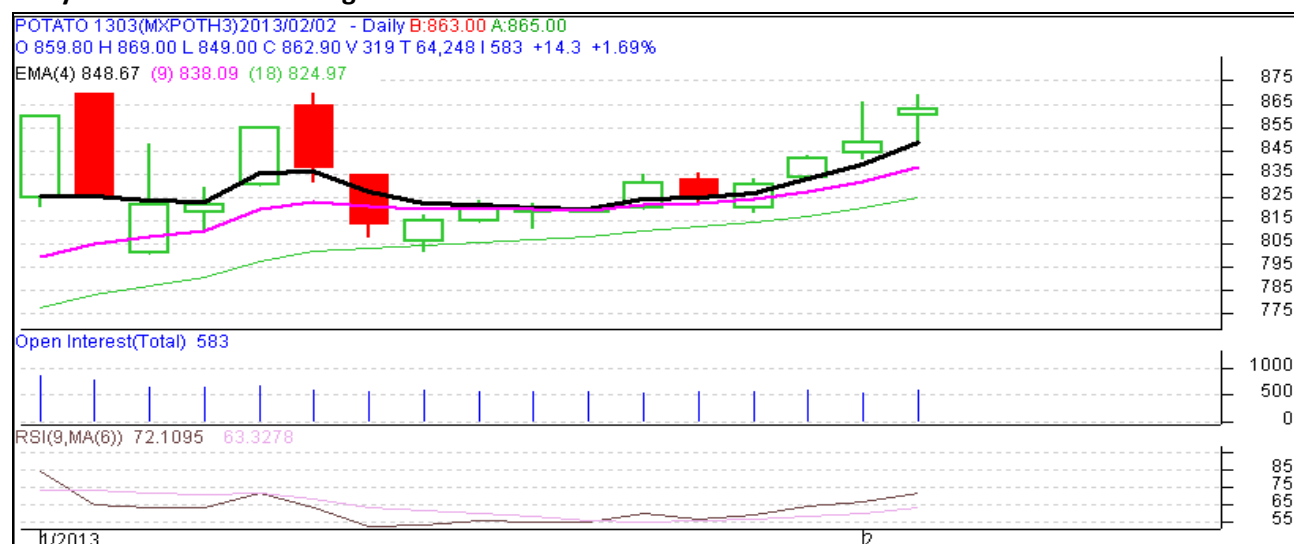
MCX- Potato Futures Analysis: (as on 2nd Feb 2013)

Symbol	Exchange	Expiry Date	Today's Close Price	Previous Close Price	Net Change	Today's Open Interest	Previous Day Open Interest	Change
POTATO	MCX	15-Mar-13	862.9	842.5	20.40	17490	16140	1350
POTATO	MCX	15-Apr-13	865.8	841	24.80	10530	9990	540
POTATO	MCX	15-May-12	873.9	840	33.90	19350	18690	660
				Total				2550

(Source: MCX)

In MCX, Future contracts, Prices and open interest have increased which suggest that market participants are taking buy positions in anticipation of higher price in coming days.

Daily Price Chart of MCX- Agra March Contract:



(Source: AGRIWATCH RESEARCH)

The above graph shows the daily price movement of MCX, March contract. Prices are trading above their moving average which suggests firmness in market. On the higher side, prices find a resistance at a level of Rs 875. On the lower side, prices found a support at a level of Rs 840.

Potato Prices in major markets – Wholesale vs. Retail as on 2nd February 2013

Centre	Wholesale Prices (Rs/ qtl)	Retail Price (Rs/ kg)	Centre	Wholesale Prices (Rs/ qtl)	Retail Price (Rs/ kg)
NORTH ZONE			EAST ZONE		
CHANDIGARH	1100	13	PATNA	NR	NR
DELHI	700	13	BHAGALPUR	800	9
HISAR	800	9	RANCHI	NR	NR
KARNAL	850	10	BHUBANESHWAR	NR	NR
SHIMLA	600	10	CUTTACK	NR	NR
MANDI	600	8	SAMBALPUR	NR	NR
SRINAGAR	NR	NR	KOLKATA	700	10
JAMMU	NR	NR	SILIGURI	550	8
AMRITSAR	600	10	NORTH-EAST ZONE		
LUDHIANA	800	10	ITANAGAR	750	12
BATHINDA	600	11	GUWAHATI	NR	12
LUCKNOW	800	10	SHILLONG	1300	18
KANPUR	600	8	AIZWAL	NR	NR
VARANASI	900	10	DIMAPUR	1100	15
AGRA	600	8	AGARTALA	1100	16
DEHRADUN	600	10	SOUTH ZONE		
WEST ZONE			PORT BLAIR	2100	24
RAIPUR	1400	16	HYDERABAD	1600	18
PANAJI	NR	NR	VIJAYWADA	1633	18
AHMEDABAD	1300	18	BENGALURU	2000	22
RAJKOT	800	10	DHARWAD	1975	21
BHOPAL	1300	15	T.PURAM	2500	27
INDORE	1050	15	ERNAKULAM	2400	25
GWALIOR	1600	20	KOZHIKODE	1800	24
JABALPUR	1300	15	PUDUCHERRY	1800	20
MUMBAI	1350	20	CHENNAI	1400	18
NAGPUR	1500	20	DINDIGUL	2300	25
JAIPUR	NR	NR	THIRUCHIRAPALLI	1800	19
JODHPUR	1000	15			
KOTA	NR	NR			

(Source: State Civil Supplies Dept)

Disclaimer

The information contained in this document has been compiled by Agriwatch from sources believed to be reliable, such as NHB, Agmarknet, etc. and directly from traders in mandis. However, users of this data are requested to use the information with due caution and crosscheck with other sources. This document is not, and should not be construed as an offer to sell or buy any commodities. This document may not be reproduced, distributed or published without the express consent of SFAC



SFAC
लघु कृषक
कृषि व्यवहार संघ

Small Farmers'
Agribusiness
Consortium



AGRIWATCH