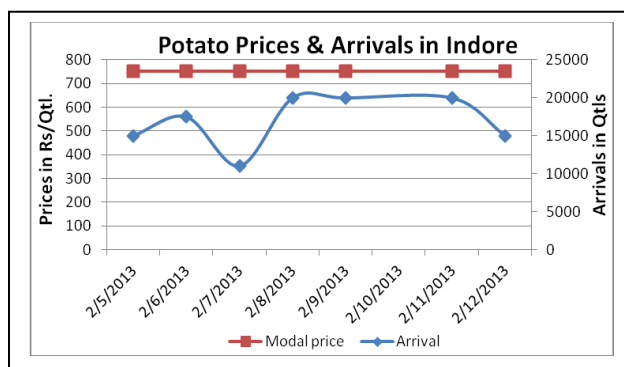
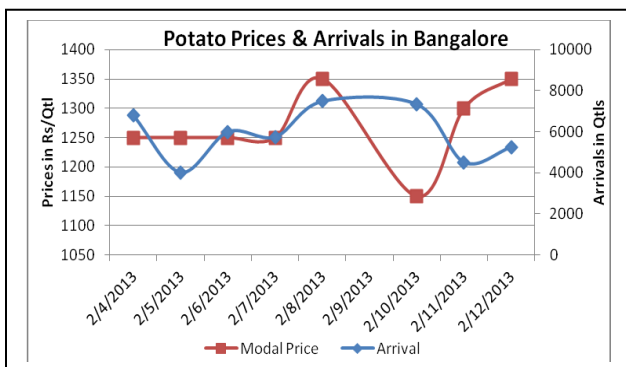
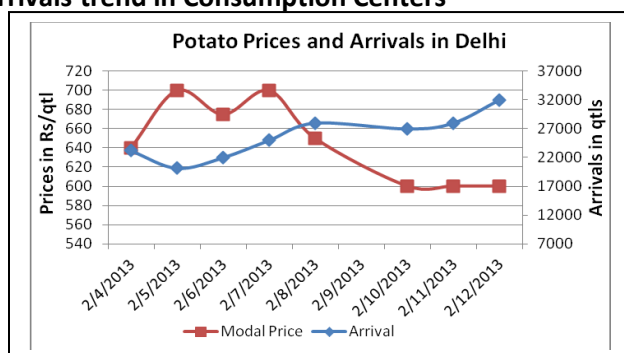
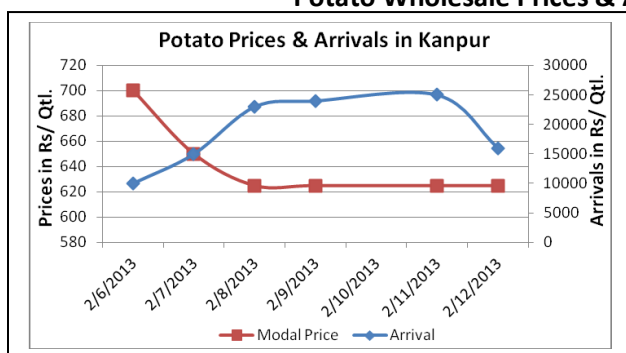


Potato Fundamentals:

- In West Bengal, hybrid potato 'Pukhraj' is arriving in market. According to trade sources, demand is mainly coming from A.P, Bihar and Jharkhand.
- According to trade sources in West Bengal, potato cold storages are expected to open after two weeks.
- In Sitamari (Bihar), potatoes are coming from U.P region and local region which are contributing approximately 25% and 75% to the total arrivals. Prices are hovering in the range of Rs 550 to Rs 650/ quintal.
- In North East India, prices of potatoes in retail market are hovering in the range of Rs 900 to Rs 1800/ quintal. Maximum prices are in Shillong at Rs 1800/ quintal and lowest prices are in Guwahati at Rs 900/ quintal.
- Futures markets are stable and fluctuating in the range of Rs. 10-15/ qtl on daily basis. March Potato futures yesterday closed at Rs. 828/Qtl.

Potato Wholesale Prices & Arrivals trend in Consumption Centers



(Source: AGRIWATCH)

Potato Prices & Arrivals in major Mandi as on 12/02/2013

Mandi	Ludhiana	Khandauli	Farrukhabad	Kanpur	Indore	Ahmedabad	Bangalore
Price (in Qtl)	440-480	700-800	430-560	550-700	500-1000	500-2000	1200-1500
Arrivals (in Qtl)	4000	8000	20000	16000	15000	4972	5250

Potato Prices & Arrivals in major Mandi as on 11/02/2013

Mandi	Ludhiana	Khandauli	Farrukhabad	Kanpur	Indore	Ahmedabad	Bangalore
Price (in Qtl)	440-480	700-800	425-545	550-700	500-1000	550-700	1100-1500
Arrivals (in Qtl)	6500	10000	24000	25000	20000	8734	4500

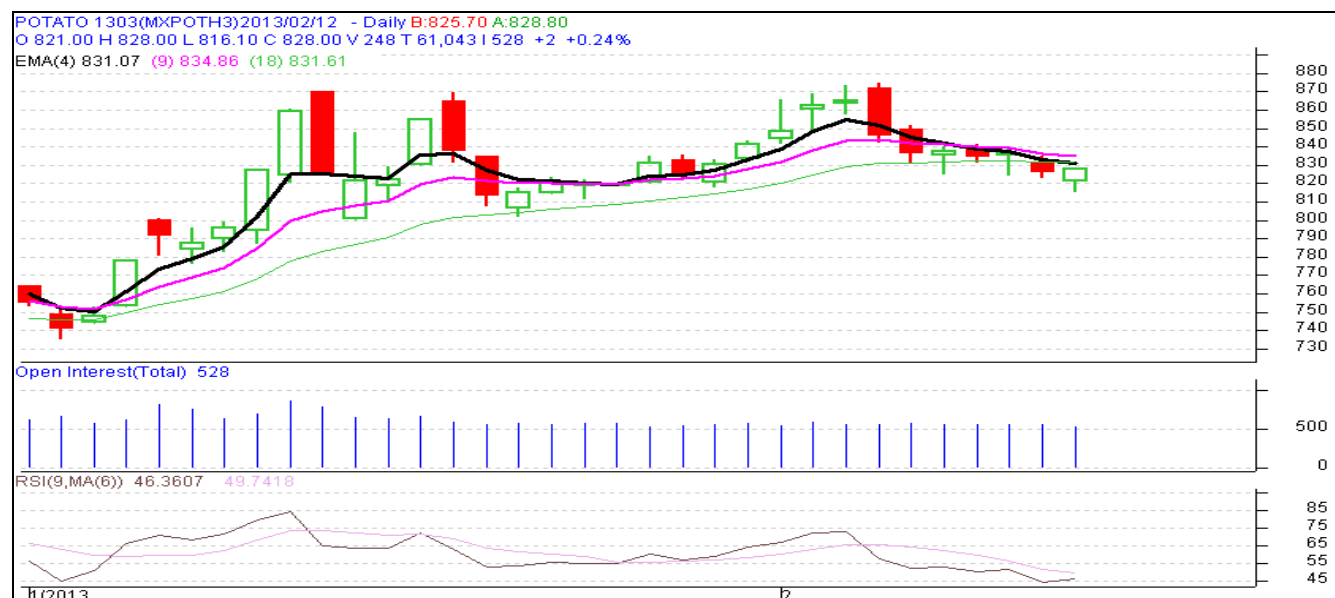
(Source: Agriwatch)

MCX- Potato Futures Analysis: (as on 12th Feb 2013)

Symbol	Exchange	Expiry Date	Today's Close Price	Previous Close Price	Net Change	Today's Open Interest	Previous Day Open Interest	Change
POTATO	MCX	15-Mar-13	828	826	2.00	15840	16560	-720
POTATO	MCX	15-Apr-13	819.9	814.1	5.80	9540	9660	-120
POTATO	MCX	15-May-12	821.4	817.6	3.80	24390	21540	2850
				Total				2010

(Source: MCX)

Daily Price Chart of MCX- Agra March Contract:



(Source: AGRIWATCH RESEARCH)

The above graph shows the daily price movement of MCX, March contract. Prices trading below its 4-day, 9-day and 18 day exponential moving average which indicates bearishness in market. Moving averages are also sloping downward and short term moving average has cut the long-term moving average from above. The indicates short-term down trend in the market. On the higher side prices may find resistance at a level of 850. On lower side prices may found support at a level of Rs 810.

Potato Prices in major markets – Wholesale vs. Retail as on 12th February 2013

Centre	Wholesale Prices (Rs/ qtl)	Retail Price (Rs/ kg)	Centre	Wholesale Prices (Rs/ qtl)	Retail Price (Rs/ kg)
NORTH ZONE			EAST ZONE		
CHANDIGARH	1100	13	PATNA	NR	NR
DELHI	650	12	BHAGALPUR	700	NR
HISAR	800	9	RANCHI	NR	NR
KARNAL	900	11	BHUBANESHWAR	660	9
SHIMLA	600	10	CUTTACK	680	10
MANDI	600	8	SAMBALPUR	660	10
SRINAGAR	NR	NR	KOLKATA	700	9
JAMMU	800	14	SILIGURI	550	8
AMRITSAR	700	11	NORTH-EAST ZONE		
LUDHIANA	800	10	ITANAGAR	750	12
BATHINDA	600	13	GUWAHATI	NR	9
LUCKNOW	800	10	SHILLONG	1300	18
KANPUR	600	8	AIZWAL	NR	NR
VARANASI	900	10	DIMAPUR	1050	15
AGRA	600	8	AGARTALA	1050	14
DEHRADUN	700	11	SOUTH ZONE		
WEST ZONE			PORT BLAIR	1800	20
RAIPUR	1400	16	HYDERABAD	1600	18
PANAJI	NR	NR	VIJAYWADA	1583	18
AHMEDABAD	1300	18	BENGALURU	1900	21
RAJKOT	725	9	DHARWAD	2250	24
BHOPAL	1300	15	T.PURAM	2500	27
INDORE	1000	15	ERNAKULAM	2400	25
GWALIOR	1600	20	KOZHIKODE	1800	24
JABALPUR	800	10	PUDUCHERRY	1700	20
MUMBAI	1150	18	CHENNAI	1400	18
NAGPUR	1400	17	DINDIGUL	NR	NR
JAIPUR	500	10	THIRUCHIRAPALLI	1700	18
JODHPUR	800	10			
KOTA	NR	NR			

(Source: State Civil Supplies Dept)

Disclaimer

The information contained in this document has been compiled by Agriwatch from sources believed to be reliable, such as NHB, Agmarknet, etc. and directly from traders in mandis. However, users of this data are requested to use the information with due caution and crosscheck with other sources. This document is not, and should not be construed as an offer to sell or buy any commodities. This document may not be reproduced, distributed or published without the express consent of SFAC