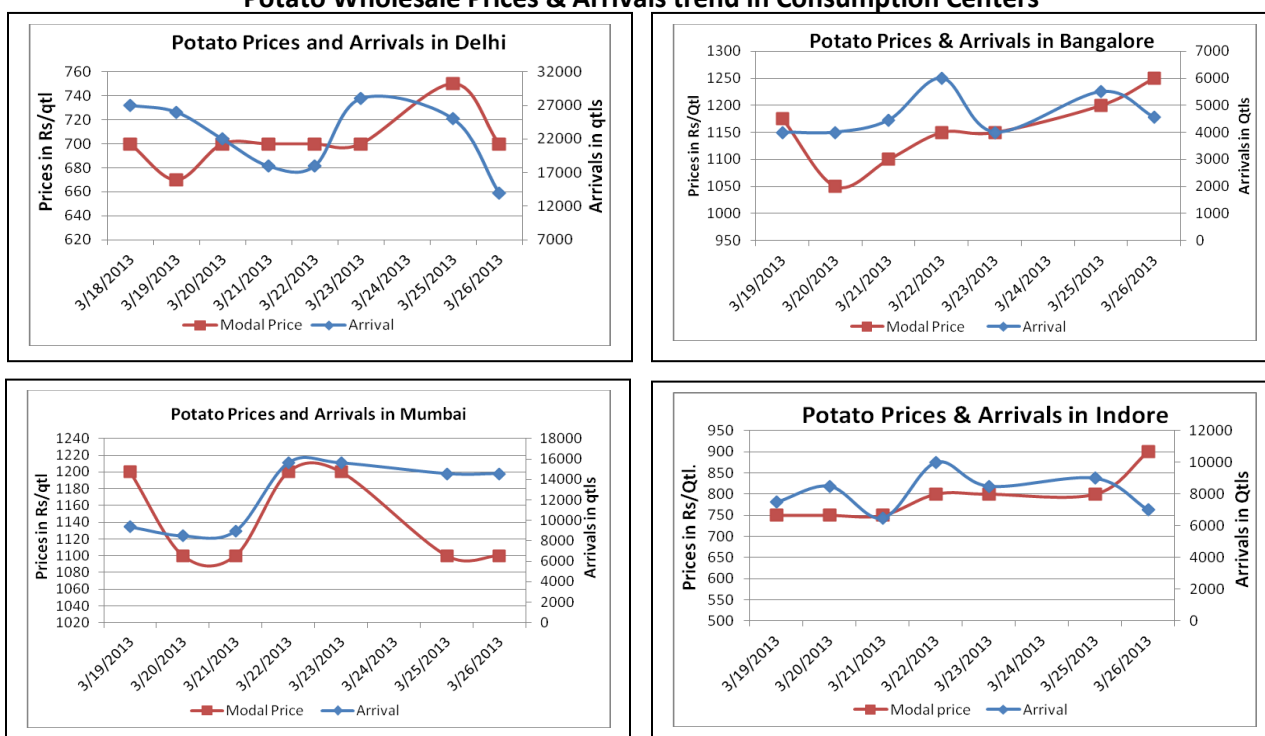


Potato Fundamentals:

- Farmers have produced 600 quintals of potatoes this year with the assistance of state government. Chipsona and Lady Rosetta variety of onion was grown in Cuttack, Banki and Keonjhar .These varieties can produce 25 times of potatoes as compared to the seeds sown. Normal varieties produce 10 times of the seeds
- In Chandausi, Farrukhabad and Khandauli region of U.P, cold storages are already filled by 25%, 40% and 60% respectively of total storage capacity.
- In North East part of India, maximum retail prices were seen in Aizwal and Shillong at Rs 3000/quintal followed by Guwahati and Dimapur at Rs 1800 and Rs 1400/ quintal.

Potato Wholesale Prices & Arrivals trend in Consumption Centers



(Source: AGRIWATCH)

Potato Prices & Arrivals in major Mandi as on 26.3.2013

Mandis	Burdwan(W.B)	Khandauli	Farrukhabad	Kanpur	Indore	Tarkeshwar(W.B)	Bangalore
Price (Rs./Qt)	440-480	700-800	480-500	650-750	700-1100	510-530	1000-1500
Arrivals (Qtl)	-	50000	2000	12000	7000	-	4550

Potato Prices & Arrivals in major Mandi as on 25.3.2013

Mandis	Burdwan(W.B)	Khandauli	Farrukhabad	Kanpur	Indore	Tarkeshwar(W.B)	Bangalore
Price (Rs./Qt)	470-500	780-800	475-485	650-750	500-1100	510-550	900-1500
Arrivals (Qtl)	-	50000	16000	21000	9000	-	5500

(Source: Agriwatch)

MCX- Potato Futures Analysis: (as on 26th March 2013)

Symbol	Exchange	Expiry Date	Today's Close Price	Previous Close Price	Net Change	Today's Open Interest	Previous Day Open Interest	Change
POTATO	MCX	15-Apr-13	941.2	922	19.2	7680	7590	90
POTATO	MCX	15-May-12	941.5	922	19.5	18060	21060	-3000
POTATO	MCX	16-Jun-12	943	921	22	10860	10740	120
				Total				-2790

(Source: MCX)

In MCX, May contract prices have increased and open interest have fallen which indicates that market participants are short covering their positions and may be expecting further increase. In MCX, April and June contract market participants are taking long build up positions.

Daily Price Chart of MCX- Agra April Contract:



(Source: AGRIWATCH RESEARCH)

Potato may contract is facing resistance at 950 levels and down side support for the contract is placed at 910 levels. Prices are moving above its 4 day, 9 day and 18 day exponential moving averages which suggest firmness in market. If the level of Rs. 950 is breached than it might go further up in short term.

Potato Prices in major markets – Wholesale vs. Retail as on 26th March 2013

Centre	Wholesale Prices (Rs/ qtl)	Retail Price (Rs/ kg)	Centre	Wholesale Prices (Rs/ qtl)	Retail Price (Rs/ kg)
NORTH ZONE			EAST ZONE		
CHANDIGARH	700	10	PATNA	600	8
DELHI	738	13	BHAGALPUR	700	9
HISAR	800	9	RANCHI	NR	NR
KARNAL	850	10	BHUBANESHWAR	600	8
SHIMLA	600	11	CUTTACK	650	8
MANDI	NR	NR	SAMBALPUR	680	10
SRINAGAR	NR	20	ROURKELA	600	8
JAMMU	700	15	KOLKATA	500	7
AMRITSAR	900	13	SILIGURI		
LUDHIANA	NR	NR	NORTH-EAST ZONE	NR	NR
BATHINDA	300	7	ITANAGAR	NR	8
LUCKNOW	NR	NR	GUWAHATI	1300	18
KANPUR	NR	NR	SHILLONG	2200	30
VARANASI	NR	NR	AIZWAL	2800	30
AGRA	NR	NR	DIMAPUR	900	14
DEHRADUN	NR	NR	AGARTALA	0	0
WEST ZONE			SOUTH ZONE		
RAIPUR	NR	NR	PORT BLAIR	NR	NR
PANAJI	NR	NR	HYDERABAD	1300	14
AHMEDABAD	1100	15	VIJAYWADA	1533	15
RAJKOT	1025	13	VISAKHAPATNAM	1767	12
BHOPAL	1300	15	BENGALURU	1600	18
INDORE	950	14	DHARWAD	1900	23
GWALIOR	NR	NR	T.PURAM	3900	23
JABALPUR	600	8	ERNAKULAM	3600	23
MUMBAI	950	20	KOZHIKODE	3600	21
NAGPUR	1017	13	PUDUCHERRY	1600	20
JAIPUR	NR	NR	CHENNAI	1200	15
JODHPUR	NR	NR	DINDIGUL	NR	NR
KOTA	NR	NR	THIRUCHIRAPALLI	1300	17

(Source: State Civil Supplies Dept)

Disclaimer

The information contained in this document has been compiled by Agriwatch from sources believed to be reliable, such as NHB, Agmarknet, etc. and directly from traders in mandis. However, users of this data are requested to use the information with due caution and crosscheck with other sources. This document is not, and should not be construed as an offer to sell or buy any commodities. This document may not be reproduced, distributed or published without the express consent of SFAC