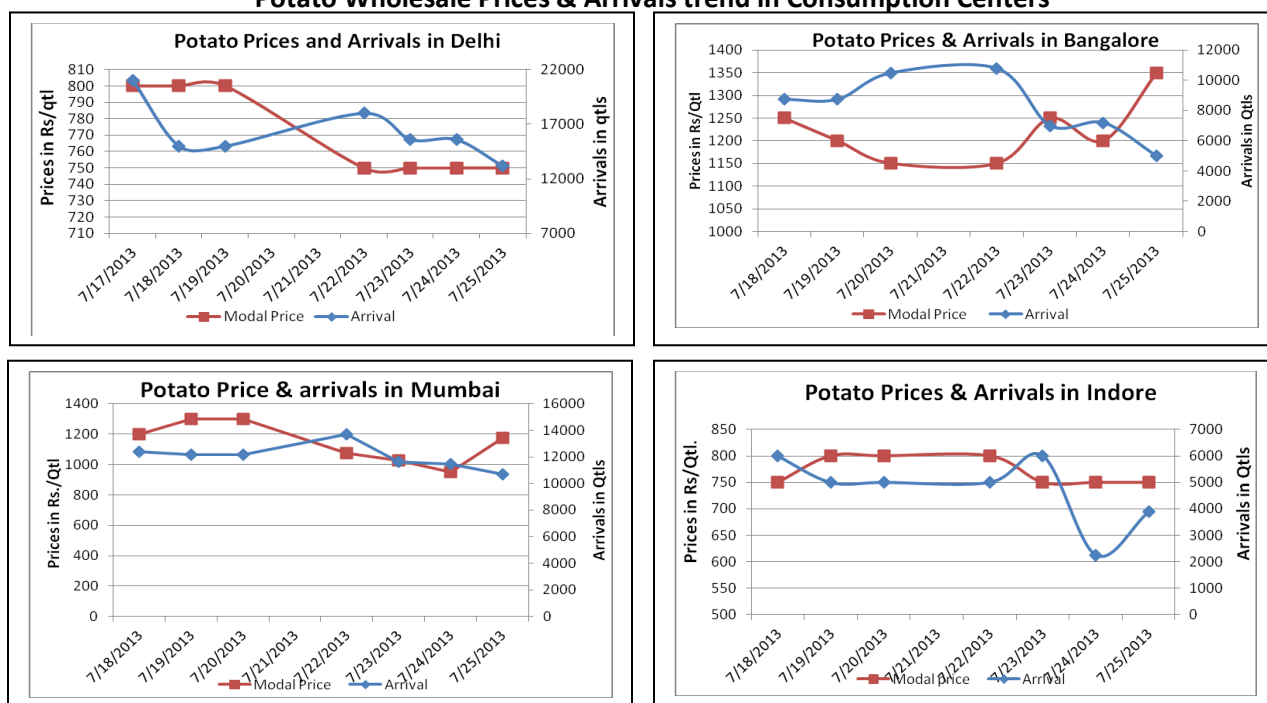


## Potato Fundamentals:

- In **Khandauli (Agra)**, approximately 15-20% of potatoes are released from the cold storages compared to previous year release of approximately 30% during same time
- In **Bihar**, 10% of potatoes are released from the cold storages compared to previous year 25% release during same time last year.
- According to trade sources in samastipur (Bihar), release from cold storages have declined to 60-70% compared to previous year during same time.
- According to trade sources, crop from **Hassan (Karnataka)** is expected to arrive in market in a couple of weeks. It is expected that potato crop is in good condition compared to previous two year as monsoon and rains were on time.

## Potato Wholesale Prices & Arrivals trend in Consumption Centers



(Source: AGRIWATCH)

## Potato Prices & Arrivals in major Mandis as on 25.7.2013

Mandis	Burdwan(W.B)	Khandauli	Farrukhabad	Kanpur	Indore	Tarkeshwar(W.B)	Bangalore
Price (Rs./Qtl)	720	700-800	700-750	500-800	500-1000	780	1300-1400
Arrivals (Qtl)	-	22500	3750	11250	3900	-	5000

## Potato Prices & Arrivals in major Mandis as on 24.7.2013

Mandis	Burdwan(W.B)	Khandauli	Farrukhabad	Kanpur	Indore	Tarkeshwar(W.B)	Bangalore
Price (Rs./Qtl)	720	700-800	700-750	500-850	500-1000	770	1100-1300
Arrivals (Qtl)	-	50000	4500	10500	2250	-	7200

(Source: Agriwatch)

## Potato Futures Analysis: (as on 25th July 2013)

Symbol	Exchange	Expiry Date	Today's Close Price	Previous Close Price	Net Change	Today's Open Interest	Previous Day Open Interest	Change
POTATO	MCX	14-Aug-13	706.8	710	-3.2	12090	10350	1740
POTATO	MCX	14-Sep-13	657.2	660	-2.8	20700	16500	4200
POTATO	NCDEX	20-Aug-13	666.00	662.00	4	850	980	-130
POTATO	NCDEX	20-Sep-13	640.00	648.00	-8	2060	2160	-100

(Source: MCX, NCDEX)

## Daily Price Chart of MCX- Agra August Contract:



(Source: Agriwatch)

Candlestick chart pattern reveals bearish trend in the market, however prices are trying to recover. RSI is moving up in oversold zone indicates prices may go up for short term. Prices closed below 9 and 18 days EMAs. Volumes are not supporting the prices in the market.

## Potato Prices in major markets – Wholesale vs. Retail as on 25 July 2013

Centre	Min. Price	Max Price	Modal Price	Retail Price
AGRA	700	900	800	1400
AMRITSAR	650	780	720	1500
BANGALORE	1200	1400	1300	1800
BARAUT	1000	1100	1050	1400
BHUBANESHWAR	800	900	850	1200
CHANDIGARH	1250	1500	1375	2000
CHENNAI	1600	1800	1700	2400
DELHI	700	2000	1350	2500
GANGATOK	1500	2000	1800	2000
GUWAHATI	940	1260	1100	1800
HYDERABAD	800	1200	1000	1500
INDORE	500	1000	750	1800
JAIPUR	800	900	855	1400
JAMMU	1000	11000	1050	1400
JAMMU	900	1000	950	1300
KOLKATA	800	820	810	1100
MUMBAI	8500	11000	9750	15000
MUMBAI	12500	15000	13750	20000
PATNA	750	850	800	1300
RAIPUR	900	1200	1100	1600
RANCHI	730	785	760	1000
SHIMLA	2000	2300	2200	2500
SRINAGAR	1300	1400	1350	1800

(Source: State Civil Supplies Dept)

### Disclaimer

The information contained in this document has been compiled by Agriwatch from sources believed to be reliable, such as NHB, Agmarknet, etc. and directly from traders in mandis. However, users of this data are requested to use the information with due caution and crosscheck with other sources. This document is not, and should not be construed as an offer to sell or buy any commodities. This document may not be reproduced, distributed or published without the express consent of SFAC