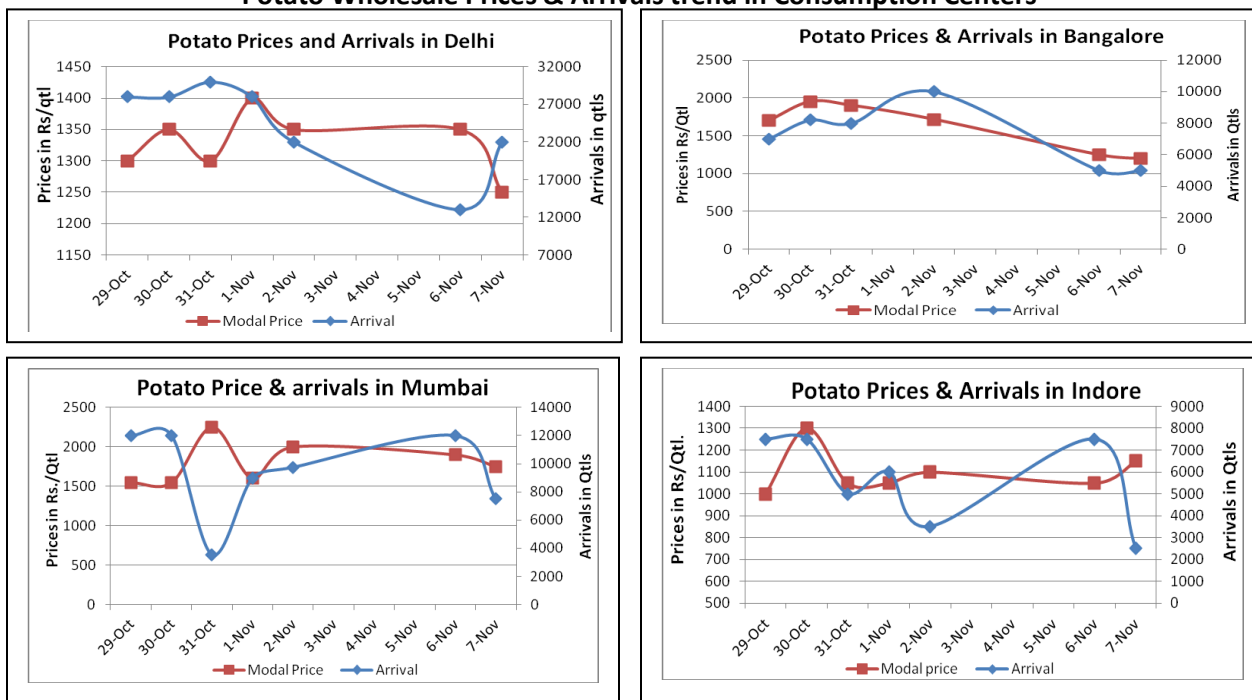


Potato Fundamentals:

- In **West Bengal**, approximately 23.5% of cold storage potatoes are remaining from which 7% is kept for sowing which is in progress. State government has banned the export of potato to other States which may bring down the potato prices in coming days.
- In **West Bengal**, State government has put a cap on potato prices which are currently trading at Rs 1340/ quintal.
- In **Bangalore**, 80% of potatoes are arriving in market from U.P whereas rest 20% is arriving in market from local region.
- In **Delhi**, potato crop is arriving in market from U.P, M.P, Karnataka, Punjab and Shimla. In wholesale market Surya variety from U.P is able to fetch a maximum price of Rs 1025/ quintal among cold storages variety.

Potato Wholesale Prices & Arrivals trend in Consumption Centers



(Source: AGRIWATCH)

Potato Prices & Arrivals in major Mandis as on 7.10.2013

Mandis	Burdwan(W.B)	Khandauli	Farrukhabad	Kanpur	Indore	Tarkeshwar(W.B)	Bangalore
Price (Rs./Qtl)	1200	1500-1600	-	1400-1700	500-1800	1340	1100-1300
Arrivals (Qtl)	-	72000	-	10400	2500	-	5000

Potato Prices & Arrivals in major Mandis as on 6.10.2013

Mandis	Burdwan(W.B)	Khandauli	Farrukhabad	Kanpur	Indore	Tarkeshwar(W.B)	Bangalore
Price (Rs./Qtl)	1200	1500-1600	1300-1400	1500-1600	500-1600	1340	1200-1300
Arrivals (Qtl)	-	90000	-	7000	7500	-	5000

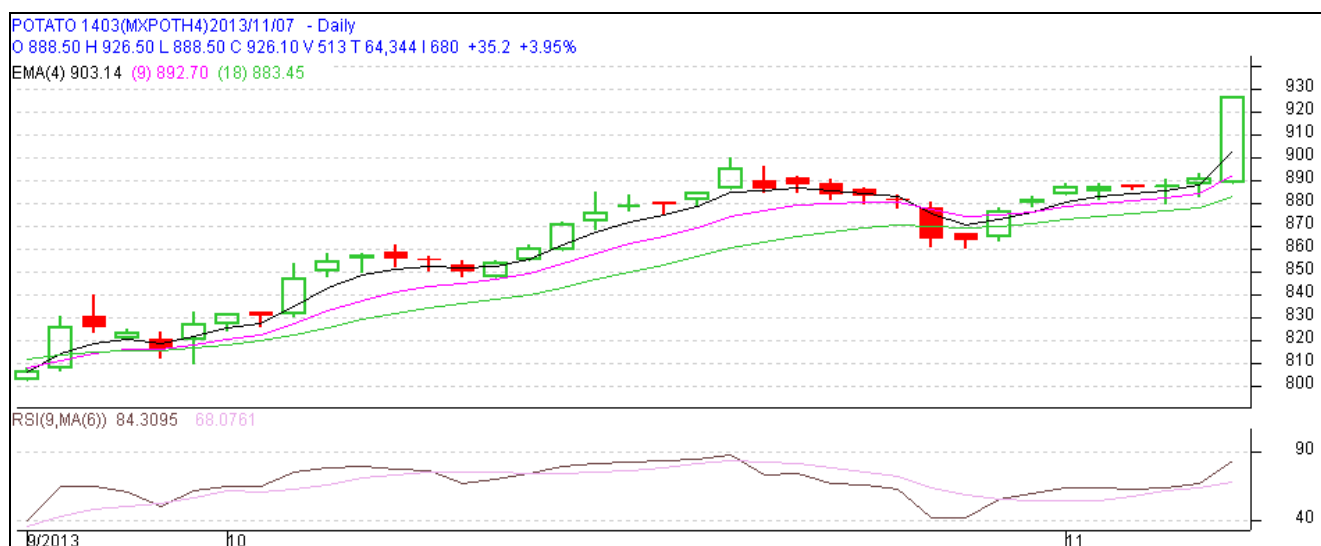
(Source: Agriwatch)

Potato Futures Analysis: (As on 7th October 2013)

	Exchange	Expiry Date	Today's Close Price	Previous Close Price	Net Change	Today's Open Interest	Previous Day Open Interest	Change
POTATO	MCX	31-Mar-14	926.10	890.90	35.2	10200	9075	1125
POTATO	MCX	30-Apr-14	892.30	858.00	34.3	3600	3480	120

(Source: MCX)

Daily Price Chart of MCX- Agra March Contract:



(Source: Agriwatch)

Candlestick chart pattern reveals bullish trend in the market, however prices may correct at higher levels. RSI is moving upward in overbought region indicates prices may go up further for short term. Prices closed above 9 and 18 days EMAs. Sudden rise in prices is due to higher prices in spot market. Market is expected to remain firm for next few days.

Potato Prices in major markets – Wholesale vs. Retail as on 7 November 2013

Centre	Min. Price	Max. Price	Modal Price	Retail Price
AHMEDABAD	1400	2100	1750	2300
AMRITSAR	775	950	900	2000
BARAUT	1600	1700	1650	2000
BHOPAL	1400	1600	1500	1800
BHUBANESHWAR	2200	2400	2300	3000
CHENNAI	2800	3500	3300	4200
DELHI	1000	3000	2000	3200
GANGATOK	1500	1800	1700	2500
GUWAHATI	1800	2000	1900	2400
INDORE	500	1800	1150	2500
JAIPUR	1200	1300	1260	2000
JAMMU	2700	2800	2750	3600
LUCKNOW	1250	1350	1300	2000
MUMBAI	1650	2000	1825	2500
PATNA	1700	1800	1750	2300
PUNE	1700	2000	1850	2500
RAIPUR	1600	2000	1800	2500
RANCHI	1600	2000	1800	2800
SHIMLA	2300	2400	2350	3000
SRINAGAR	1200	1500	1400	1800

(Source: State Civil Supplies Dept)

Disclaimer

The information contained in this document has been compiled by Agriwatch from sources believed to be reliable, such as NHB, Agmarknet, etc. and directly from traders in mandis. However, users of this data are requested to use the information with due caution and crosscheck with other sources. This document is not, and should not be construed as an offer to sell or buy any commodities. This document may not be reproduced, distributed or published without the express consent of SFAC