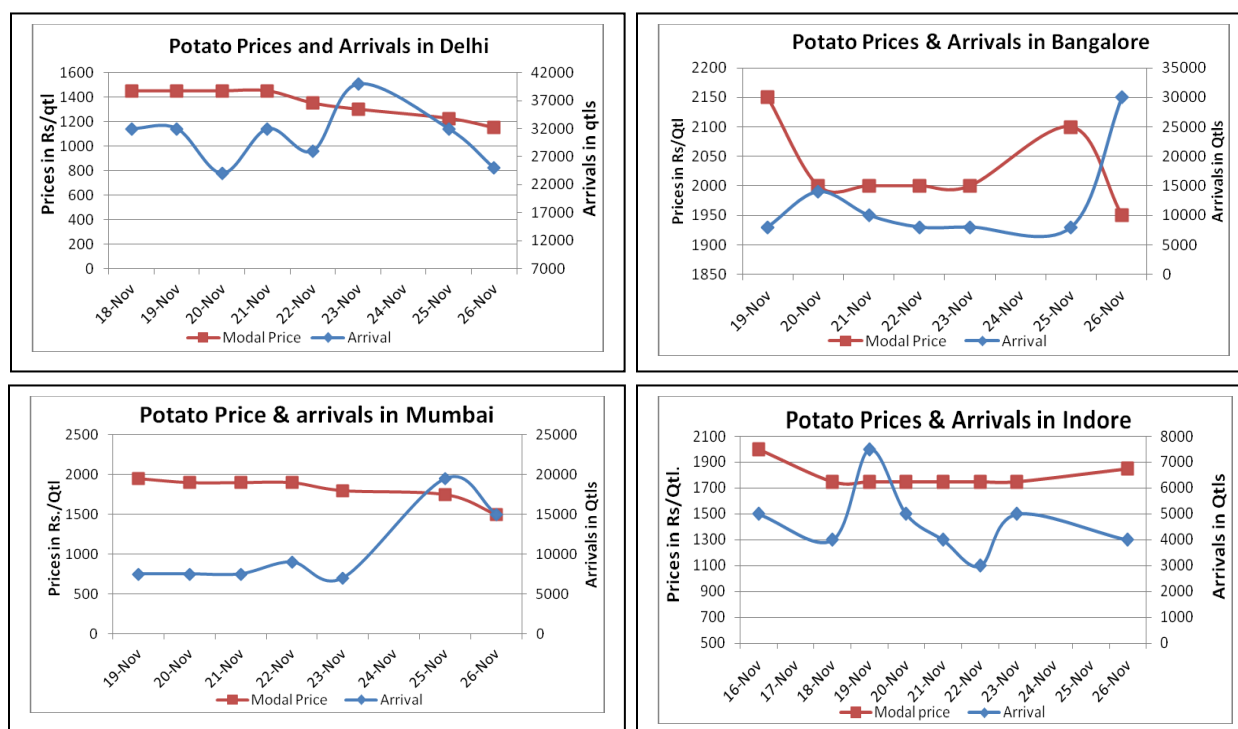


## Potato Fundamentals:

- According to news sources, Calcutta high court has suspended notification issued by West Bengal government restricting sale of potatoes out of the state.
- In **Khandauli (U.P)**, prices are hovering in the range of Rs 1400/ quintal- Rs 1500/ quintal from last few days. On a daily basis average arrival is approximately 80000 quintals.
- According to trade sources in **Bihar**, So far 40% of rabi crop sowing is completed. It is expected that crop area will be almost similar to last year because of high cost of seeds.
- In **Delhi**, fresh crop from Punjab is able to fetch a price of Rs 1100 to Rs 1400/ quintal. 'Chipsona' variety from U.P is able to fetch highest price of Rs 1400- Rs 1600/ quintal.
- In **West Bengal**, Tarkeshwar and Burdwan market prices are stable and continuously hovering in the range of Rs 1100/ quintal and Rs1030/ quintal

## Potato Wholesale Prices & Arrivals trend in Consumption Centers



(Source: AGRIWATCH)

## Potato Prices & Arrivals in major Mandis as on 26.11.2013

Mandis	Burdwan(W.B)	Khandauli	Farrukhabad	Kanpur	Indore	Tarkeshwar(W.B)	Bangalore
Price (Rs./Qtl)	1200	1400-1500	1200-1250	1200-1500	500-3200	1240	1700-2200
Arrivals (Qtl)	-	81000	400	47000	4000	-	30000

## Potato Prices & Arrivals in major Mandis as on 25.11.2013

Mandis	Burdwan(W.B)	Khandauli	Farrukhabad	Kanpur	Indore	Tarkeshwar(W.B)	Bangalore
Price (Rs./Qtl)	1030	1400-1500	1400	1000-1400	Closed	1050	2000-2200
Arrivals (Qtl)	-	90000	400	50000	Closed	-	8000

(Source: Agriwatch)

## Potato Futures Analysis: (As on 26<sup>th</sup> November 2013)

	Exchange	Expiry Date	Today's Close Price	Previous Close Price	Net Change	Today's Open Interest	Previous Day Open Interest	Change
POTATO	MCX	31-Mar-14	882.90	876.40	6.5	11265	10980	285
POTATO	MCX	30-Apr-14	862.70	856.00	6.7	5670	5700	-30

(Source: MCX)

## Daily Price Chart of MCX- Agra March Contract:



(Source: Agriwatch)

Candlestick chart pattern reveals indecision in the market, however prices may correct at higher levels. RSI is moving upward in neutral region indicates prices may go up further for short term. Prices closed below 9 and 18 days EMAs which suggest bearish market. Prices may remain in the range of Rs 870- Rs 890/ quintal for next couple of days.



**SFAC**  
लघु कृषक  
कृषि व्यापार संघ

Small Farmers'  
Agribusiness  
Consortium



**AGRIWATCH**

## Potato Prices in major markets – Wholesale vs. Retail as on 26 November 2013

Centre	Min. Price	Max. Price	Modal Price	Retail Price
AHMEDABAD	1300	2000	1650	2200
AMRITSAR	850	1300	1100	2000
BANGALORE	1600	1800	1700	2500
BARAUT	1700	1800	1750	2000
CHANDIGARH	750	875	813	2000
CHENNAI	2400	2600	2500	3600
DELHI	1240	1600	1420	2500
GANGATOK	1700	2000	1900	3000
GUWAHATI	1900	2100	2000	2400
INDORE	500	3200	1850	3000
JAIPUR	1000	1100	1055	1800
JAMMU	1400	1500	1450	2000
KOLKATA	1380	1420	1400	1300
LUCKNOW	1200	1400	1300	2000
MUMBAI	1500	2000	1750	3000
NASIK	1800	2200	2010	2400
PATNA	1700	2000	1850	2600
PUNE	1800	2300	2000	2800
RANCHI	1400	1800	1750	2200
SHIMLA	2000	2400	2200	3000
SRINAGAR	2000	2300	2200	2800
TRIVANDRUM	3300	4000	3700	4700

(Source: State Civil Supplies Dept)

### Disclaimer

The information contained in this document has been compiled by Agriwatch from sources believed to be reliable, such as NHB, Agmarknet, etc. and directly from traders in mandis. However, users of this data are requested to use the information with due caution and crosscheck with other sources. This document is not, and should not be construed as an offer to sell or buy any commodities. This document may not be reproduced, distributed or published without the express consent of SFAC