

## Executive Summary:

- In Khandauli (Agra), approximately 20-25% of Rabi sowing is completed and rest is expected to be complete by Diwali. According to trade sources, Rabi crop area is expected to be similar to last year's area.
- In West Bengal, sowing is expected to begin in the middle of November due to delay in harvest of Kharif crop. Usually potato sowing season begins by October-end or early November.
- In Begusarai (Bihar), sowing season has started and 10-15% sowing is completed. The rest of the area is expected to be covered by Diwali. According to trade sources, area is expected to be 10-20% lower as compared to previous year's area.
- In Uttar Pradesh, approximately 20% potatoes are left in cold storages whereas in West Bengal approximately 24% of potatoes are left as compared to previous year's 18% at the same time. Delay in sowing in West Bengal could impact prices in coming months.
- In Orissa, approximately 20% of potatoes are left in the cold storages which are expected to get over after Diwali. Prices of potatoes are hovering in the range of Rs 1150 to Rs1180/Qtl and prices of seeds are hovering in the range of Rs 900 to Rs 1000/Qtl.
- In Bangalore, potatoes are arriving from local regions and U.P which are contributing approximately 30% and 70% respectively to the total arrival. According to trade sources, approximately 85-90% of crop of Hassan region is already harvested.

## Monthly Wholesale Price Trend in different Producing & Consuming Centers:

Market	State	October 2012 Avg. Wholesale Price (Rs/Qtl)	September 2012 Avg. Wholesale Price (Rs/Qtl)	Absolute Change over Prev. Month (Rs./Qtl)	% Change over Prev. Month
Delhi	Delhi	905	1068	-163	-15.26
Agra	UP	892	1096	-204	-18.61
Hathras	UP	886	1032	-146	-14.15
Aligarh	UP	815	988	-173	-17.51
Farrukhabad	UP	993	1106	-113	-10.22
Kanpur	UP	943	1092	-149	-13.64
Ludhiana	Punjab	646	775	-129	-16.65
Kolkata	W Bengal	1130	1140	-10	-0.88
Hyderabad	A.P	1420	1505	-85	-5.65
Guwahati	Assam	1069	1700	-631	-37.12
Jaipur	Rajasthan	827	998	-171	-17.13
Mumbai	Maharashtra	1158	1353	-195	-14.41
Bangalore	Karnataka	1327	1325	2	0.15
Ahmedabad	Gujarat	1075	1173	-98	-8.35

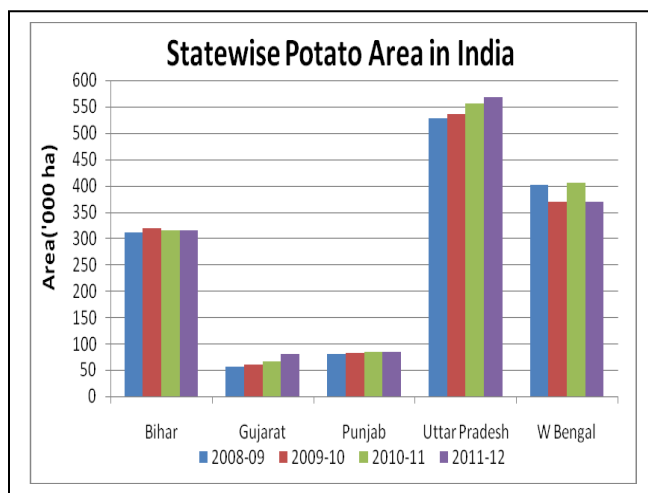
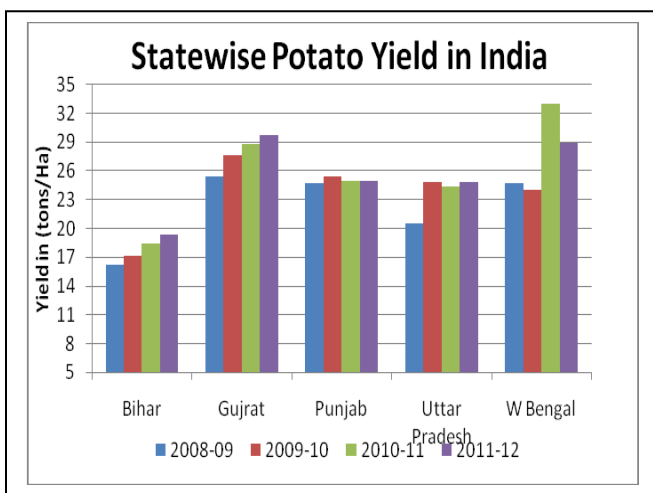
(Source: AGRIWATCH)

As evident from the table, potato prices have declined in almost all the markets except in Bangalore because of potato coming from U.P region as locally produced from Hassan is almost over. Fresh arrivals have started from Punjab which is able to fetch a price of Rs 900 to Rs 1000/ quintal. The other reason for decline in prices

is the higher availability of stocks in the cold storages as compared to previous year and arrivals of winter vegetables in market.

In Uttar Pradesh, West Bengal, Orissa and Haryana, 20%, 24%, 15-20% and 10-15% respectively of potatoes are respectively left in the cold storages. As the sowing season is in progress, the demand of seed potatoes is seen in the market irrespective of the prices.

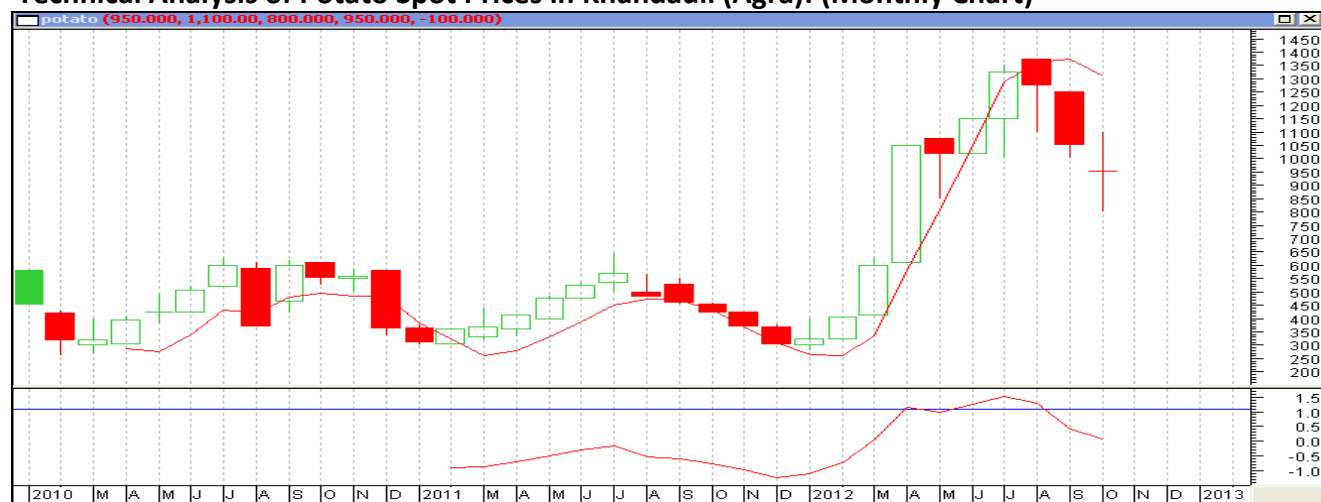
### Potato yield and Acreage of Major States:



(Source: NHRDF, Agriwatch Research)

The above graph shows the area and yield comparison of major potato growing states. Uttar Pradesh, West Bengal and Bihar are the top three states by area. In terms of yield, the top two states in 2011-12 were Gujarat and West Bengal. Punjab and Uttar Pradesh with almost identical yields are third. Bihar, which has similar agro-climatic profile as UP, can increase potato production by 30-35% if it matches the yields of U.P. However Bihar has shown continuous improvement in yield in the last 4 years which is encouraging.

### Technical Analysis of Potato Spot Prices in Khandauli (Agra): (Monthly Chart)



(Source: Agriwatch)

(Note: Each bar or "candle" in the chart shows the price movement in a particular month. The green candle signifies prices increased and red candle signifies prices decreased in that week. The length of the "candle" shows the upper and lower end of the price range for the week.)

The above chart shows the monthly spot price movement of potato in the benchmark Khandauli (Agra) market of U.P. In October, modal prices touched a high of Rs. 1100/Qtl, but could not sustain and fell back to

November, 2012

a low of Rs 800/Qtl before recovering to Rs 950 at the end of the month. Prices have breached the strong support level of Rs 1000. If prices trade below this level for a week, next support for prices would be Rs 800. On upper side, resistance could be found near Rs 1050 level. RSI is also downward which suggest potato prices will continue to remain subdued in November.

### Disclaimer

The information contained in this document has been compiled by Agriwatch from sources believed to be reliable, such as NHB, Agmarknet, etc. and directly from traders in mandis. However, users of this data are requested to use the information with due caution and crosscheck with other sources. This document is not, and should not be construed as an offer to sell or buy any commodities. This document may not be reproduced, distributed or published without the express consent of SFAC.