

Commodity: Chilli  
Contract: March

Exchange: NCDEX  
Expiry: March 20<sup>th</sup>, 2012

### CHILLI

#### Technical Commentary:

Candlestick chart trend reveals indecision in the market. RSI is moving range-bound in overbought region in the market indicates prices may correct in short term. Prices closed above 9 and 18 days EMAs indicates bullish sentiment in the market.



Strategy: Buy

Intraday Supports & Resistances			S2	S1	PCP	R1	R2
Chilli	NCDEX	Mar	6200	6260	6666	6850	6951
Intraday Trade Call			Call	Entry	T1	T2	SL
Chilli	NCDEX	Mar	Buy	Above 6612	6698	6741	6551

Do not carry forward the position until the next day

Commodity: Turmeric  
Contract: April

Exchange: NCDEX  
Expiry: April 19<sup>th</sup> 2012

### TURMERIC

#### Technical Commentary:

Candlestick chart trend reveals sideways trend in the market. RSI is moving up in neutral region in the market indicates prices may surge in short term. Volumes are supporting the prices in the market.



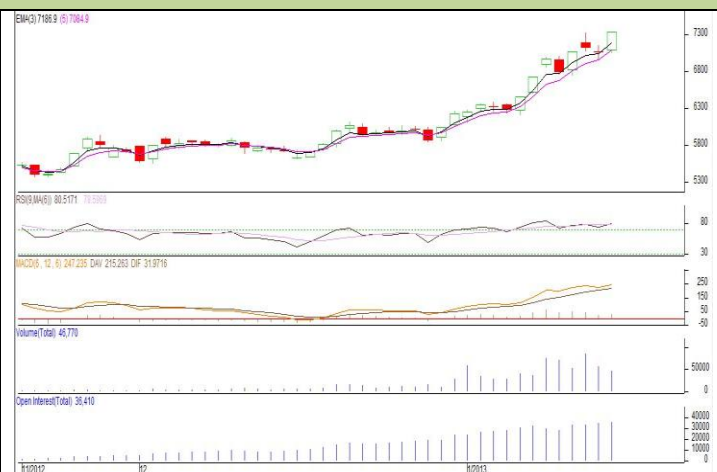
Strategy: Buy

Intraday Supports & Resistances			S2	S1	PCP	R1	R2
Turmeric	NCDEX	Apr	6268	6361	6638	7040	7060
Intraday Trade Call			Call	Entry	T1	T2	SL
Turmeric	NCDEX	Apr	Buy	Above 6600	6720	6780	6540

Do not carry forward the position until the next day.

**Commodity: Coriander**  
**Contract: April**
**Exchange: NCDEX**  
**Expiry: April 19<sup>th</sup>, 2012**
**CORIANDER**
**Technical Commentary:**

Candlestick formation reveals bullish sentiment in the market. RSI is moving up in neutral zone indicates prices may go up in short term. Prices closed above 9 days and 18 days EMAs in the market. Volumes are not supporting the prices in the market. We expect profit booking is likely to witness in market.


**Strategy: Buy**

			S2	S1	PCP	R1	R2
Coriander	NCDEX	Apr	6892	7120	7338	7601	7739
Intraday Trade Call			Call	Entry	T1	T2	SL
Coriander	NCDEX	Apr	Buy	Above 7300	7450	7525	7225

Do not carry forward the position until the next day

**Commodity: Jeera (Cumin Seed)**  
**Contract: March**
**Exchange: NCDEX**  
**Expiry: March 20<sup>th</sup>, 2012**
**JEERA**
**Technical Commentary:**

Candlestick chart formation reveals fresh buying interest in the market. RSI is moving up in neutral zone in the market indicates prices may go up in the market. Prices closed down between 9 days and 18 days EMAs indicates bearish movement in the market.


**Strategy: Buy on dips**

Intraday Supports & Resistances			S2	S1	PCP	R1	R2
Jeera	NCDEX	Mar	13450	13521	13645	14850	14880
Intraday Trade Call			Call	Entry	T1	T2	SL
Jeera	NCDEX	Mar	Buy	Above 13630	13761	13827	13551

Do not carry forward the position until the next day.

**Commodity: Black Pepper**  
**Contract: February**

**Exchange: NCDEX**  
**Expiry: February 20<sup>th</sup>, 2012**

### BLACK PEPPER

#### Technical Commentary:

Candlestick formation reveals bullish sentiment in the market. RSI is moving up in neutral zone indicates prices may go down in short term. Prices closed above 9 days and 18 days EMAs also indicates bullish sentiment in the market. Volumes are supporting the prices in the market.



Strategy: Buy

Intraday Supports & Resistances				S2	S1	PCP	R1	R2
Black Pepper	NCDEX	Feb		35721	35801	36030	36405	36551
Intraday Trade Call				Call	Entry	T1	T2	SL
Black Pepper	NCDEX	Feb		Buy	36020	36280	36410	35890

\*Do not carry forward the position until the next day

**Commodity: Cardamom**  
**Contract: February**

**Exchange: MCX**  
**Expiry: February 15<sup>th</sup>, 2012**

### CARDAMOM

#### Technical Commentary:

Candlestick formation reveals indecision sentiment in the market. RSI is moving down in neutral zone indicates prices may go down in the market. Prices closed below 9 days and 18 days EMAs also indicates bearish sentiment in the market. Volumes are supporting the prices in the market.



Strategy: Sell

				S2	S1	PCP	R1	R2
Cardamom	MCX	Feb		1001	1011	1031.60	1055	1065
Intraday Trade Call				Call	Entry	T1	T2	SL
Cardamom	MCX	Feb		Sell	Below 1033	1025	1021	1037

Do not carry forward the position until the next day



## Disclaimer

The information and opinions contained in the document have been compiled from sources believed to be reliable. The company does not warrant its accuracy, completeness and correctness. Use of data and information contained in this report is at your own risk. This document is not, and should not be construed as, an offer to sell or solicitation to buy any commodities. This document Jun not be reproduced, distributed or published, in whole or in part, by any recipient hereof for any purpose without prior permission from the Company. IASL and its affiliates and/or their officers, directors and employees Jun have positions in any commodities mentioned in this document (or in any related investment) and Jun from time to time add to or dispose of any such commodities (or investment). Please see the detailed disclaimer at <http://www.agriwatch.com/Disclaimer.asp>  
© 2005 Indian Agribusiness Systems Pvt Ltd.