

Commodity: Sugar  
Contract: May

Exchange: NCDEX  
Expiry: May 20<sup>th</sup>, 2013

## SUGAR



### Technical Commentary:

- Sugar prices are hovering in a downtrend as chart depicts.
- RSI is hovering between oversold and neutral region.
- Last candlestick depicts indecision in the market.

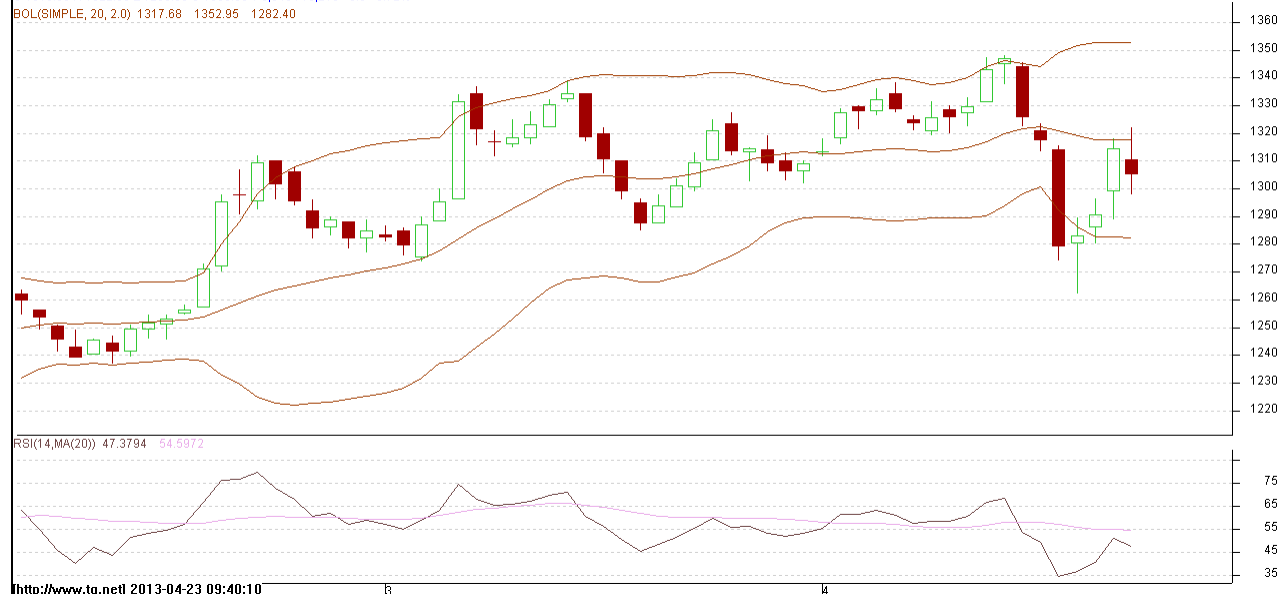
### Strategy: Sell

Intraday Supports & Resistances			S2	S1	PCP	R1	R2
Sugar	NCDEX	May	-	2860	2926	2968	3000
Intraday Trade Call			Call	Entry	T1	T2	SL
Sugar	NCDEX	May	<b>Sell</b>	Below 2930	2910	2900	2941

Do not carry forward the position until the next day.

**Commodity: Gur**  
**Contract: July**
**Exchange: NCDEX**  
**Expiry: July 20<sup>th</sup>, 2013**
**GUR**

SURCHMUZR 1307(NCCHMN3)2013/04/22 - Daily B:1297.50 A:1315.50  
 O 1310.50 H 1322.00 L 1298.00 C 1305.00 V 9,640 110,210 -9.5 -0.72%  
 BOL(SIMPLE, 20, 2.0) 1317.68 1352.95 1282.40


**Technical Commentary:**

- Gur prices still hovering in a range as chart depicts.
- RSI has moved down near to neutral region.
- Last candlestick depicts indecision in the market.

**Strategy: Buy**

Intraday Supports & Resistances			S2	S1	PCP	R1	R2
Gur	NCDEX	July	1260	1276	1305	1327.5	1334.5
Intraday Trade Call			Call	Entry	T1	T2	SL
Gur	NCDEX	July	Buy	Near 1303	1311	1315	1298

Do not carry forward the position until the next day.

**Disclaimer**

The information and opinions contained in the document have been compiled from sources believed to be reliable. The company does not warrant its accuracy, completeness and correctness. Use of data and information contained in this report is at your own risk. This document is not, and should not be construed as, an offer to sell or solicitation to buy any commodities. This document may not be reproduced, distributed or published, in whole or in part, by any recipient hereof for any purpose without prior permission from the Company. IASL and its affiliates and/or their officers, directors and employees may have positions in any commodities mentioned in this document (or in any related investment) and may from time to time add to or dispose of any such commodities (or investment). Please see the detailed disclaimer at <http://www.agriwatch.com/Disclaimer.asp>