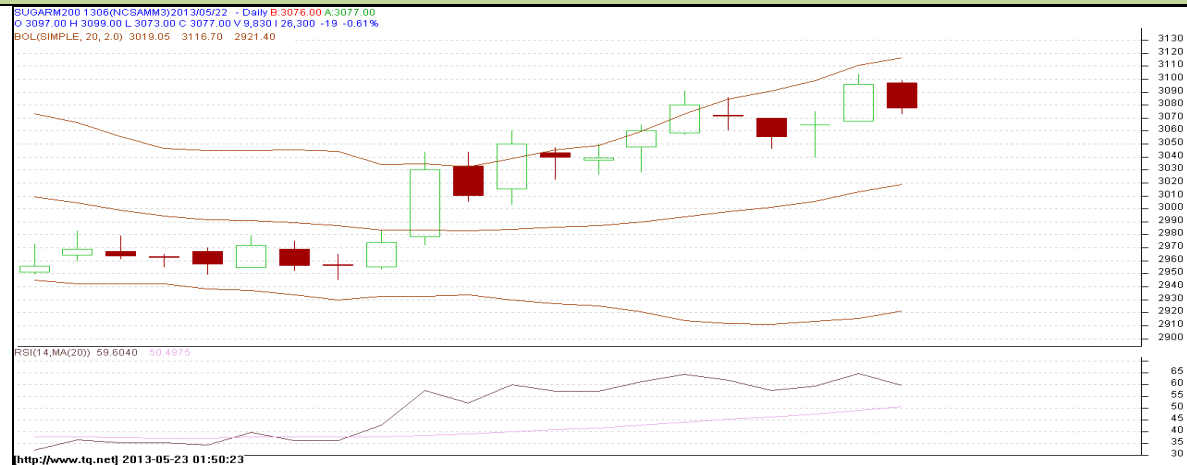


**Commodity: Sugar**  
**Contract: June**

**Exchange: NCDEX**  
**Expiry: June 20<sup>th</sup>, 2013**

## SUGAR



### Technical Commentary:

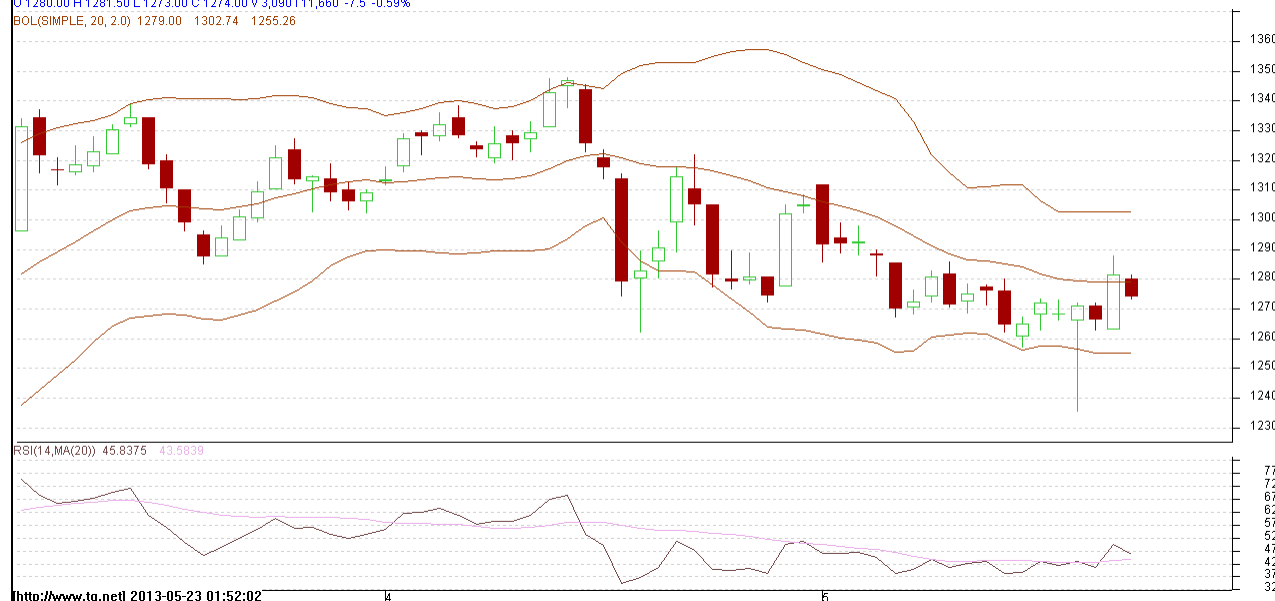
- Sugar prices are moving in an uptrend as chart depicts
- RSI is hovering near to oversold region.
- Decrease in prices has supported by OI which indicates short buildup occur in the market.
- Last candlestick depicts bearishness in the market.

### Strategy: Sell

Intraday Supports & Resistances			S2	S1	PCP	R1	R2
Sugar	NCDEX	June	3003	3035	3077	3140	3160
Intraday Trade Call			Call	Entry	T1	T2	SL
Sugar	NCDEX	June	<b>Sell</b>	Near 3079	3069	3064	3085

Do not carry forward the position until the next day.

**Commodity: Gur**  
**Contract: July**
**Exchange: NCDEX**  
**Expiry: July 20<sup>th</sup>, 2013**
**GUR**

 SURCHMUZR 1307(NCCHMN3)2013/05/22 - Daily B:1273.00 A:1274.00  
 O 1280.00 H 1281.50 L 1273.00 C 1274.00 V 3,090 I 11,660 -7.5 -0.59%  
 BOLL(SIMPLE, 20, 2.0) 1279.00 1302.74 1255.26

<http://www.tq.net> 2013-05-23 01:52:02

**Technical Commentary:**

- Gur prices hovering in a range with firm tone as chart depicts.
- RSI is hovering near to neutral region.
- Last candlestick depicts bearishness in the market.
- However, decrease in prices has not supported by OI.

**Strategy: Sell**

Intraday Supports & Resistances			S2	S1	PCP	R1	R2
Gur	NCDEX	July	1224	1260	1274	1327.5	1334.5
Intraday Trade Call			Call	Entry	T1	T2	SL
Gur	NCDEX	July	<b>Sell</b>	Near 1273	1269	1267	1275.5

Do not carry forward the position until the next day.

**Disclaimer**

The information and opinions contained in the document have been compiled from sources believed to be reliable. The company does not warrant its accuracy, completeness and correctness. Use of data and information contained in this report is at your own risk. This document is not, and should not be construed as, an offer to sell or solicitation to buy any commodities. This document may not be reproduced, distributed or published, in whole or in part, by any recipient hereof for any purpose without prior permission from the Company. IASL and its affiliates and/or their officers, directors and employees may have positions in any commodities mentioned in this document (or in any related investment) and may from time to time add to or dispose of any such commodities (or investment). Please see the detailed disclaimer at <http://www.agriwatch.com/Disclaimer.asp>