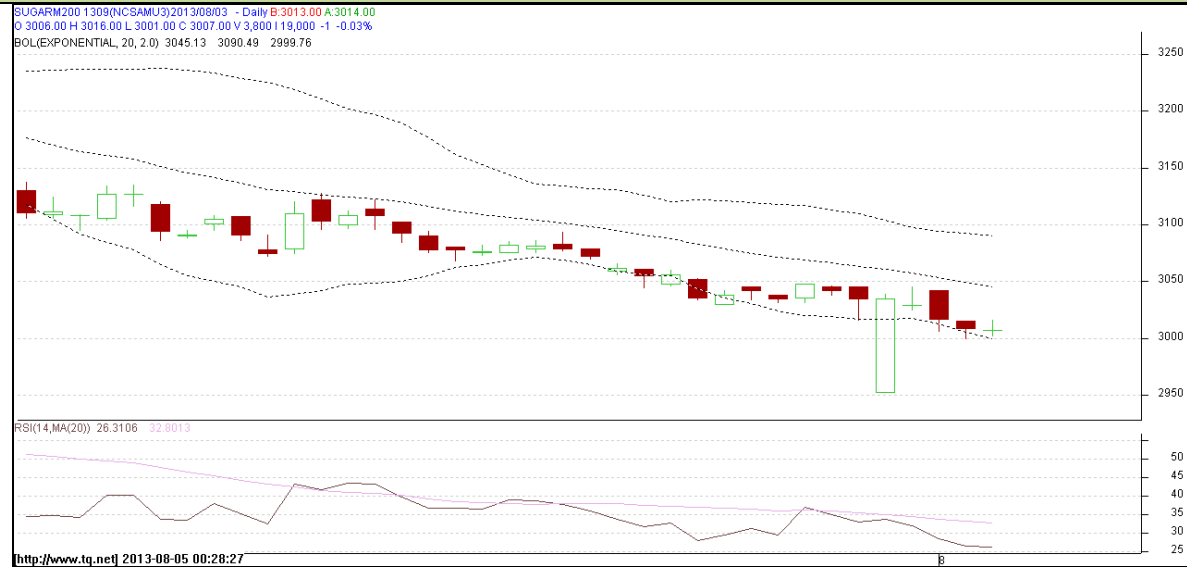


**Commodity: Sugar**  
**Contract: Sept**

**Exchange: NCDEX**  
**Expiry: 20<sup>th</sup> Sept, 2013**

## SUGAR



### Technical Commentary:

- Sugar prices are moving in a downtrend as chart depicts.
- However, RSI is hovering near to neutral region.
- Prices are hovering at oversold region.

### Strategy: Buy

Intraday Supports & Resistances			S2	S1	PCP	R1	R2
Sugar	NCDEX	Sept		2912	3007	3066	3110
Intraday Trade Call			Call	Entry	T1	T2	SL
Sugar	NCDEX	Sept	Buy	Above 3013	3023	3028	3007

Do not carry forward the position until the next day.

**Commodity: Gur**  
**Contract: September**
**Exchange: NCDEX**  
**Expiry: Sept 20<sup>th</sup>, 2013**
**GUR**

**Technical Commentary:**

- Gur prices are showing bearishness on the charts.
- Decrease in prices has supported by volume and OI.
- RSI is moving at oversold region.

**Strategy: Sell**

Intraday Supports & Resistances			S2	S1	PCP	R1	R2
Gur	NCDEX	Sept	1130	1157.5	1167	1183	1192
Intraday Trade Call			Call	Entry	T1	T2	SL
Gur	NCDEX	Sept	<b>Sell</b>	Below 1177	1172	1169.5	1180

Do not carry forward the position until the next day.

**Disclaimer**

The information and opinions contained in the document have been compiled from sources believed to be reliable. The company does not warrant its accuracy, completeness and correctness. Use of data and information contained in this report is at your own risk. This document is not, and should not be construed as, an offer to sell or solicitation to buy any commodities. This document may not be reproduced, distributed or published, in whole or in part, by any recipient hereof for any purpose without prior permission from the Company. IASL and its affiliates and/or their officers, directors and employees may have positions in any commodities mentioned in this document (or in any related investment) and may from time to time add to or dispose of any such commodities (or investment). Please see the detailed disclaimer at <http://www.agriwatch.com/Disclaimer.asp>