

**Commodity: Sugar**  
**Contract: Oct**
**Exchange: NCDEX**  
**Expiry: 20<sup>th</sup> Oct, 2013**
**SUGAR**

**Technical Commentary:**

- Sugar prices are moving in a downtrend as chart depicts.
- Prices are hovering near to neutral region.
- Last candlestick depicts bearishness in the market.

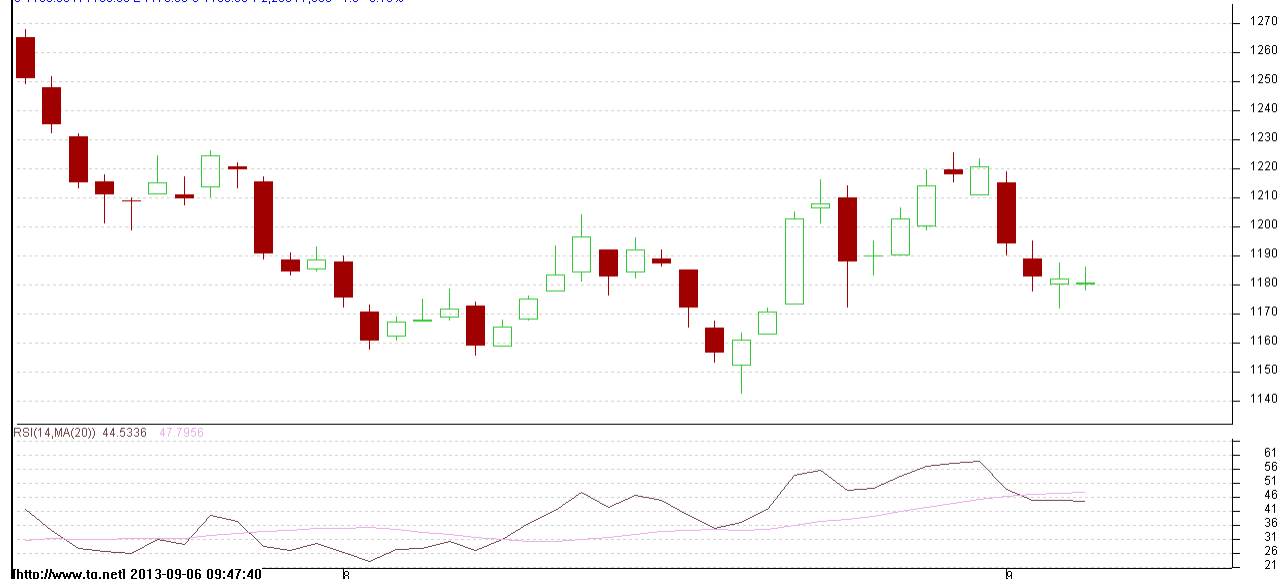
**Strategy: Buy**

Intraday Supports & Resistances			S2	S1	PCP	R1	R2
Sugar	NCDEX	Oct	2900	2997	3012	3066	3110
Intraday Trade Call			Call	Entry	T1	T2	SL
Sugar	NCDEX	Oct	Buy	Above 3007	3017	3022	3001

Do not carry forward the position until the next day.

**Commodity: Gur**  
**Contract: September**
**Exchange: NCDEX**  
**Expiry: Sept 20<sup>th</sup>, 2013**
**GUR**

GURCHMUZR 1309(NCCHMU3)2013/09/05 - Daily B:1179.50 A:1180.00  
 O 1180.00 H 1186.00 L 1178.00 C 1180.50 V 2,230 I 7,360 -1.5 -0.13%


**Technical Commentary:**

- Gur prices are showing bearishness on the charts.
- RSI is moving near to neutral region.
- Last candlestick depicts indecision.

**Strategy: Sell**

Intraday Supports & Resistances			S2	S1	PCP	R1	R2
Gur	NCDEX	Sept	1103	1147	1180.5	1210.5	1227
Intraday Trade Call			Call	Entry	T1	T2	SL
Gur	NCDEX	Sept	<b>Sell</b>	Below 1184	1178	1175	1187.5

Do not carry forward the position until the next day.

**Disclaimer**

The information and opinions contained in the document have been compiled from sources believed to be reliable. The company does not warrant its accuracy, completeness and correctness. Use of data and information contained in this report is at your own risk. This document is not, and should not be construed as, an offer to sell or solicitation to buy any commodities. This document may not be reproduced, distributed or published, in whole or in part, by any recipient hereof for any purpose without prior permission from the Company. IASL and its affiliates and/or their officers, directors and employees may have positions in any commodities mentioned in this document (or in any related investment) and may from time to time add to or dispose of any such commodities (or investment). Please see the detailed disclaimer at <http://www.agriwatch.com/Disclaimer.asp>