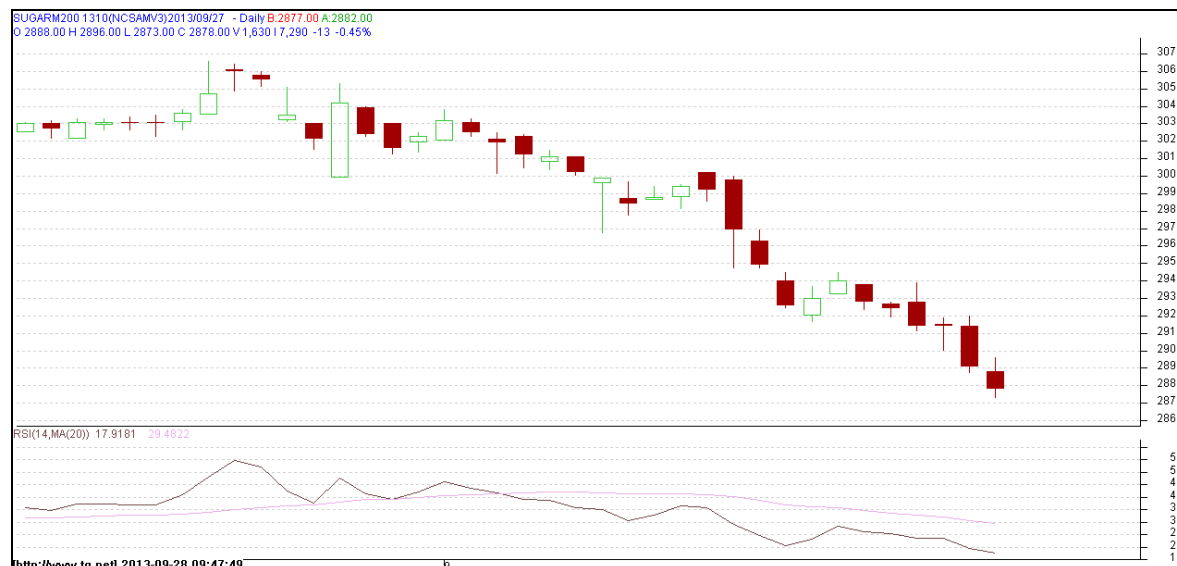


Commodity: Sugar
Contract: Oct

Exchange: NCDEX
Expiry: 20th Oct, 2013

SUGAR



Technical Commentary:

- Sugar prices are moving in a downtrend as chart depicts.
- Prices are hovering at oversold region.
- Last candlestick depicts bearishness in the market

Strategy: Sell

Intraday Supports & Resistances			S2	S1	PCP	R1	R2
Sugar	NCDEX	Oct	2825	2860	2878	2912	2925
Intraday Trade Call			Call	Entry	T1	T2	SL
Sugar	NCDEX	Oct	Sell	Above 2890	2875	2868	2898

Do not carry forward the position until the next day.

Commodity: Gur
Contract: November
Exchange: NCDEX
Expiry: Nov 20th, 2013
GUR

GURCHMUZR 1311(NCCHMX3)2013/09/27 - Daily B:1125.50 A:1127.50
 O:1129.50 H:1131.50 L:1123.00 C:1127.50 V:2,500 I:6,940 -3.5 -0.31%


Technical Commentary:

- Gur prices are showing range bound on the charts.
- RSI is moving near to neutral region.
- Last candlestick depicts bearishness.

Strategy: Sell

Intraday Supports & Resistances			S2	S1	PCP	R1	R2
Gur	NCDEX	Nov	1076.5	1105	1127.5	1138	1152
Intraday Trade Call			Call	Entry	T1	T2	SL
Gur	NCDEX	Nov	Sell	Below 1130	1125	1122.5	1133

Do not carry forward the position until the next day.

Disclaimer

The information and opinions contained in the document have been compiled from sources believed to be reliable. The company does not warrant its accuracy, completeness and correctness. Use of data and information contained in this report is at your own risk. This document is not, and should not be construed as, an offer to sell or solicitation to buy any commodities. This document may not be reproduced, distributed or published, in whole or in part, by any recipient hereof for any purpose without prior permission from the Company. IASL and its affiliates and/or their officers, directors and employees may have positions in any commodities mentioned in this document (or in any related investment) and may from time to time add to or dispose of any such commodities (or investment). Please see the detailed disclaimer at <http://www.agriwatch.com/Disclaimer.asp>