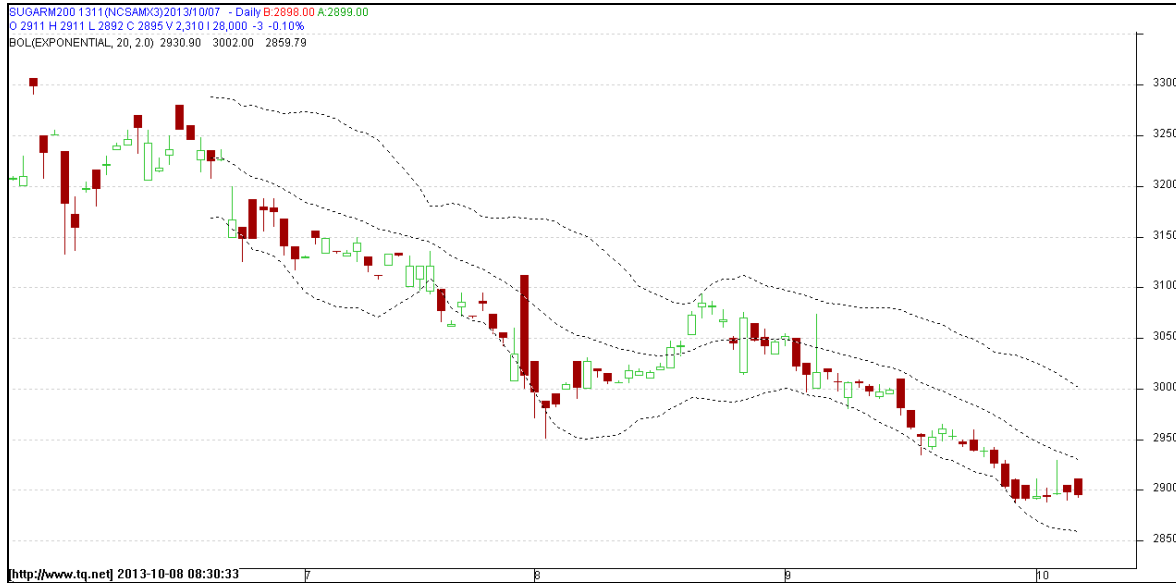


**Commodity: Sugar**  
**Contract: Nov**
**Exchange: NCDEX**  
**Expiry: 20<sup>th</sup> Nov, 2013**
**SUGAR**

**Technical Commentary:**

- Sugar prices are moving in a downtrend as chart depicts.
- Prices are hovering at oversold region.
- Last candlestick depicts bearishness in the market

**Strategy: Sell**

Intraday Supports & Resistances			S2	S1	PCP	R1	R2
Sugar	NCDEX	Nov	2806	2826	2892	2912	2925
Intraday Trade Call			Call	Entry	T1	T2	SL
Sugar	NCDEX	Nov	<b>Sell</b>	Below 2890	2880	2875	2996

Do not carry forward the position until the next day.

**Commodity: Gur**  
**Contract: November**
**Exchange: NCDEX**  
**Expiry: Nov 20<sup>th</sup>, 2013**
**GUR**

GURCHMUZR 1311(NCCHMX3)2013/10/07 - Daily B:1141.50 A:1142.50  
 O 1143.50 H 1146.00 L 1138.00 C 1141.00 V 3,75016,920 -0.5 -0.04%  
 BOL(EXPONENTIAL, 20, 2.0) 1130.61 1145.13 1116.10


**Technical Commentary:**

- Gur prices are showing range bound on the charts.
- RSI is moving near to neutral region.
- Last candlestick depicts indecision.

**Strategy: Wait**

Intraday Supports & Resistances			S2	S1	PCP	R1	R2
Gur	NCDEX	Nov	1117.5	1125.5	1131.50	1154	1171
Intraday Trade Call			Call	Entry	T1	T2	SL
Gur	NCDEX	Nov	Wait	-	-	-	-

Do not carry forward the position until the next day.

**Disclaimer**

The information and opinions contained in the document have been compiled from sources believed to be reliable. The company does not warrant its accuracy, completeness and correctness. Use of data and information contained in this report is at your own risk. This document is not, and should not be construed as, an offer to sell or solicitation to buy any commodities. This document may not be reproduced, distributed or published, in whole or in part, by any recipient hereof for any purpose without prior permission from the Company. IASL and its affiliates and/or their officers, directors and employees may have positions in any commodities mentioned in this document (or in any related investment) and may from time to time add to or dispose of any such commodities (or investment). Please see the detailed disclaimer at <http://www.agriwatch.com/Disclaimer.asp>