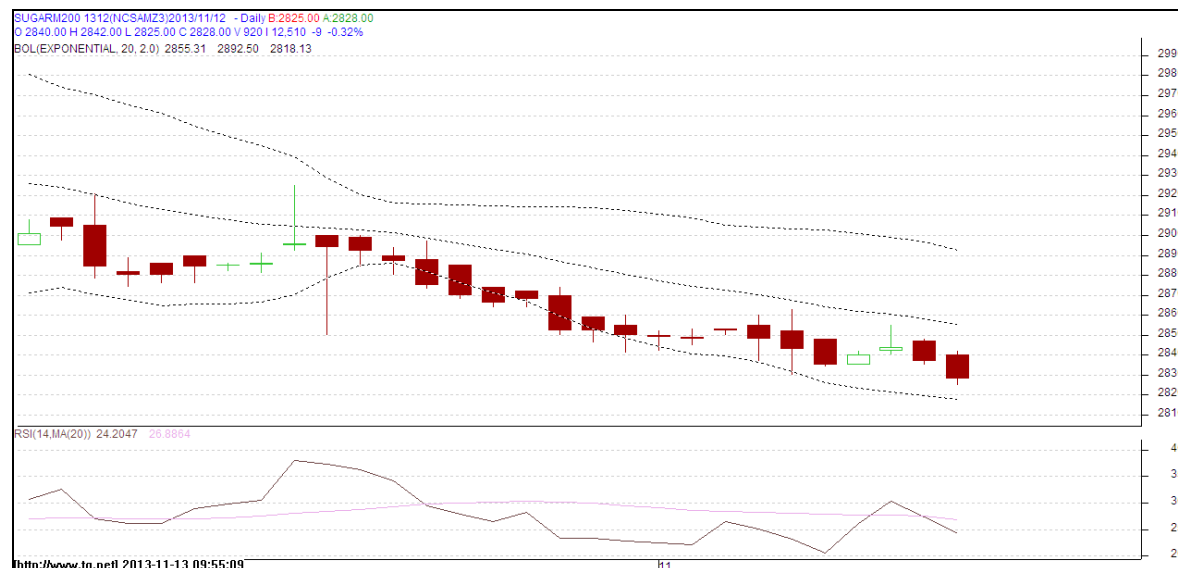


**Commodity: Sugar**  
**Contract: Dec**
**Exchange: NCDEX**  
**Expiry: 20<sup>th</sup> Dec, 2013**
**SUGAR**

**Technical Commentary:**

- Sugar prices are moving in a downtrend as chart depicts.
- Prices are hovering at oversold region.
- Last candlestick depicts bearishness.

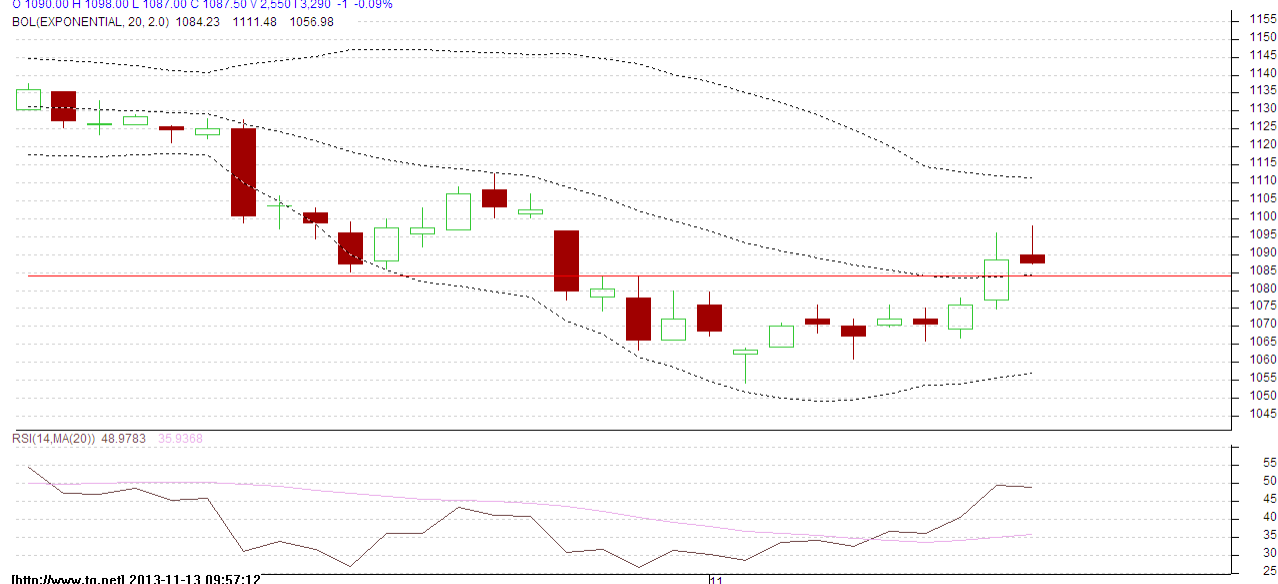
**Strategy: Sell**

Intraday Supports & Resistances			S2	S1	PCP	R1	R2
Sugar	NCDEX	Dec	2814	2820	2828	2887	2896
Intraday Trade Call			Call	Entry	T1	T2	SL
Sugar	NCDEX	Dec	<b>Sell</b>	Near 2832	2824	2820	3236

Do not carry forward the position until the next day.

**Commodity: Gur**  
**Contract: Nov**
**Exchange: NCDEX**  
**Expiry: Nov 20<sup>th</sup>, 2013**
**GUR**

GURCHMUZR 13111NCCHMX3/2013/11/12 - Daily  
 O 1090.00 H 1098.00 L 1087.00 C 1087.50 V 2.55013.290 -1 -0.09%  
 BOL(EXPONENTIAL, 20, 2.0) 1084.23 1111.48 1056.98


**Technical Commentary:**

- Gur prices are showing range bound on the charts.
- RSI is moving near to neutral region.
- Last candlestick depicts bearishness in the market.

**Strategy: Buy**

Intraday Supports & Resistances			S2	S1	PCP	R1	R2
Gur	NCDEX	Nov	1045.5	1054	1087.5	1100	1112.5
Intraday Trade Call			Call	Entry	T1	T2	SL
Gur	NCDEX	Nov	<b>Sell</b>	Below 1087	1083	1081	1089

Do not carry forward the position until the next day.

**Disclaimer**

The information and opinions contained in the document have been compiled from sources believed to be reliable. The company does not warrant its accuracy, completeness and correctness. Use of data and information contained in this report is at your own risk. This document is not, and should not be construed as, an offer to sell or solicitation to buy any commodities. This document may not be reproduced, distributed or published, in whole or in part, by any recipient hereof for any purpose without prior permission from the Company. IASL and its affiliates and/or their officers, directors and employees may have positions in any commodities mentioned in this document (or in any related investment) and may from time to time add to or dispose of any such commodities (or investment). Please see the detailed disclaimer at <http://www.agriwatch.com/Disclaimer.asp>