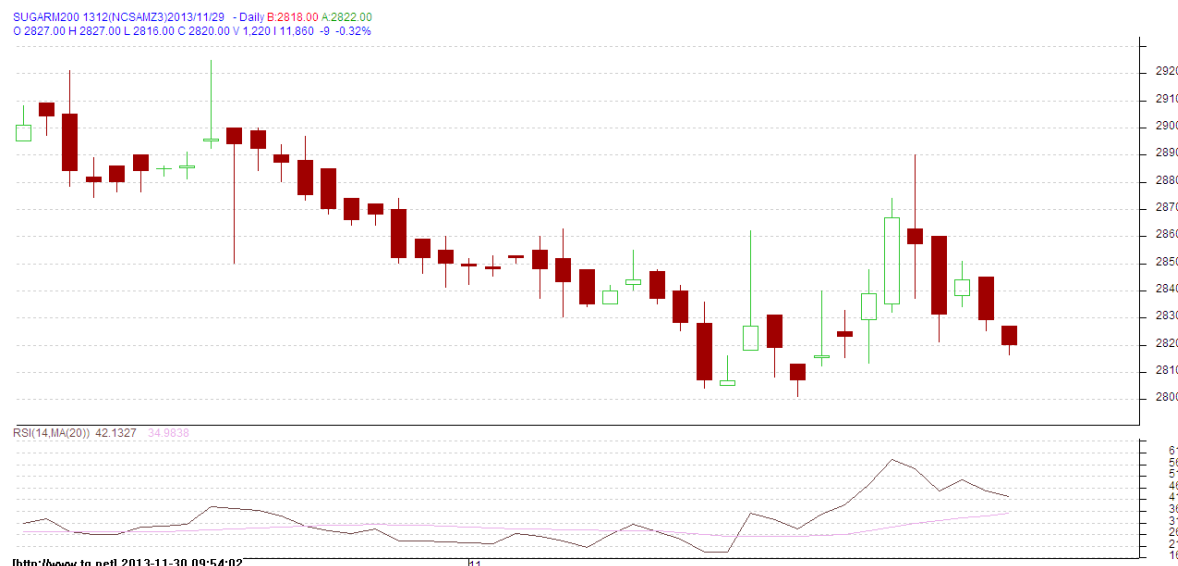


**Commodity: Sugar**  
**Contract: Dec**
**Exchange: NCDEX**  
**Expiry: 20<sup>th</sup> Dec, 2013**
**SUGAR**

**Technical Commentary:**

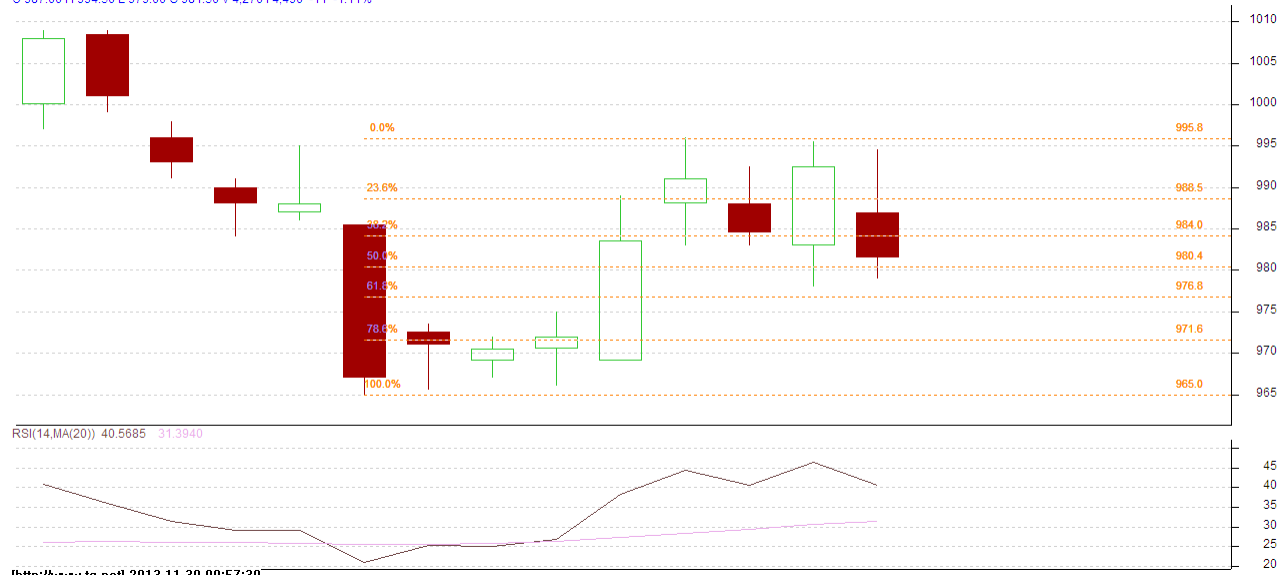
- Sugar prices are showing some upward correction as chart depicts.
- Prices are hovering at neutral region.
- Last candlestick depicts bearishness.

**Strategy: Sell**

| Intraday Supports & Resistances |       |     | S2          | S1         | PCP  | R1   | R2   |
|---------------------------------|-------|-----|-------------|------------|------|------|------|
| Sugar                           | NCDEX | Dec | 2765        | 2783       | 2820 | 2885 | 2899 |
| Intraday Trade Call             |       |     | Call        | Entry      | T1   | T2   | SL   |
| Sugar                           | NCDEX | Dec | <b>Sell</b> | Below 2815 | 2805 | 2800 | 2821 |

Do not carry forward the position until the next day.

**Commodity: Gur**  
**Contract: Dec**
**Exchange: NCDEX**  
**Expiry: Dec 20<sup>th</sup>, 2013**
**GUR**

GURCHMUZR 1312(NCCHMZ3)2013/11/29 - Daily B 981.00 A 981.50  
O 987.00 H 994.50 L 979.00 C 981.50 V 4,270 14,490 -11 -1.11%

**Technical Commentary:**

- Gur prices shows some upward correction as chart depicts.
- RSI is moving near to neutral region.
- Last candlestick depicts bearishness in the market.

**Strategy: Sell**

| Intraday Supports & Resistances |       |     | S2   | S1        | PCP   | R1   | R2   |
|---------------------------------|-------|-----|------|-----------|-------|------|------|
| Gur                             | NCDEX | Dec | 964  | 975       | 981.5 | 1000 | 1011 |
| Intraday Trade Call             |       |     | Call | Entry     | T1    | T2   | SL   |
| Gur                             | NCDEX | Dec | Sell | Below 984 | 980   | 978  | 986  |

Do not carry forward the position until the next day.

**Disclaimer**

The information and opinions contained in the document have been compiled from sources believed to be reliable. The company does not warrant its accuracy, completeness and correctness. Use of data and information contained in this report is at your own risk. This document is not, and should not be construed as, an offer to sell or solicitation to buy any commodities. This document may not be reproduced, distributed or published, in whole or in part, by any recipient hereof for any purpose without prior permission from the Company. IASL and its affiliates and/or their officers, directors and employees may have positions in any commodities mentioned in this document (or in any related investment) and may from time to time add to or dispose of any such commodities (or investment). Please see the detailed disclaimer at <http://www.agriwatch.com/Disclaimer.asp>