

Commodity: Sugar
Contract: Dec

Exchange: NCDEX
Expiry: 20th Dec, 2013

SUGAR



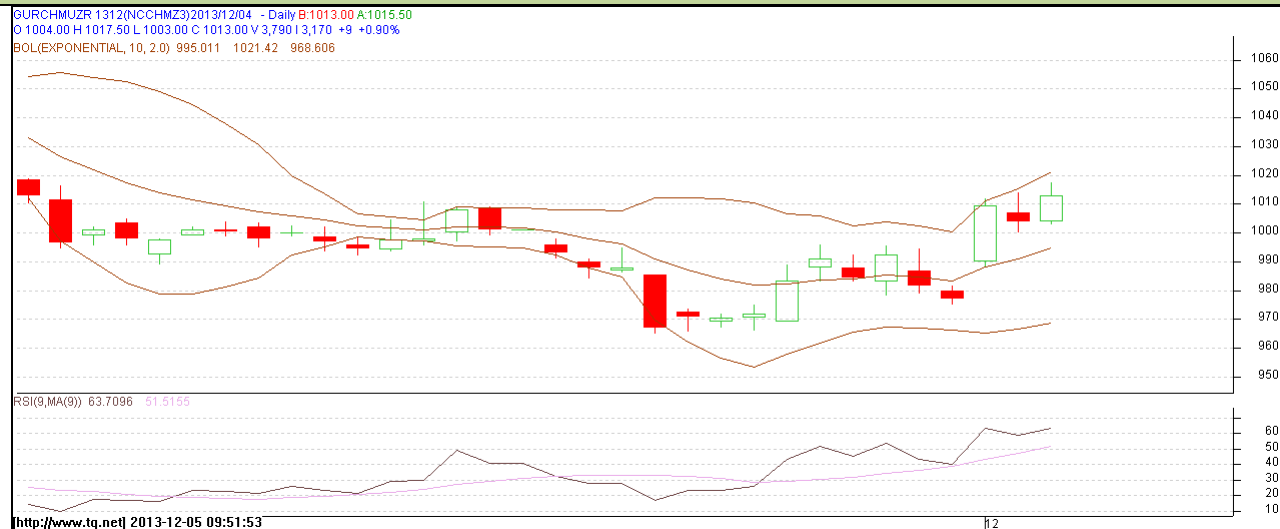
Technical Commentary:

- Sugar prices are showing some upward correction as chart depicts.
- Prices are hovering at neutral region.
- Last candlestick depicts bearishness.

Strategy: Sell

Intraday Supports & Resistances			S2	S1	PCP	R1	R2
Sugar	NCDEX	Dec	-	2700	2729	2885	2899
Intraday Trade Call			Call	Entry	T1	T2	SL
Sugar	NCDEX	Dec	Sell	Below 2740	2730	2725	2746

Do not carry forward the position until the next day.

Commodity: Gur
Contract: Dec
Exchange: NCDEX
Expiry: Dec 20th, 2013
GUR

Technical Commentary:

- Gur prices shows some upward correction as chart depicts.
- RSI is moving near to neutral region.
- Last candlestick depicts bullishness in the market.

Strategy: Buy

Intraday Supports & Resistances			S2	S1	PCP	R1	R2
Gur	NCDEX	Dec	953	965	1010	1028	1035
Intraday Trade Call			Call	Entry	T1	T2	SL
Gur	NCDEX	Dec	Buy	Above 1010	1015	1017	1007

Do not carry forward the position until the next day.

Disclaimer

The information and opinions contained in the document have been compiled from sources believed to be reliable. The company does not warrant its accuracy, completeness and correctness. Use of data and information contained in this report is at your own risk. This document is not, and should not be construed as, an offer to sell or solicitation to buy any commodities. This document may not be reproduced, distributed or published, in whole or in part, by any recipient hereof for any purpose without prior permission from the Company. IASL and its affiliates and/or their officers, directors and employees may have positions in any commodities mentioned in this document (or in any related investment) and may from time to time add to or dispose of any such commodities (or investment). Please see the detailed disclaimer at <http://www.agriwatch.com/Disclaimer.asp>