

Commodity: Refined Soybean Oil
Contract: Aug

Exchange: NCDEX
Expiry: July 20th, 2013

REFINED SOYBEAN OIL (RSBO)

Technical Commentary:

- Candlestick chart pattern indicates slight gains in the previous session.
- Prices closed below 10-day and 20-day EMA support the bears.
- PVO analysis depicts long liquidation in the previous trading session.
- RSI is in between oversold and neutral region.

The soy oil prices are likely to trade range bound movement.



Strategy: Sell

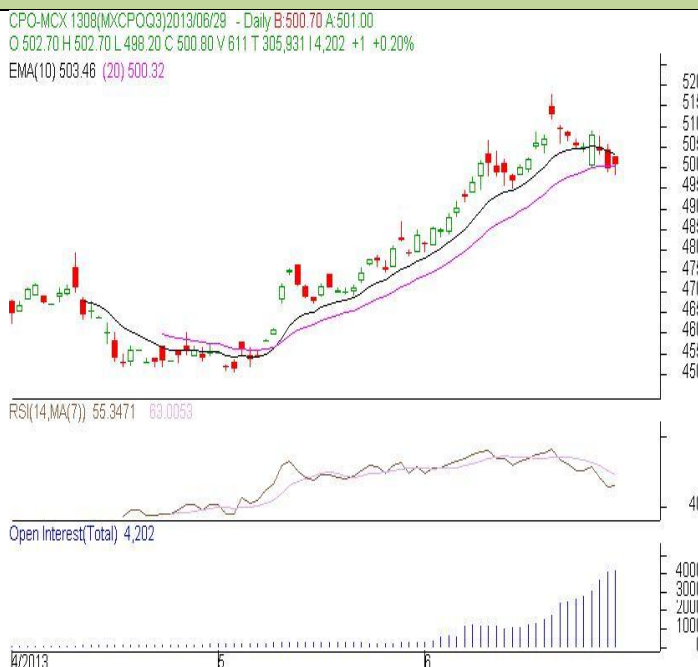
Intraday Supports & Resistances			S2	S1	PCP	R1	R2
Refined Soy Oil	NCDEX	Aug	655	658.00	663.15	669	671.50
Intraday Trade Call			Call	Entry	T1	T2	SL
Refined Soy Oil	NCDEX	Aug	Sell	Below 662	659	658	663.50

* Do not carry-forward the position next day.

Commodity: Crude Palm Oil
Contract: Aug
Exchange: MCX
Expiry: July 30th, 2013
CRUDE PALM OIL (CPO)
Technical Commentary:

- Candlestick chart pattern reflects consolidation in the market.
- Prices closed below 10-day and 20-day EMA.
- PVO analysis depicts short build up in the previous trading session.
- RSI is in between overbought to neutral zone.

The CPO prices are likely to feature sideways tone.


Strategy: Sell

Intraday Supports & Resistances			S2	S1	PCP	R1	R2
Crude Palm Oil	MCX	Aug	493	496	501.80	506	508
Intraday Trade Call			Call	Entry	T1	T2	SL
Crude Palm Oil	MCX	Aug	Sell	502-503	499	498	504.25

* Do not carry-forward the position next day.

Disclaimer

The information and opinions contained in the document have been compiled from sources believed to be reliable. The company does not warrant its accuracy, completeness and correctness. Use of data and information contained in this report is at your own risk. This document is not, and should not be construed as, an offer to sell or solicitation to buy any commodities. This document may not be reproduced, distributed or published, in whole or in part, by any recipient hereof for any purpose without prior permission from the Company. IASL and its affiliates and/or their officers, directors and employees may have positions in any commodities mentioned in this document (or in any related investment) and may from time to time add to or dispose of any such commodities (or investment). Please see the detailed disclaimer at <http://www.agriwatch.com/Disclaimer.asp>
 © 2013 Indian Agribusiness Systems Pvt Ltd.