

Commodity: Refined Soybean Oil  
Contract: Aug

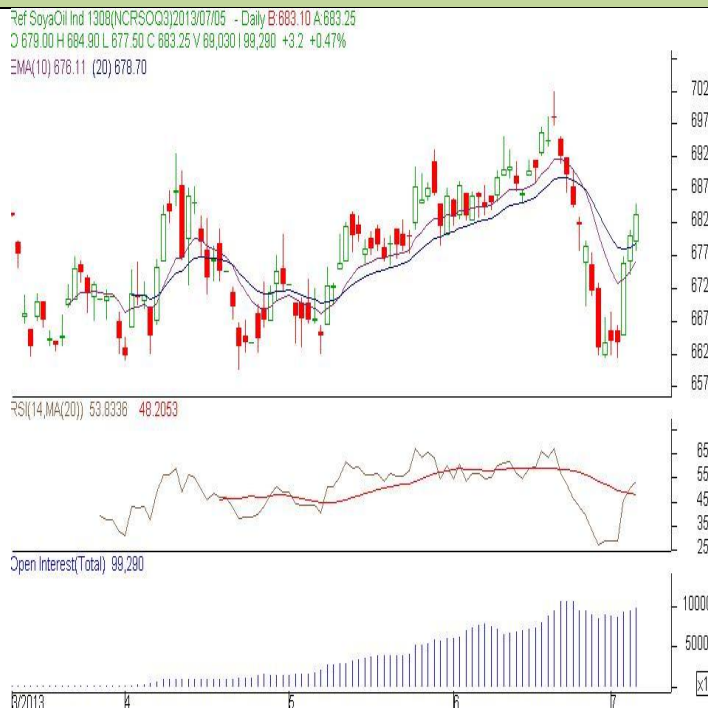
Exchange: NCDEX  
Expiry: July 20<sup>th</sup>, 2013

### REFINED SOYBEAN OIL (RSBO)

#### Technical Commentary:

- Candlestick chart pattern indicates gains in the previous session.
- Prices closed above 10-day and 20-day EMA support the bulls.
- PVO analysis depicts long build up in the previous trading session.
- RSI is in between oversold and neutral region.

*The soy oil prices are likely to trade range bound to firm movement.*



#### Strategy: Buy

Intraday Supports & Resistances			S2	S1	PCP	R1	R2
Refined Soy Oil	NCDEX	Aug	675	677.25	683.25	687	690
Intraday Trade Call			Call	Entry	T1	T2	SL
Refined Soy Oil	NCDEX	Aug	Buy	680-681	683.50	684.50	679

\* Do not carry-forward the position next day.

**Commodity: Crude Palm Oil**  
**Contract: Aug**
**Exchange: MCX**  
**Expiry: July 30th, 2013**
**CRUDE PALM OIL (CPO)**
**Technical Commentary:**

- Candlestick chart pattern reflects gains in the market.
- Prices closed above 10-day and 20-day EMA support the bulls.
- PVO analysis depicts long build up in the previous trading session.
- RSI is in between overbought to neutral zone.

*The CPO prices are likely to feature sideways.*


**Strategy: Wait**

Intraday Supports & Resistances			S2	S1	PCP	R1	R2
Crude Palm Oil	MCX	Aug	496	499	507.10	512	514.50
Intraday Trade Call			Call	Entry	T1	T2	SL
Crude Palm Oil	MCX	Aug	Wait	-	-	-	-

\* Do not carry-forward the position next day.

**Disclaimer**

The information and opinions contained in the document have been compiled from sources believed to be reliable. The company does not warrant its accuracy, completeness and correctness. Use of data and information contained in this report is at your own risk. This document is not, and should not be construed as, an offer to sell or solicitation to buy any commodities. This document may not be reproduced, distributed or published, in whole or in part, by any recipient hereof for any purpose without prior permission from the Company. IASL and its affiliates and/or their officers, directors and employees may have positions in any commodities mentioned in this document (or in any related investment) and may from time to time add to or dispose of any such commodities (or investment). Please see the detailed disclaimer at <http://www.agriwatch.com/Disclaimer.asp>  
 © 2013 Indian Agribusiness Systems Pvt Ltd.