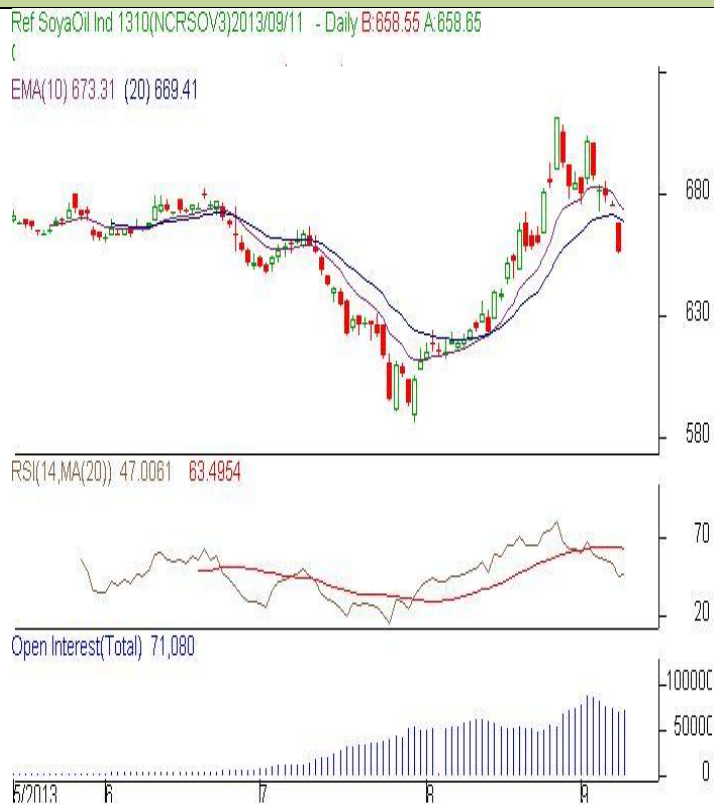


**Commodity: Refined Soybean Oil**  
**Contract: Oct**
**Exchange: NCDEX**  
**Expiry: Oct 20<sup>th</sup>, 2013**
**REFINED SOYBEAN OIL (RSBO)**
**Technical Commentary:**

- Candlestick chart pattern indicates weakness in the market.
- PVO analysis reflects short build up in the market.
- Prices closed below 9-day and 18-day EMA support the bears.
- Oscillator RSI is in over bought region.

*The soy oil prices are likely to feature range bound movement to weak note today.*


**Strategy: Sell**

Intraday Supports & Resistances			S2	S1	PCP	R1	R2
Refined Soy Oil	NCDEX	Oct	647.00	650.00	656.45	662.00	665.00
Intraday Trade Call			Call	Entry	T1	T2	SL
Refined Soy Oil	NCDEX	Oct	<b>Sell</b>	Below 662.70	659	658.50	664.92

\* Do not carry-forward the position next day.

**Commodity: Crude Palm Oil**  
**Contract: Oct**
**Exchange: MCX**  
**Expiry: Oct 30th, 2013**
**CRUDE PALM OIL (CPO)**
**Technical Commentary:**

- Candlestick chart pattern reflects weakness in the market.
- PVO analysis reflects short build up. Prices closed below 9-day and 18-day EMA support the bears.
- Oscillator RSI is in over bought zone.

*The CPO prices are likely to feature range bound movement to weak tone today.*


**Strategy: Sell**

Intraday Supports & Resistances			S2	S1	PCP	R1	R2
Crude Palm Oil	MCX	Oct	519.00	522.00	528.70	536.00	538.50
Intraday Trade Call			Call	Entry	T1	T2	SL
Crude Palm Oil	MCX	Oct	<b>Sell</b>	Below 534	531	530	535.80

\* Do not carry-forward the position next day.

**Disclaimer**

The information and opinions contained in the document have been compiled from sources believed to be reliable. The company does not warrant its accuracy, completeness and correctness. Use of data and information contained in this report is at your own risk. This document is not, and should not be construed as, an offer to sell or solicitation to buy any commodities. This document may not be reproduced, distributed or published, in whole or in part, by any recipient hereof for any purpose without prior permission from the Company. IASL and its affiliates and/or their officers, directors and employees may have positions in any commodities mentioned in this document (or in any related investment) and may from time to time add to or dispose of any such commodities (or investment). Please see the detailed disclaimer at <http://www.agriwatch.com/Disclaimer.asp>  
 © 2013 Indian Agribusiness Systems Pvt Ltd.