

Commodity: Refined Soybean Oil
Contract: Oct

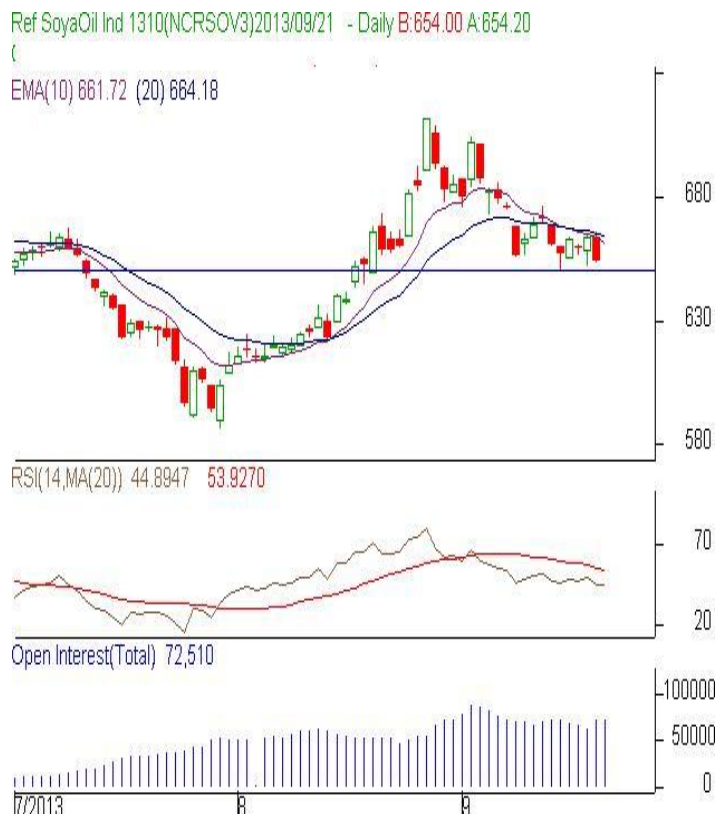
Exchange: NCDEX
Expiry: Oct 20th, 2013

REFINED SOYBEAN OIL (RSBO)

Technical Commentary:

- Candlestick chart pattern indicates weakness in the market. However, market may consolidate.
- PVO analysis reflects short build up in the market.
- Prices closed below 9-day and 18-day EMA support the bears.
- Oscillator RSI is in neutral region.

The soy oil prices are likely to feature range bound movement today.



Strategy: Sell

Intraday Supports & Resistances			S2	S1	PCP	R1	R2
Refined Soy Oil	NCDEX	Oct	647.50	649.00	654.40	662.00	665.00
Intraday Trade Call			Call	Entry	T1	T2	SL
Refined Soy Oil	NCDEX	Oct	Sell	Below 656	652	651	658

* Do not carry-forward the position next day.

Commodity: Crude Palm Oil
Contract: Oct
Exchange: MCX
Expiry: Oct 30th, 2013
CRUDE PALM OIL (CPO)
Technical Commentary:

- Candlestick chart pattern reflects weakness in the market. However, market may consolidate.
- PVO analysis reflects long build up. Prices closed below 9-day and 18-day EMA support the bears.
- Oscillator RSI is in oversold zone.

The CPO prices are likely to feature range bound tone today.

CPO-MCX 1310(MXCPOV3)2013/09/21 - Daily B:515.10 A:515.70

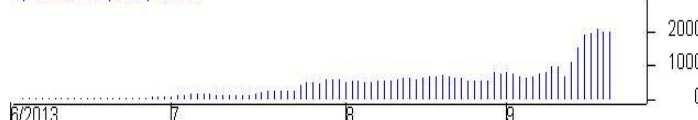
EMA(10) 520.84 (20) 524.35



RSI(14,MA(7)) 43.1387 43.7367



Open Interest(Total) 1,986


Strategy: Buy

Intraday Supports & Resistances			S2	S1	PCP	R1	R2
Crude Palm Oil	MCX	Oct	506.00	509.00	514.00	520.00	523.00
Intraday Trade Call			Call	Entry	T1	T2	SL
Crude Palm Oil	MCX	Oct	Buy	Above 511.80	514.20	515.00	510.40

* Do not carry-forward the position next day.

Disclaimer

The information and opinions contained in the document have been compiled from sources believed to be reliable. The company does not warrant its accuracy, completeness and correctness. Use of data and information contained in this report is at your own risk. This document is not, and should not be construed as, an offer to sell or solicitation to buy any commodities. This document may not be reproduced, distributed or published, in whole or in part, by any recipient hereof for any purpose without prior permission from the Company. IASL and its affiliates and/or their officers, directors and employees may have positions in any commodities mentioned in this document (or in any related investment) and may from time to time add to or dispose of any such commodities (or investment). Please see the detailed disclaimer at <http://www.agriwatch.com/Disclaimer.asp>
 © 2013 Indian Agribusiness Systems Pvt Ltd.