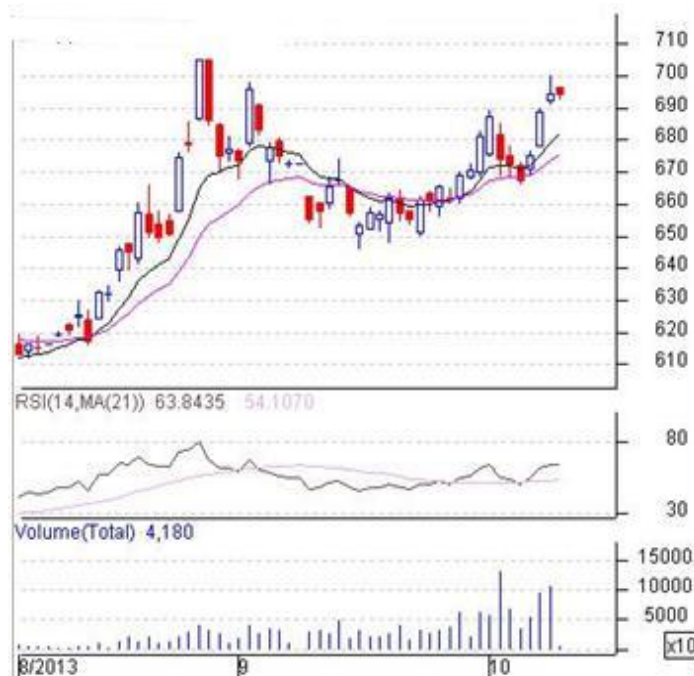


Commodity: Refined Soybean Oil
Contract: Nov
Exchange: NCDEX
Expiry: Nov 20th, 2013
REFINED SOYBEAN OIL (RSBO)
Technical Commentary:

- Candlestick chart pattern indicates gains. However, market may consolidate in the near term.
- Prices closed above 9-day EMA, which support the bulls but may take correction.
- Oscillator RSI is in neutral region.

The soy oil prices are likely to feature range bound movement.


Strategy: Sell

Intraday Supports & Resistances			S2	S1	PCP	R1	R2
Refined Soy Oil	NCDEX	Nov	679.00	682.00	701.00	708.00	715.00
Intraday Trade Call			Call	Entry	T1	T2	SL
Refined Soy Oil	NCDEX	Nov	Sell	Below 700	698	696	701.20

* Do not carry-forward the position next day.

Commodity: Crude Palm Oil
Contract: Nov
Exchange: MCX
Expiry: Nov 20th, 2013
CRUDE PALM OIL (CPO)
Technical Commentary:

- Candlestick chart pattern reflects consolidation in the market.
- PVO analysis reflects consolidation market. Prices closed above 9-day and 18-day EMA.
- Oscillator RSI is rising in the neutral zone.

The CPO prices are likely to feature range bound today.


Strategy: Buy

Intraday Supports & Resistances			S2	S1	PCP	R1	R2
Crude Palm Oil	MCX	Nov	506.00	509.00	518.80	521.00	527.00
Intraday Trade Call			Call	Entry	T1	T2	SL
Crude Palm Oil	MCX	Nov	Buy	Below 517.00	515.00	513	518.20

* Do not carry-forward the position next day.

Disclaimer

The information and opinions contained in the document have been compiled from sources believed to be reliable. The company does not warrant its accuracy, completeness and correctness. Use of data and information contained in this report is at your own risk. This document is not, and should not be construed as, an offer to sell or solicitation to buy any commodities. This document may not be reproduced, distributed or published, in whole or in part, by any recipient hereof for any purpose without prior permission from the Company. IASL and its affiliates and/or their officers, directors and employees may have positions in any commodities mentioned in this document (or in any related investment) and may from time to time add to or dispose of any such commodities (or investment). Please see the detailed disclaimer at <http://www.agriwatch.com/Disclaimer.asp>
 © 2013 Indian Agribusiness Systems Pvt Ltd.