

Commodity: Refined Soybean Oil
Contract: Nov

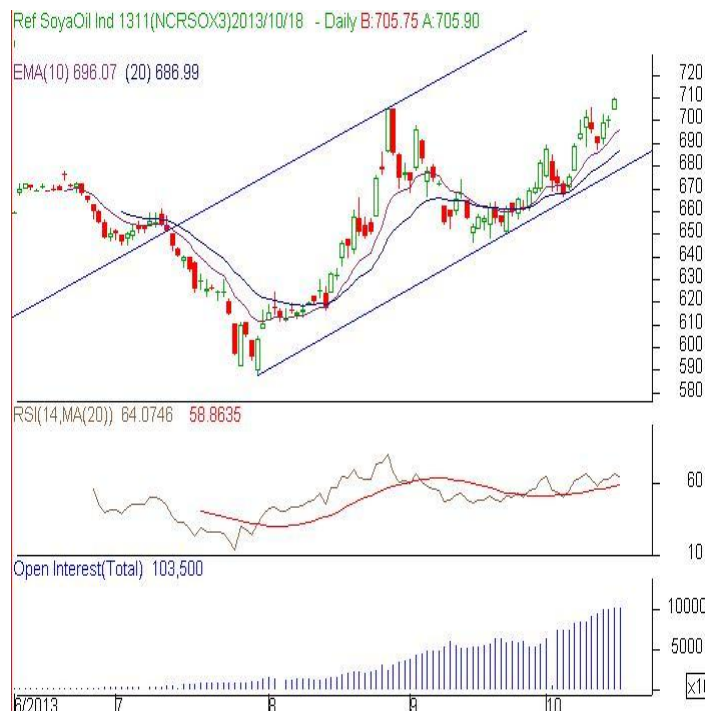
Exchange: NCDEX
Expiry: Nov 20th, 2013

REFINED SOYBEAN OIL (RSBO)

Technical Commentary:

- Candlestick chart pattern indicates gains. However, market may consolidate in the near term.
- PVO analysis reflects long build up. Prices closed above 10-day EMA support the bulls.
- Oscillator RSI is in neutral region.

The soy oil prices are likely to feature range bound movement.



Strategy: Buy

Intraday Supports & Resistances			S2	S1	PCP	R1	R2
Refined Soy Oil	NCDEX	Nov	698	702	709.35	714	718
Intraday Trade Call			Call	Entry	T1	T2	SL
Refined Soy Oil	NCDEX	Nov	Buy	Above 704	708	709	701.60

* Do not carry-forward the position next day.

Commodity: Crude Palm Oil
Contract: Nov
Exchange: MCX
Expiry: Nov 20th, 2013
CRUDE PALM OIL (CPO)
Technical Commentary:

- Candlestick chart pattern reflects consolidation in the market.
- PVO analysis reflects consolidation market. Prices closed below 10-day and 20-day EMA.
- Oscillator RSI is in between oversold and neutral zone.

The CPO prices are likely to feature range bound to firm tone today.

CPO-MCX 1311(MXCPOX3)2013/10/18 - Daily B:525.40 A:525.70

EMA(10) 519.95 (20) 518.95


Strategy: Wait

Intraday Supports & Resistances			S2	S1	PCP	R1	R2
Crude Palm Oil	MCX	Nov	517	520	526.20	532	535
Intraday Trade Call			Call	Entry	T1	T2	SL
Crude Palm Oil	MCX	Nov	Wait	-	-	-	-

* Do not carry-forward the position next day.

Disclaimer

The information and opinions contained in the document have been compiled from sources believed to be reliable. The company does not warrant its accuracy, completeness and correctness. Use of data and information contained in this report is at your own risk. This document is not, and should not be construed as, an offer to sell or solicitation to buy any commodities. This document may not be reproduced, distributed or published, in whole or in part, by any recipient hereof for any purpose without prior permission from the Company. IASL and its affiliates and/or their officers, directors and employees may have positions in any commodities mentioned in this document (or in any related investment) and may from time to time add to or dispose of any such commodities (or investment). Please see the detailed disclaimer at <http://www.agriwatch.com/Disclaimer.asp>
 © 2013 Indian Agribusiness Systems Pvt Ltd.