

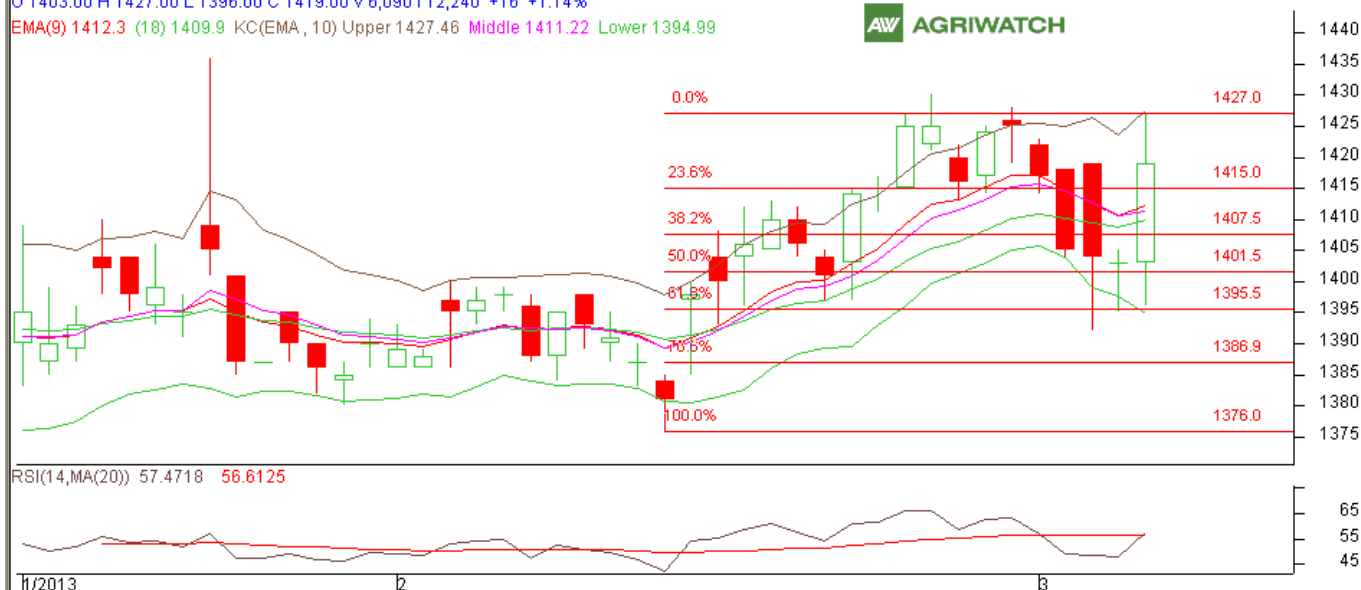
**Commodity: Wheat**  
**Contract: April**

**Exchange: NCDEX**  
**Expiry: April 19<sup>th</sup>, 2013**

## Wheat

Wheat New Delhi 1304(NCWHMJ3)2013/03/06 - Daily B:1411.00 A:1420.00  
O 1403.00 H 1427.00 L 1396.00 C 1419.00 V 6,090 I 12,240 +16 +1.14%

EMA(9) 1412.3 (18) 1409.9 KC(EMA, 10) Upper 1427.46 Middle 1411.22 Lower 1394.99



### Technical Commentary:

- Candlesticks chart shows Engulfing pattern in previous day trading session.
- In yesterday's trading session rise in OI, volume and Price indicate towards long Buildup.
- Oscillator RSI is moving up in the neutral Zone.
- Price closed above 9 and 18 days EMA.
- Last candlestick of engulfing pattern shows sell on rise, among the market participants.

### Strategy: Sell on Rise

Intraday Supports & Resistances			S2	S1	PCP	R1	R2
Wheat	NCDEX	April	1387	1396	1419	1427	1435
Intraday Trade Call*			Call	Entry	T1	T2	SL
Wheat	NCDEX	April	<b>Sell</b>	Below 1417	1412	1408	1421

\*Do not carry forward the position until the next day.

### Disclaimer

The information and opinions contained in the document have been compiled from sources believed to be reliable. The company does not warrant its accuracy, completeness and correctness. Use of data and information contained in this report is at your own risk. This document is not, and should not be construed as, an offer to sell or solicitation to buy any commodities. This document may not be reproduced, distributed or published, in whole or in part, by any recipient hereof for any purpose without prior permission from the Company. IASL and its affiliates and/or their officers, directors and employees may have positions in any commodities mentioned in this document (or in any related investment) and may from time to time add to or dispose of any such commodities (or investment). Please see the detailed disclaimer at <http://www.agriwatch.com/Disclaimer.php> © 2005 Indian Agribusiness Systems Pvt Ltd.