

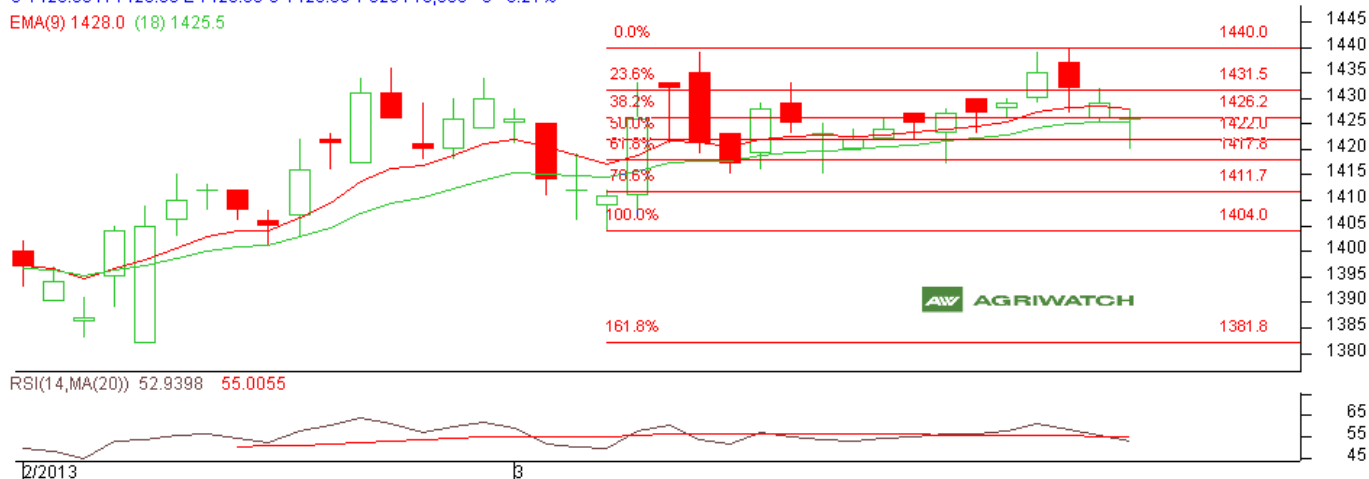
Commodity: Wheat
Contract: May

Exchange: NCDEX
Expiry: May 20th, 2013

Wheat

O 1426.00 H 1428.00 L 1420.00 C 1426.00 V 820113,300 -3 -0.21%

EMA(9) 1428.0 (18) 1425.5



Technical Commentary:

- Candlesticks chart shows downward movement and depicts bearishness.
- In yesterday's trading session fall in price but rise in OI indicate towards Short Buildup.
- Oscillator RSI is moving in the neutral Zone.
- Price closed between 9 and 18 days EMA.
- Last Candlestick Doji indicates indecision among market participant.

Strategy: Sell from entry level

Intraday Supports & Resistances			S2	S1	PCP	R1	R2
Wheat	NCDEX	May	1411	1415	1426	1440	1452
Intraday Trade Call*			Call	Entry	T1	T2	SL
Wheat	NCDEX	May	Sell	Below 1426	1420	1417	1431

*Do not carry forward the position until the next day.

Disclaimer

The information and opinions contained in the document have been compiled from sources believed to be reliable. The company does not warrant its accuracy, completeness and correctness. Use of data and information contained in this report is at your own risk. This document is not, and should not be construed as, an offer to sell or solicitation to buy any commodities. This document may not be reproduced, distributed or published, in whole or in part, by any recipient hereof for any purpose without prior permission from the Company. IASL and its affiliates and/or their officers, directors and employees may have positions in any commodities mentioned in this document (or in any related investment) and may from time to time add to or dispose of any such commodities (or investment). Please see the detailed disclaimer at <http://www.agriwatch.com/Disclaimer.php> © 2005 Indian Agribusiness Systems Pvt Ltd.