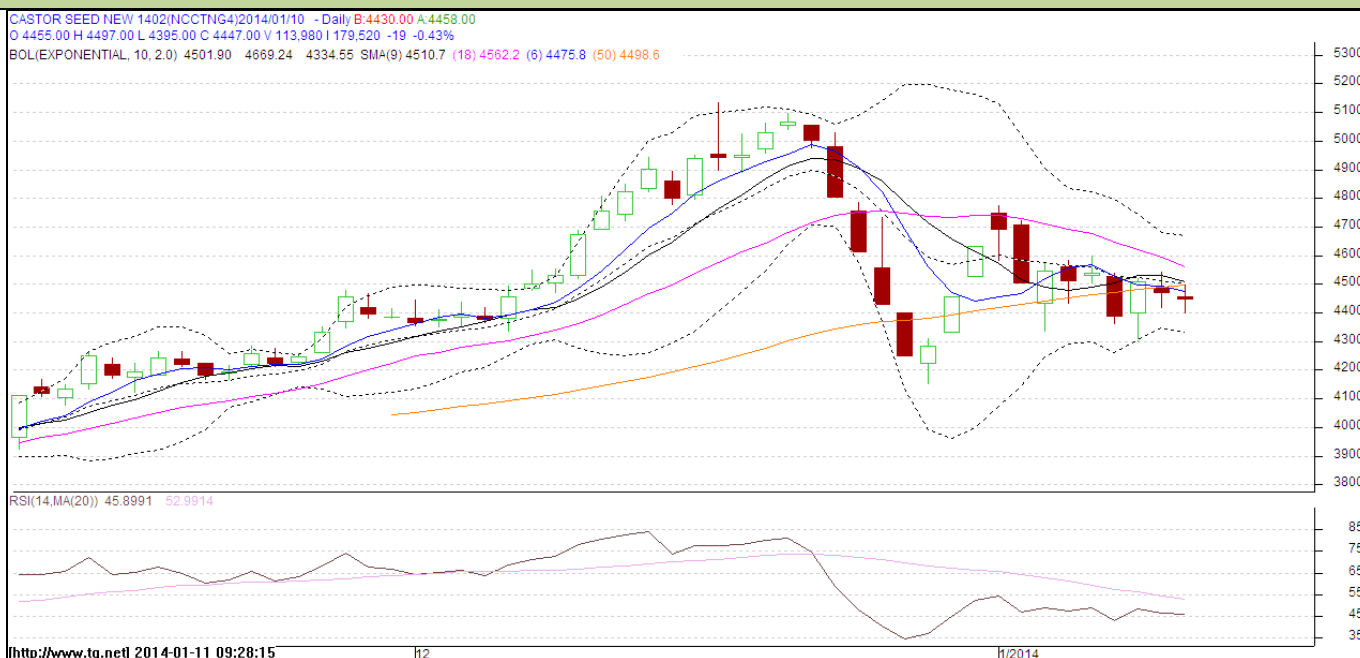


Commodity: Castor Seed
Contract: February

Exchange: NCDEX
Expiry: February 20th, 2014

Castor Seed



Technical Commentary:

- Market is trying to move in the range bound as candlesticks depicts.
- Oscillator RSI is in neutral zone.
- Prices closed below 9 days EMA and above 18 days EMA, indicating bearishness.

Strategy: Wait

| Intraday Supports & Resistances | | | S2 | S1 | PCP | R1 | R2 |
|---------------------------------|-------|-----------|------|-------|------|------|------|
| Castor Seed | NCDEX | February | 4151 | 4285 | 4447 | 4540 | 4778 |
| Intraday Trade Call* | | | Call | Entry | T1 | T2 | SL |
| Castor Seed | NCDEX | Februaury | Wait | - | - | - | - |

*Do not carry forward the position until the next day.

Disclaimer

The information and opinions contained in the document have been compiled from sources believed to be reliable. The company does not warrant its accuracy, completeness and correctness. Use of data and information contained in this report is at your own risk. This document is not, and should not be construed as, an offer to sell or solicitation to buy any commodities. This document may not be reproduced, distributed or published, in whole or in part, by any recipient hereof for any purpose without prior permission from the Company. IASL and its affiliates and/or their officers, directors and employees may have positions in any commodities mentioned in this document (or in any related investment) and may from time to time add to or dispose of any such commodities (or investment). Please see the detailed disclaimer at <http://www.agriwatch.com/Disclaimer.php> © 2013 Indian Agribusiness Systems Pvt Ltd.