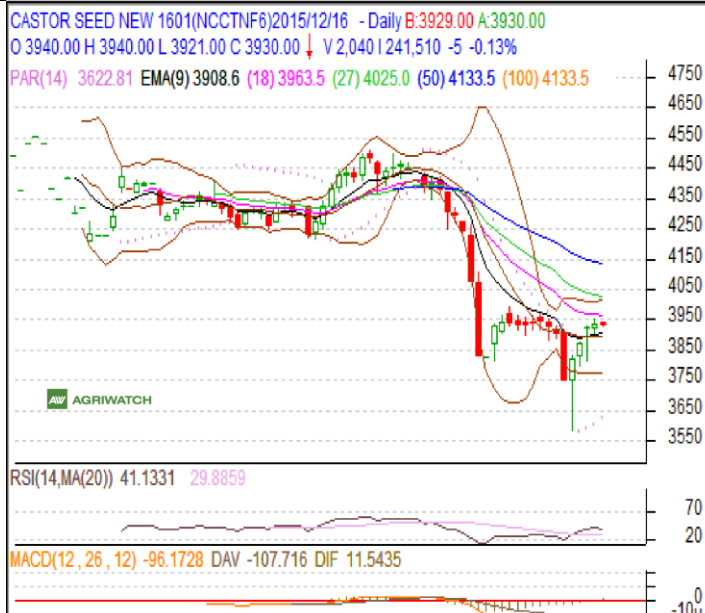


**Commodity: Castor**  
**Contract: Jan**
**Exchange: NCDEX**  
**Expiry: Jan 20<sup>th</sup>, 2015**
**Castor – Technical Outlook**
**Technical Commentary:**

- Candlestick depicts weakness in the market.
- RSI is moving down in neutral region, cautions to the bears.
- Prices closed below 9 and 18 days EMAs.
- Decrease in prices with lower volume and OI indicates short build up.

**Castor prices are likely to trade down on Wednesday's session.**


**Strategy: Sell on rise**

Intraday Supports & Resistances			S2	S1	PCP	R1	R2
Castor	NCDEX	Jan	3840	3867	3935	3955	4050
Intraday Trade Call			Call	Entry	T1	T2	SL
Castor	NCDEX	Jan	Sell on rise	3945	3900	3880	3960

\* Do not carry-forward the position next day

**Disclaimer**

The information and opinions contained in the document have been compiled from sources believed to be reliable. The company does not warrant its accuracy, completeness and correctness. Use of data and information contained in this report is at your own risk. This document is not, and should not be construed as, an offer to sell or solicitation to buy any commodities. This document June not be reproduced, distributed or published, in whole or in part, by any recipient hereof for any purpose without prior permission from the Company. IASL and its affiliates and/or their officers, directors and employees June have positions in any commodities mentioned in this document (or in any related investment) and June from time to time add to or dispose of any such commodities (or investment). Please see the detailed disclaimer at <http://www.agriwatch.com/Disclaimer.asp> © 2015 Indian Agribusiness Systems Pvt. Ltd.