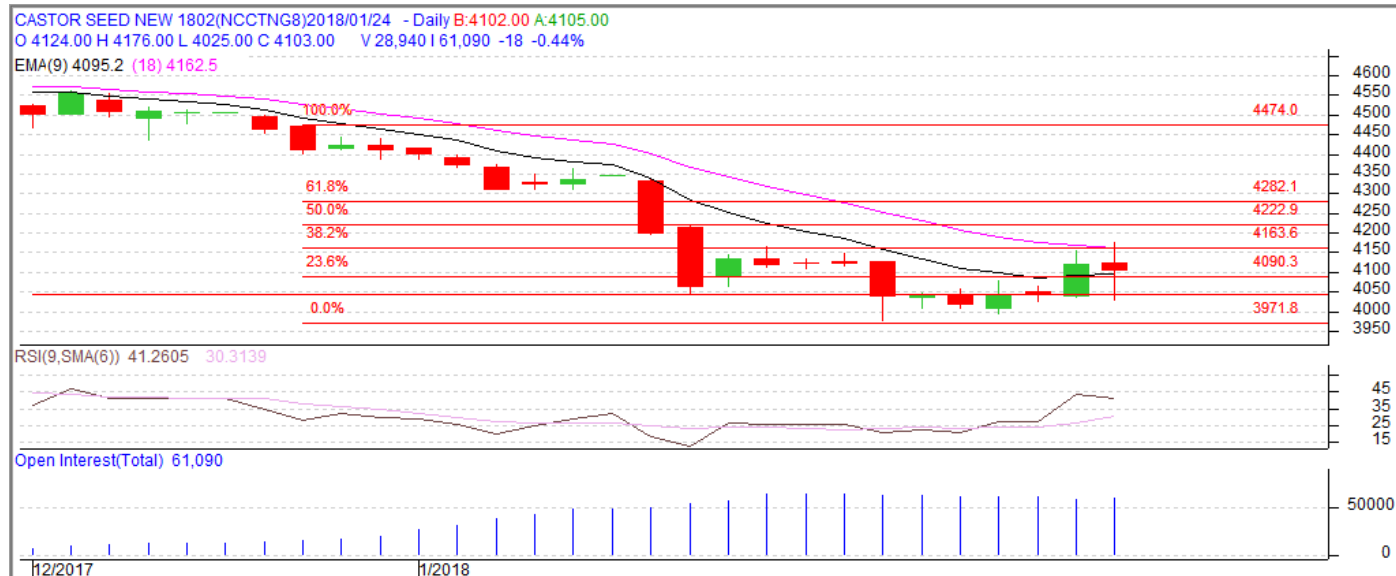


Commodity: Castor Seed  
Contract: Feb

Exchange: NCDEX  
Expiry: Feb-20, 2017

### Castor Seed



### Technical Analysis:

- Rise in price and open interest indicates long build-up.
- RSI is moving in the neutral region.
- Prices closed above 9 and 18 days EMA.

### Strategy-Wait

Intraday Supports & Resistances			S2	S1	PCP	R1	R2
Castor	NCDEX	Feb	3800	3900	4103	4324	4499
Intraday Trade Call*			Call	Entry	T1	T2	SL
Castor	NCDEX	Feb	Wait	-	-	-	-

\*Do not carry forward the position until the next day.

### Disclaimer

The information and opinions contained in the document have been compiled from sources believed to be reliable. The company does not warrant its accuracy, completeness and correctness. Use of data and information contained in this report is at your own risk. This document is not, and should not be construed as, an offer to sell or solicitation to buy any commodities. This document may not be reproduced, distributed or published, in whole or in part, by any recipient hereof for any purpose without prior permission from the Company. IASL and its affiliates and/or their officers, directors and employees may have positions in any commodities mentioned in this document (or in any related investment) and may from time to time add to or dispose of any such commodities (or investment). Please see the detailed disclaimer at <http://www.agriwatch.com/Disclaimer.php> © 2018 Indian Agribusiness Systems Pvt. Ltd.