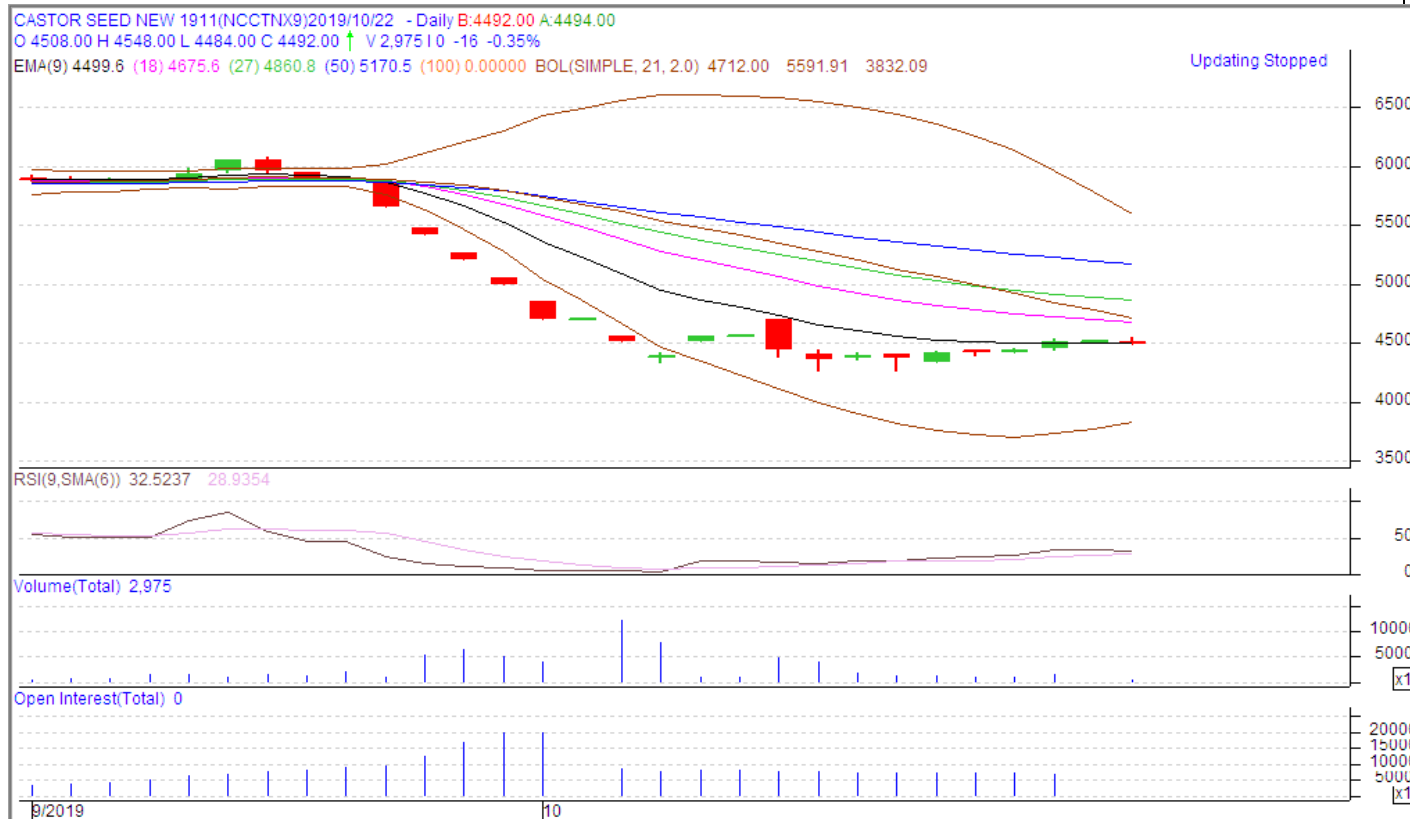


Castor Seed

Technical Analysis:

- Firmness in price and open interest indicates range bound trend in the market.
- RSI is moving above in the neutral zone.
- Prices closed above 9 and 18 days EMA.
- Last candlestick depicts steady in the market.

Strategy- Buy

Intraday Supports & Resistances			S2	S1	PCP	R1	R2
Castor	NCDEX	Nov	4267	4200	4428	4627	4727
Intraday Trade Call*			Call	Entry	T1	T2	SL
Castor	NCDEX	Nov	Buy	4425	4450	4468	4420

*Do not carry forward the position until the next day.

Disclaimer

The information and opinions contained in the document have been compiled from sources believed to be reliable. The company does not warrant its accuracy, completeness and correctness. Use of data and information contained in this report is at your own risk. This document is not, and should not be construed as, an offer to sell or solicitation to buy any commodities. This document may not be reproduced, distributed or published, in whole or in part, by any recipient hereof for any purpose without prior permission from the Company. IASL and its affiliates and/or their officers, directors and employees may have positions in any commodities mentioned in this document (or in any related investment) and may from time to time add to or dispose of any such commodities (or investment). Please see the detailed disclaimer at <http://www.agriwatch.com/Disclaimer.php> © 2019 Indian Agribusiness Systems. Ltd.