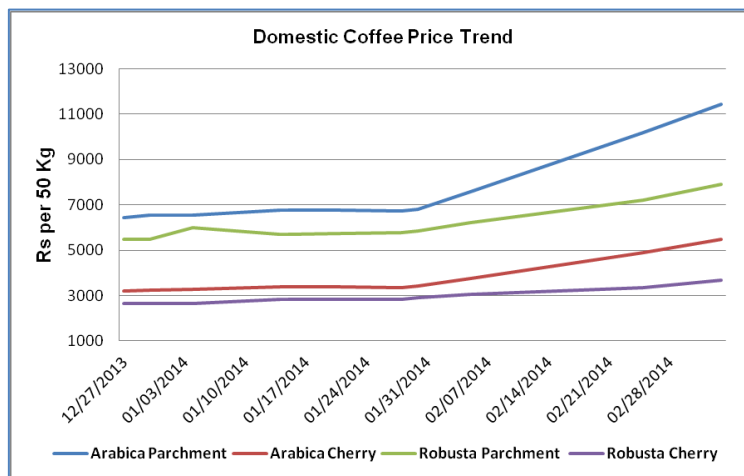


Domestic and Export Trade:



Domestic Coffee Prices

Center	Category	Price (Rs/50 Kg)		Abs. Change
		6.3.2014	25.2.2014	
Karnataka	Arabica Parchment	11700	10400	1300
	Arabica Cherry	5600	5000	600
	Robusta Parchment	8250	7350	900
	Robusta Cherry	3800	3350	450

The domestic coffee prices traded with the firm tone owing to bullish cues from the international coffee market and weak production outlook in the current season.

Arabica parchment rose 12.5% compared to 25 Feb., 2014. In Karnataka the Arabica parchment prices were quoted at around Rs 11200-11700 per 50 kg as on 06 Mar., 2014. While, Robusta parchment in Karnataka were quoted around Rs 7550-8250 per 50 Kg.

On the exports front, as per Coffee Board, India exports 62,956 tons during the January-February 2014 owing to firmness in the international market, up 15 percent from the corresponding period of last year.

Of total coffee exports from India, the shipments of Arabica rose by 35.11 per cent to 19,856 tons from 14,696 tons in the year-ago period, While, Robusta exports improved marginally by 7.2 per cent to 27,382 tons from 25,542 tons. However, re-exports declined to 4,754 tonnes from 10,495 tonnes in the corresponding period.

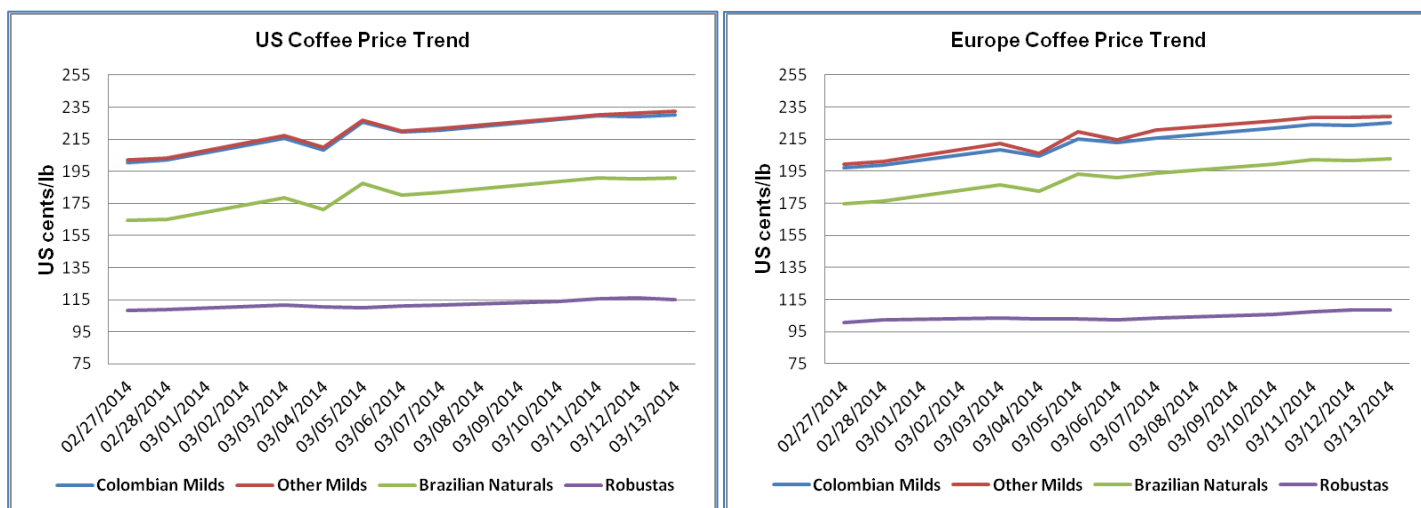
On the production front, Coffee Board pegged coffee output at 3,11,500 tons for 2013-14 crop year (October-September), down by 2.1 per cent from 3,18,200 tons in 2012-13. The coffee prices are likely to gains in the coming weeks.

International Development and Impact:

The coffee prices gained during the week in international market due to dry weather condition in Brazil and lower global production outlook. As per Vietnam Customs, Vietnam exported 184,100 tons of coffee in February, up 83.4 percent from a year ago. The exports shipment was better than expected from an initial government estimate of 160,000 tons.

As per government statistics, Vietnam's coffee exports in the Oct-Feb 2013/14 period till Feb., 2014 were 604,200 tons, down 15 percent from a year ago.

International Coffee Price Trend



Center	Market/ Category	Price (US Cents/lb)		Abs. Change
		13.3.2014	6.3.2014	
	ICO Composite Indicator	177.29	167.09	10.2
Colombian Milds	USA	230	219.5	10.5
	Europe	224.98	212.74	12.24
Other Milds	USA	232.75	220.25	12.5
	Europe	229.33	214.77	14.56
Brazilian Naturals	USA	191	180.5	10.5
	Europe	202.86	190.78	12.08
Robusta	USA	115.25	110.83	4.42
	Europe	108.72	102.08	6.64

Outlook:

The coffee prices are likely to gains in the coming weeks owing to lower global coffee production estimates and dry weather concern in Brazil.

Disclaimer

The information and opinions contained in the document have been compiled from sources believed to be reliable. The company does not warrant its accuracy, completeness and correctness. Use of data and information contained in this report is at your own risk. This document is not, and should not be construed as, an offer to sell or solicitation to buy any commodities. This document may not be reproduced, distributed or published, in whole or in part, by any recipient hereof for any purpose without prior permission from the Company. IASL and its affiliates and/or their officers, directors and employees may have positions in any commodities mentioned in this document (or in any related investment) and may from time to time add to or dispose of any such commodities (or investment). Please see the detailed disclaimer at <http://www.agriwatch.com/Disclaimer.asp>
 © 2014 Indian Agribusiness Systems Pvt Ltd.