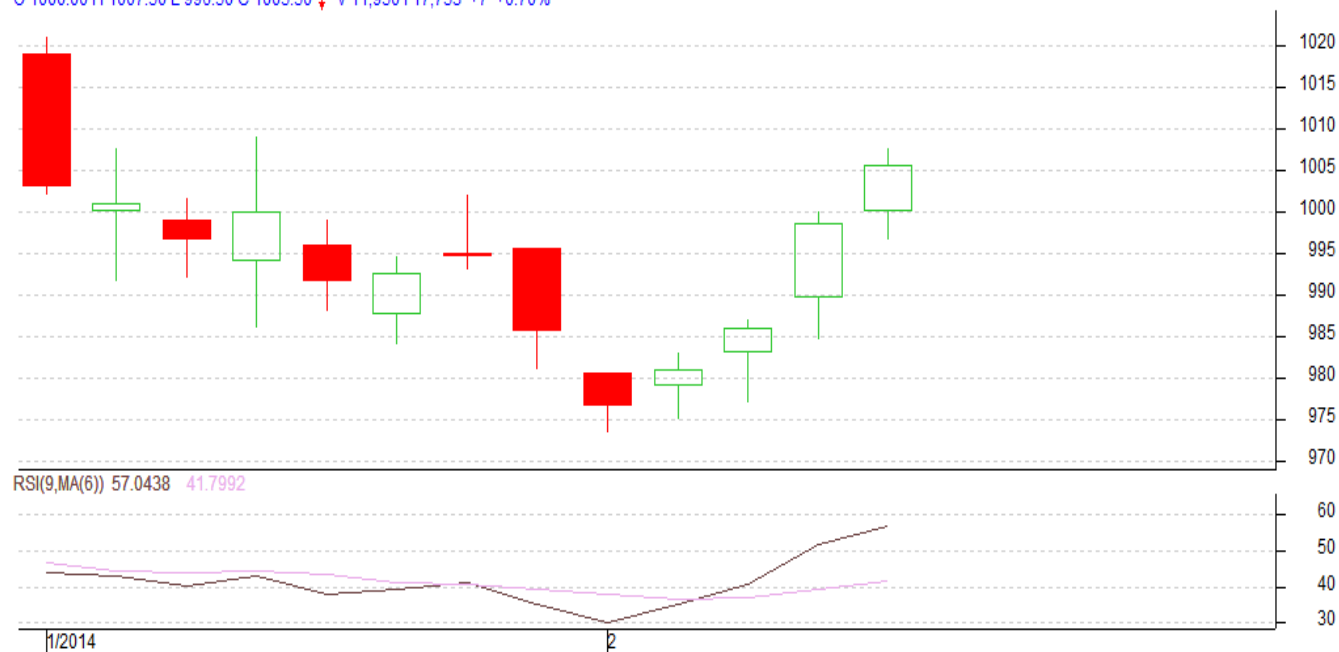


Commodity: Kapas  
Contract: April

Exchange: NCDEX  
Expiry: April 30<sup>th</sup>, 2014

## Kapas

KAPASSRNR 1404(NCKPAJ4)2014/02/06 - Daily B:1004.00 A:1007.00  
O 1000.00 H 1007.50 L 996.50 C 1005.50 ↓ V 11,950 I 17,753 +7 +0.70%



### Technical Commentary:

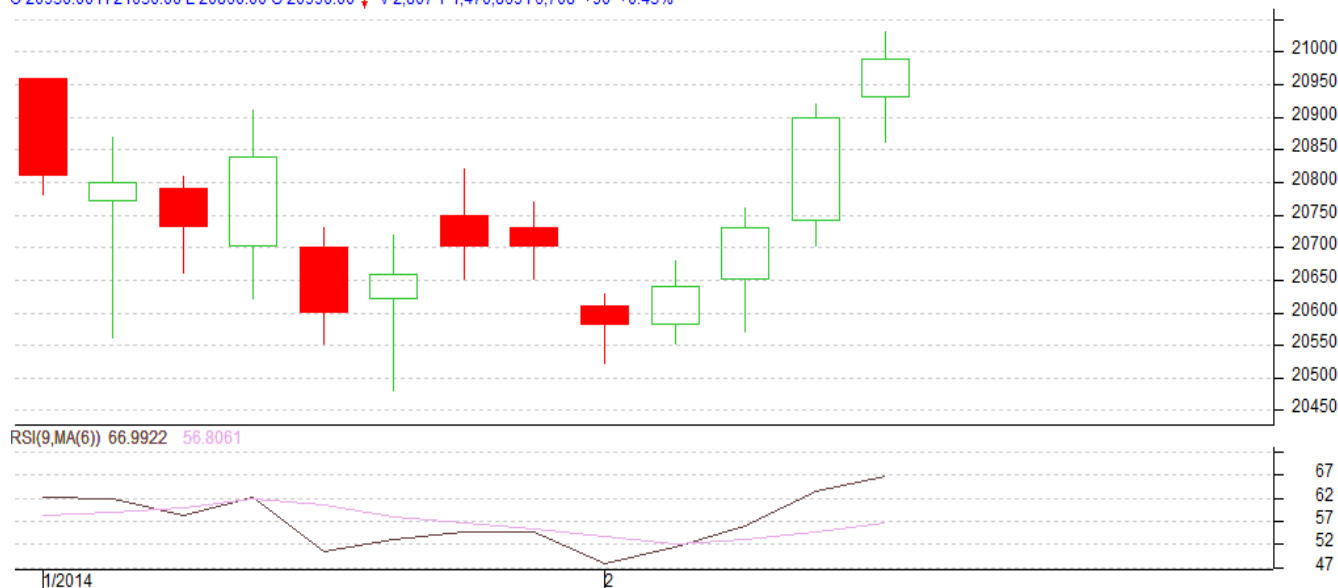
- Candlestick denotes indecision in the market.
- RSI is moving in neutral region supporting weak tone in near term.
- We advise traders to Stay Away.

### Strategy: Stay Away

Intraday Supports & Resistances			S2	S1	PCP	R1	R2
Kapas	NCDEX	April	965	970	1000.5	1040	1055
Intraday Trade Call*			Call	Entry	T1	T2	SL
Kapas	NCDEX	April	Stay Away	--	--	--	--

\*Do not carry forward the position until the next day.

**Commodity: Cotton**  
**Contract: February**
**Exchange: MCX**  
**Expiry: 27<sup>th</sup> February, 2014**
**Cotton**

 COTTON 1402(MXCTNG4)2014/02/06 - Daily B:20990.00 A:21000.00  
 O 20930.00 H 21030.00 L 20860.00 C 20990.00 ↓ V 2,807 T 1,470,869 I 6,708 +90 +0.43%

**Technical Commentary:**

- Candlestick denotes indecision in the market.
- RSI is moving in neutral region supporting weak tone in near term.
- We advise traders to Stay Away.

**Strategy: Sell**

Intraday Supports & Resistances			S2	S1	PCP	R1	R2
Cotton	MCX	February	19150	19300	20990	20950	21000
			Call	Entry	T1	T2	SL
Cotton	MCX	February	Stay Away	--	--	--	--

\*Do not carry forward the position until the next day.

**Disclaimer**

The information and opinions contained in the document have been compiled from sources believed to be reliable. The company does not warrant its accuracy, completeness and correctness. Use of data and information contained in this report is at your own risk. This document is not, and should not be construed as, an offer to sell or solicitation to buy any commodities. This document may not be reproduced, distributed or published, in whole or in part, by any recipient hereof for any purpose without prior permission from the Company. IASL and its affiliates and/or their officers, directors and employees may have positions in any commodities mentioned in this document (or in any related investment) and may from time to time add to or dispose of any such commodities (or investment). Please see the detailed disclaimer at <http://www.agriwatch.com/Disclaimer.php> © 2013 Indian Agribusiness Systems Pvt Ltd.