

Commodity: Kapas
Contract: April

Exchange: NCDEX
Expiry: April 30th, 2015

Kapas



Technical Commentary:

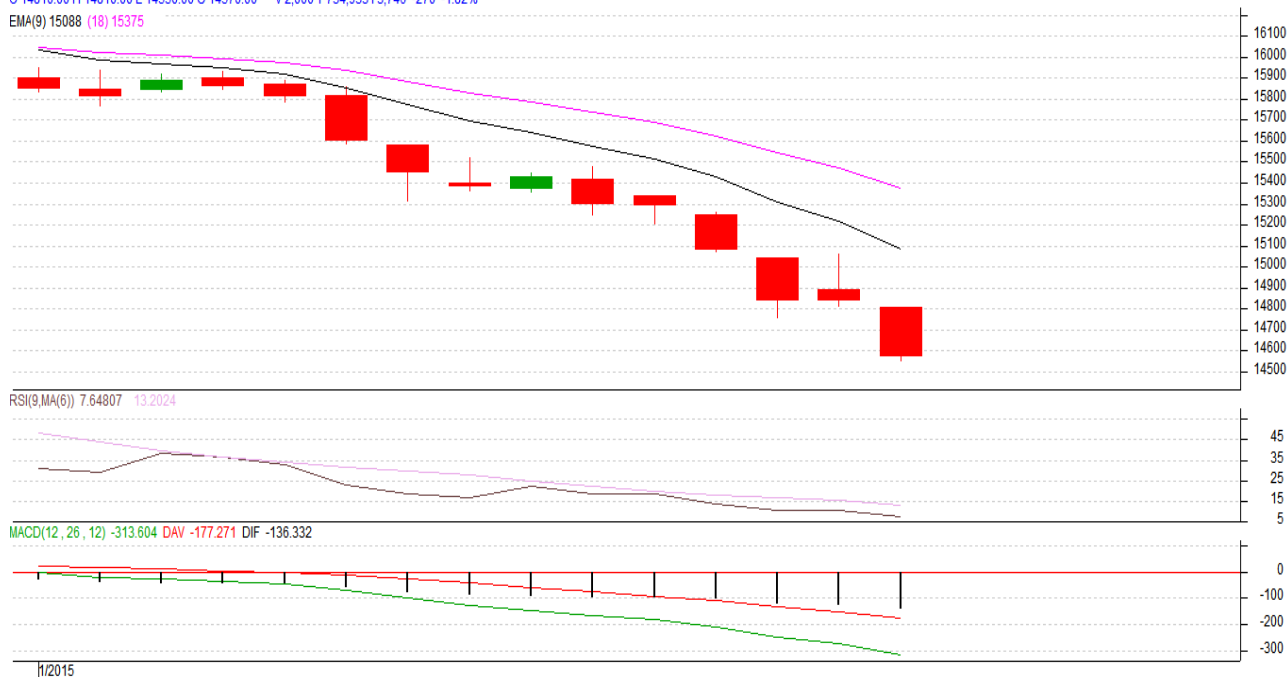
- Candlestick denotes selling interest in the market.
- Price closed below the 9 days and 18 days EMA.
- RSI is moving in oversold region.
- MACD depicts weak centerline and signal line movement.
- We advise traders to sell.

Strategy: Sell

Intraday Supports & Resistances			S2	S1	PCP	R1	R2
Kapas	NCDEX	April	700	735	747	810	825
Intraday Trade Call*			Call	Entry	T1	T2	SL
Kapas	NCDEX	April	Sell	< 750	745	742	753

*Do not carry forward the position until the next day.

Commodity: Cotton
Contract: February
Exchange: MCX
Expiry: 27 February, 2015
Cotton

 COTTON 1502(MXCTNG5)2015/01/21 - Daily B:14510.00 A:14520.00
 O 14810.00 H 14810.00 L 14550.00 C 14570.00 V 2,000 T 734,933 I 3,746 -270 -1.82%
 EMA(9) 15088 (18) 15375

Technical Commentary:

- Candlestick denotes selling interest in the market.
- Price closed below the 9 days and 18 days EMA.
- RSI is moving low in oversold region.
- MACD depicts weak centerline and signal line movement.
- We advise traders to sell.

Strategy: Sell

Intraday Supports & Resistances			S2	S1	PCP	R1	R2
Cotton	MCX	February	14000	14250	14570	15500	15650
			Call	Entry	T1	T2	SL
Cotton	MCX	February	Sell	< 14620	14550	14520	14660

*Do not carry forward the position until the next day.

Disclaimer

The information and opinions contained in the document have been compiled from sources believed to be reliable. The company does not warrant its accuracy, completeness and correctness. Use of data and information contained in this report is at your own risk. This document is not, and should not be construed as, an offer to sell or solicitation to buy any commodities. This document may not be reproduced, distributed or published, in whole or in part, by any recipient hereof for any purpose without prior permission from the Company. IASL and its affiliates and/or their officers, directors and employees may have positions in any commodities mentioned in this document (or in any related investment) and may from time to time add to or dispose of any such commodities (or investment). Please see the detailed disclaimer at <http://www.agriwatch.com/Disclaimer.php> © 2015 Indian Agribusiness Systems Pvt Ltd.