

Commodity: Kapas
Contract: April
Exchange: NCDEX
Expiry: April 30th, 2015
Kapas

 KAPASSRNR 1504(NCKPAJ5)2015/01/28 - Daily B:721.50 A:732.50
 O 727.50 H 733.00 L 721.50 C 727.50 V 7,031 I 12,764 -0.5 -0.07%
 EMA(9) 738.80 (18) 755.11

Technical Commentary:

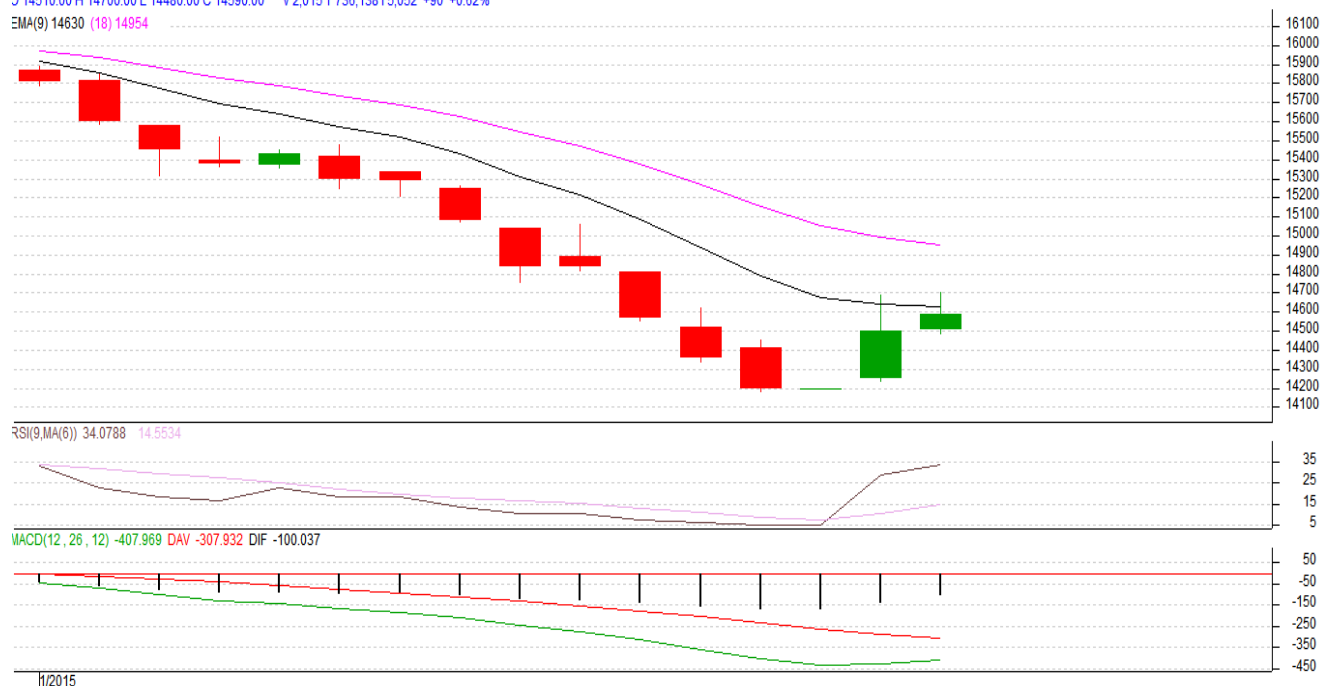
- Candlestick denotes overall selling interest in the market.
- RSI is moving in oversold region.
- Price closed below the 9 and 18 days EMA.
- MACD depicts weak centerline and signal line movement.
- We advise traders to sell.

Strategy: Sell

Intraday Supports & Resistances			S2	S1	PCP	R1	R2
Kapas	NCDEX	April	685	700	727.5	745	755
Intraday Trade Call*			Call	Entry	T1	T2	SL
Kapas	NCDEX	April	Sell	< 730	723	720	734

*Do not carry forward the position until the next day.

Commodity: Cotton
Contract: February
Exchange: MCX
Expiry: 27 February, 2015
Cotton

 COTTON 1502(MXCTNG5)2015/01/28 - Daily B:14570.00 A:14590.00
 O 14510.00 H 14700.00 L 14480.00 C 14590.00 V 2,015 T 736,138 I 5,052 +90 +0.62%
 EMA(9) 14630 (18) 14954

Technical Commentary:

- Candlestick denotes recovery in the market.
- RSI is moving high in neutral region.
- Price closed below the 9 and 18 days EMA.
- MACD depicts weak centerline movement.
- We advise traders to stay away.

Strategy: Stay Away

Intraday Supports & Resistances			S2	S1	PCP	R1	R2
Cotton	MCX	February	13850	14000	14590	14800	15000
			Call	Entry	T1	T2	SL
Cotton	MCX	February	Stay Away	--	--	--	--

*Do not carry forward the position until the next day.

Disclaimer

The information and opinions contained in the document have been compiled from sources believed to be reliable. The company does not warrant its accuracy, completeness and correctness. Use of data and information contained in this report is at your own risk. This document is not, and should not be construed as, an offer to sell or solicitation to buy any commodities. This document may not be reproduced, distributed or published, in whole or in part, by any recipient hereof for any purpose without prior permission from the Company. IASL and its affiliates and/or their officers, directors and employees may have positions in any commodities mentioned in this document (or in any related investment) and may from time to time add to or dispose of any such commodities (or investment). Please see the detailed disclaimer at <http://www.agriwatch.com/Disclaimer.php> © 2015 Indian Agribusiness Systems Pvt Ltd.