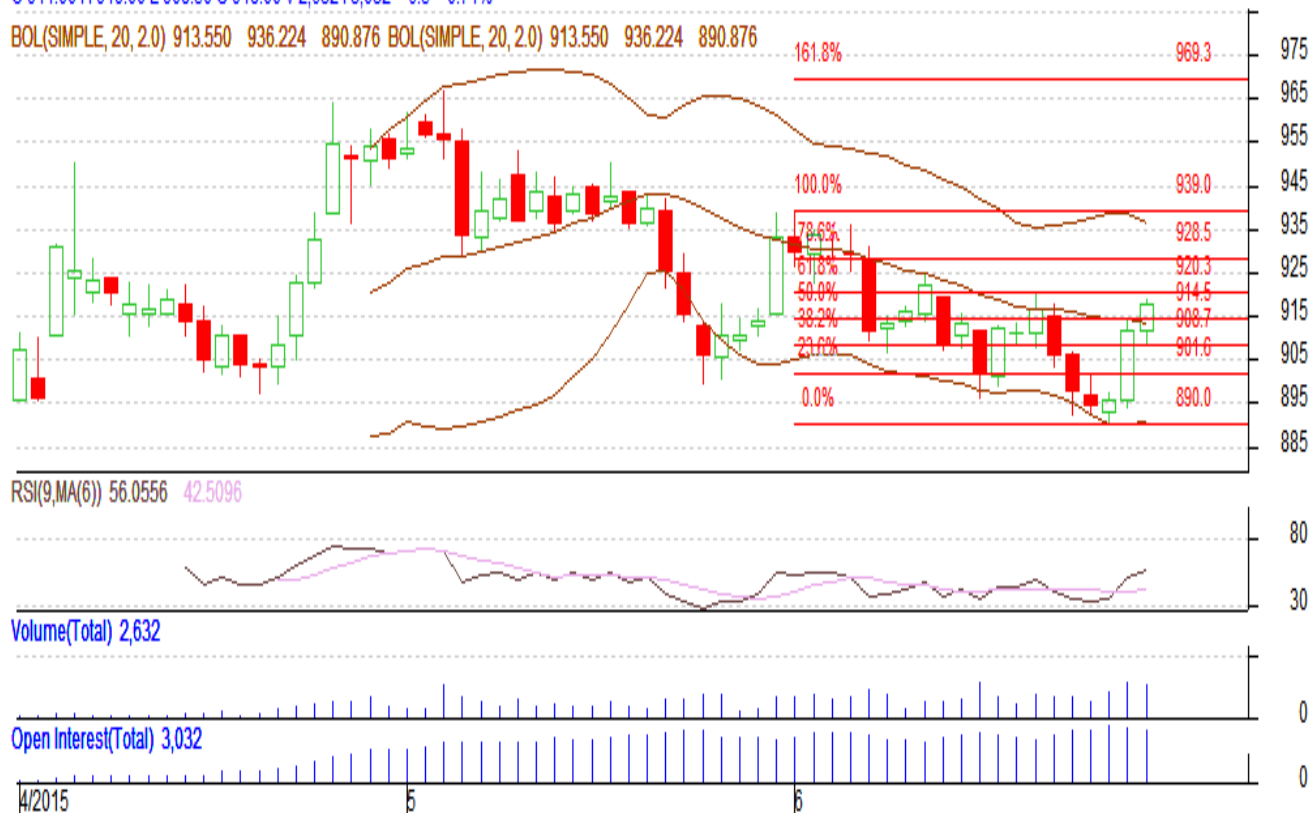


**Commodity: Kapas**  
**Contract: April**
**Exchange: NCDEX**  
**Expiry: April 29<sup>th</sup>, 2016**
**Kapas**

KAPASSRNR 1604(NCKPAJ6)2015/06/26 - Daily B:919.00 A:919.50

O 911.00 H 919.00 L 908.50 C 918.00 V 2,632 I 3,032 +6.5 +0.71%

BOL(SIMPLE, 20, 2.0) 913.550 936.224 890.876 BOL(SIMPLE, 20, 2.0) 913.550 936.224 890.876


**Technical Commentary:**

- Candlestick denotes upward movement in the market.
- RSI is moving high in neutral region.
- Rise in price and fall in O.I. and volume indicates weak market.

**Strategy : Sell**

Intraday Supports & Resistances			S1	S2	PCP	R1	R2
Kapas	NCDEX	April	895	875	918	935	950
Intraday Trade Call*			Call	Entry	T1	T2	SL
Kapas	NCDEX	April	<b>Sell</b>	921	915	912	924.5

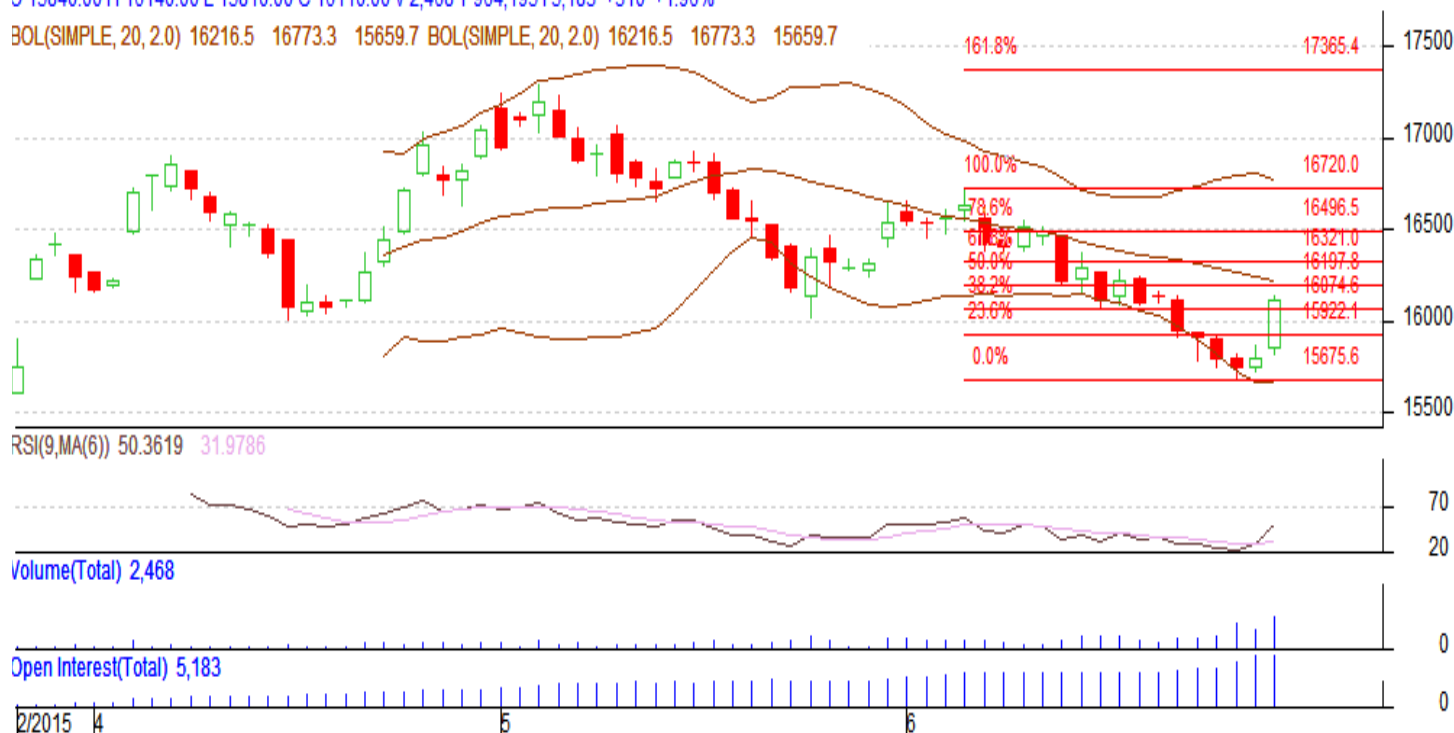
\*Do not carry forward the position until the next day.

**Commodity: Cotton**  
**Contract: July**
**Exchange: MCX**  
**Expiry: 31<sup>st</sup> July, 2015**
**Cotton**

COTTON 1507(MXCTNN5)2015/06/26 - Daily B:16070.00 A:16200.00

O 15840.00 H 16140.00 L 15810.00 C 16110.00 V 2,468 T 964,195 I 5,183 +310 +1.96%

BOL(SIMPLE, 20, 2.0) 16216.5 16773.3 15659.7 BOL(SIMPLE, 20, 2.0) 16216.5 16773.3 15659.7


**Technical Commentary:**

- Candlestick denotes upward movement in the market.
- RSI is moving up near oversold region.
- Rise in price and rise in O.I. and volume indicates long buildup

**Strategy: Sell**

Intraday Supports & Resistances			S1	S2	PCP	R1	R2
Cotton	MCX	July	15675	15500	16110	16500	16600
Intraday Trade Call*			Call	Entry	T1	T2	SL
Cotton	MCX	July	<b>Sell</b>	16200	16000	15900	16315

\*Do not carry forward the position until the next day.

**Disclaimer**

The information and opinions contained in the document have been compiled from sources believed to be reliable. The company does not warrant its accuracy, completeness and correctness. Use of data and information contained in this report is at your own risk. This document is not, and should not be construed as, an offer to sell or solicitation to buy any commodities. This document may not be reproduced, distributed or published, in whole or in part, by any recipient hereof for any purpose without prior permission from the Company. IASL and its affiliates and/or their officers, directors and employees may have positions in any commodities mentioned in this document (or in any related investment) and may from time to time add to or dispose of any such commodities (or investment). Please see the detailed disclaimer at <http://www.agriwatch.com/Disclaimer.php> © 2015 Indian Agribusiness Systems Pvt Ltd.