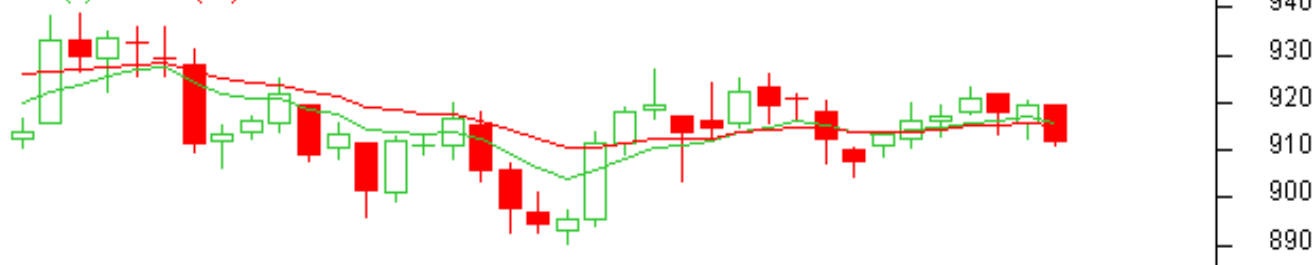


**Commodity: Kapas**  
**Contract: April**
**Exchange: NCDEX**  
**Expiry: April 29<sup>th</sup>, 2015**
**Kapas**

KAPASSRNR 1604(NCKPAJ6)2015/07/17 - Daily B:911.000 A:912.500

O 919.50 H 919.50 L 910.50 C 911.50 ↓ V 1,264 I 2,834 -8 -0.87%

EMA(9) 915.80 (18) 915.25



SStk(9, 3, 3) 60.8333

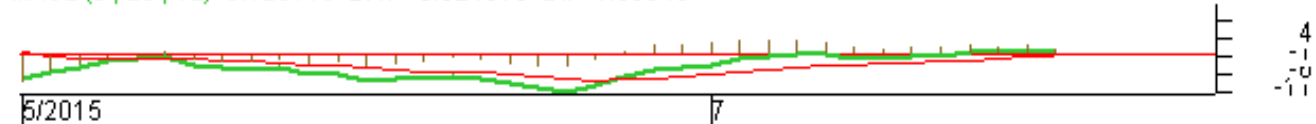
SStJ 49.3278



RSI(14, MA(7)) 46.9943



MACD(9, 28, 12) 0.129115 DAV -0.924316 DIF 1.05343


**Technical Commentary:**

- Candlestick denotes selling interest in the market.
- RSI is moving low in neutral region.
- Prices closed below the 9 and 18 days EMA.
- MACD denotes weak signal line centerline movement.
- We advise traders to sell.

**Strategy : Sell**

Intraday Supports & Resistances			S2	S1	PCP	R1	R2
Kapas	NCDEX	April	875	890	911.5	930	945
Intraday Trade Call*			Call	Entry	T1	T2	SL
Kapas	NCDEX	April	<b>Sell</b>	< 912	905	903	916

\*Do not carry forward the position until the next day.

**Commodity: Cotton**  
**Contract: October**
**Exchange: MCX**  
**Expiry: 30<sup>th</sup> October, 2015**
**Cotton**

**Technical Commentary:**

- Candlestick denotes selling interest in the market.
- RSI is moving low in neutral region.
- Prices closed below the 9 and 18 days EMA.
- MACD denotes weak signal line centerline movement.
- We advise traders to sell.

**Strategy: Sell**

Intraday Supports & Resistances			S2	S1	PCP	R1	R2
Cotton	MCX	October	16000	16100	16580	16750	16800
			Call	Entry	T1	T2	SL
Cotton	MCX	October	<b>Sell</b>	< 16600	16500	16450	16660

\*Do not carry forward the position until the next day.

**Disclaimer**

The information and opinions contained in the document have been compiled from sources believed to be reliable. The company does not warrant its accuracy, completeness and correctness. Use of data and information contained in this report is at your own risk. This document is not, and should not be construed as, an offer to sell or solicitation to buy any commodities. This document may not be reproduced, distributed or published, in whole or in part, by any recipient hereof for any purpose without prior permission from the Company. IASL and its affiliates and/or their officers, directors and employees may have positions in any commodities mentioned in this document (or in any related investment) and may from time to time add to or dispose of any such commodities (or investment). Please see the detailed disclaimer at <http://www.agriwatch.com/Disclaimer.php> © 2015 Indian Agribusiness Systems Pvt Ltd.