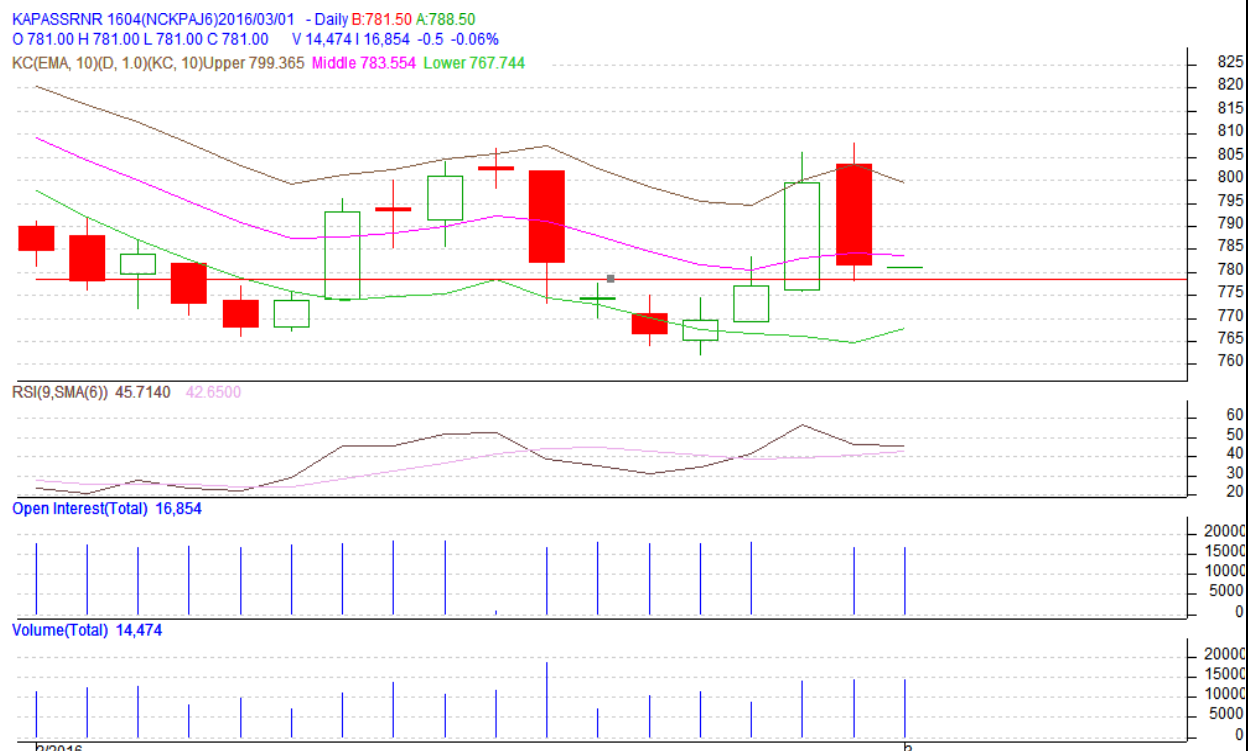


Commodity: Kapas
Contract: April
Exchange: NCDEX
Expiry: April 29th, 2016
Kapas

Technical Commentary:

- Candlestick denotes buying interest in the prices.
- RSI is moving high in neutral region.
- Price closed above the 9 and 18 days EMA.
- MACD signal line and center line denotes bullish crossover.
- We advise traders to buy on dips.

Strategy : Buy

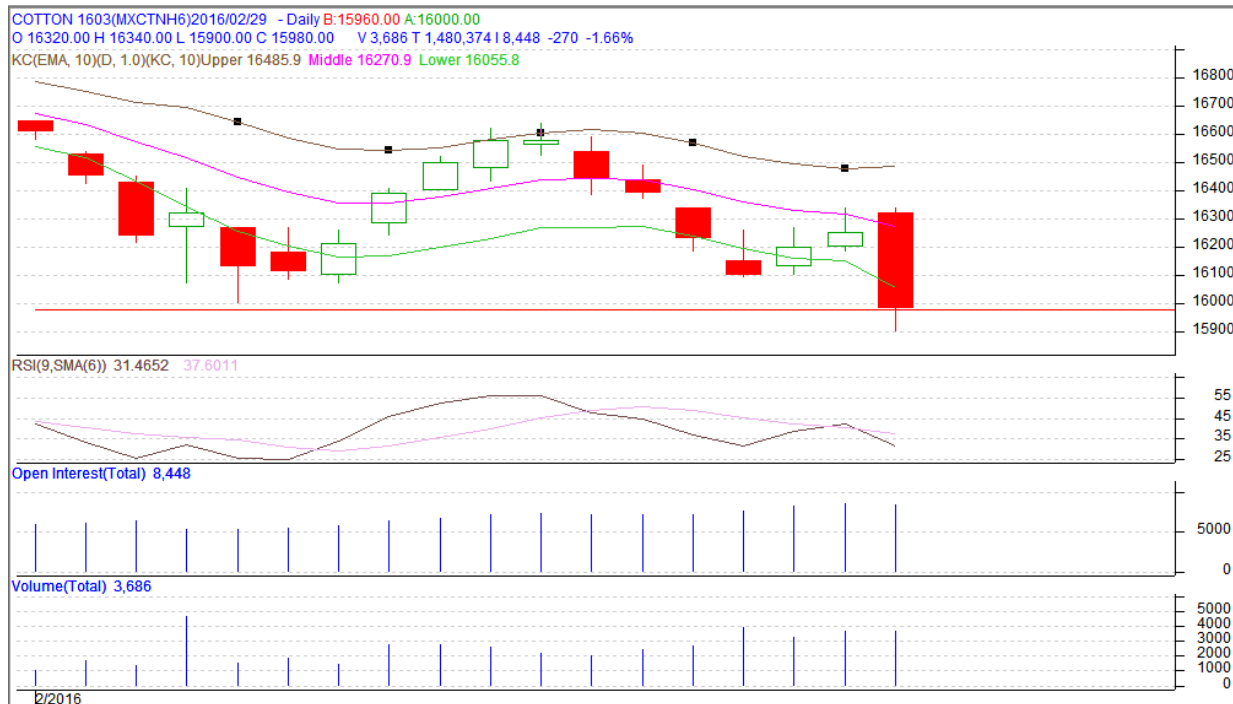
| Intraday Supports & Resistances | | | S1 | S2 | PCP | R1 | R2 |
|---------------------------------|-------|-------|------|-------|-------|-----|-----|
| Kapas | NCDEX | April | 767 | 750 | 781.5 | 820 | 835 |
| Intraday Trade Call* | | | Call | Entry | T1 | T2 | SL |
| Kapas | NCDEX | April | Buy | >780 | 792 | 800 | 776 |

*Do not carry forward the position until the next day.

Commodity: Cotton
Contract: March

Exchange: MCX
Expiry: 31st March, 2016

Cotton



Technical Commentary:

- Candlestick denotes buying interest in the prices from last couple of Days.
- RSI is moving near the oversold region.
- Price closed below Keltner Channel.
- We advise traders to buy on dips.

Strategy: Buy

| Intraday Supports & Resistances | | | S1 | S2 | PCP | R1 | R2 |
|---------------------------------|-----|-------|-------|--------|-------|-------|-------|
| Cotton | MCX | March | 15850 | 15700 | 15980 | 16450 | 16600 |
| Intraday Trade Call* | | | Call | Entry | T1 | T2 | SL |
| Cotton | MCX | March | Buy | >16056 | 16205 | 16250 | 15976 |

*Do not carry forward the position until the next day.

Disclaimer

The information and opinions contained in the document have been compiled from sources believed to be reliable. The company does not warrant its accuracy, completeness and correctness. Use of data and information contained in this report is at your own risk. This document is not, and should not be construed as, an offer to sell or solicitation to buy any commodities. This document may not be reproduced, distributed or published, in whole or in part, by any recipient hereof for any purpose without prior permission from the Company. IASL and its affiliates and/or their officers, directors and employees may have positions in any commodities mentioned in this document (or in any related investment) and may from time to time add to or dispose of any such commodities (or investment). Please see the detailed disclaimer at <http://www.agriwatch.com/Disclaimer.php> © 2016 Indian Agribusiness Systems Pvt Ltd.