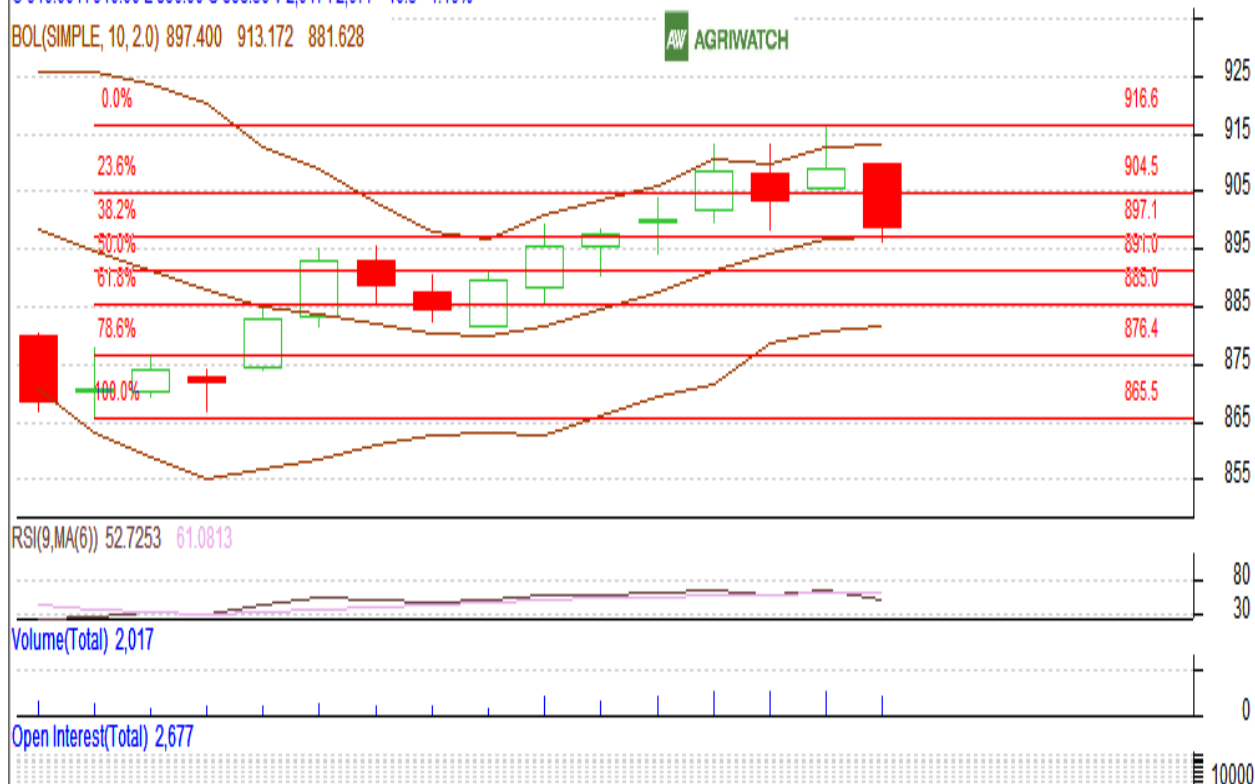


**Commodity: Kapas**  
**Contract: April**
**Exchange: NCDEX**  
**Expiry: April 29<sup>th</sup>, 2017**
**Kapas**

KAPASSRNR 1704(NCKPAJ7)2016/05/31 - Daily B:897.50 A:899.00

O 910.00 H 910.00 L 896.00 C 898.50 V 2,017 I 2,677 -10.5 -1.16%

BOL(SIMPLE, 10, 2.0) 897.400 913.172 881.628

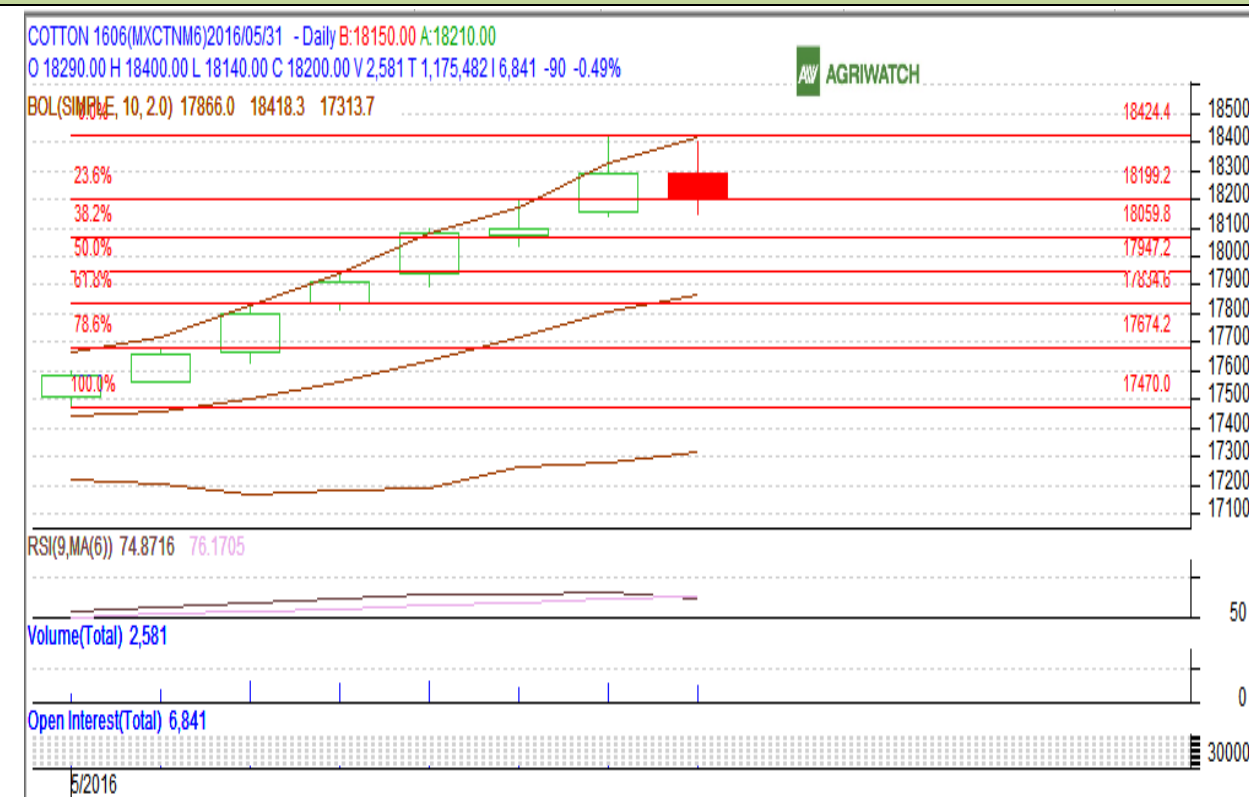

**Technical Commentary:**

- Candlesticks denote range bound movement in the market.
- RSI is moving down in neutral region.
- Fall in prices and fall in OI and volume indicates consolidation.

**Strategy : Buy**

Intraday Supports & Resistances			S1	S2	PCP	R1	R2
Kapas	NCDEX	April	885	875	898.5	913	920
Intraday Trade Call*			Call	Entry	T1	T2	SL
Kapas	NCDEX	April	Buy	896	902	904	892.5

\*Do not carry forward the position until the next day.

**Commodity: Cotton**  
**Contract: June**
**Exchange: MCX**  
**Expiry: 30<sup>th</sup> June, 2016**
**Cotton**

**Technical Commentary:**

- Candlestick denotes range bound movement in the market.
- RSI is moving slightly down in overbought region.
- Fall in prices and rise in OI indicates short buildup.

**Strategy: Buy at Dips**

Intraday Supports & Resistances			S1	S2	PCP	R1	R2
Cotton	MCX	June	17950	17850	18200	18450	18600
Intraday Trade Call*			Call	Entry	T1	T2	SL
Cotton	MCX	June	Buy	18140	18250	18280	18075

\*Do not carry forward the position until the next day.

**Disclaimer**

The information and opinions contained in the document have been compiled from sources believed to be reliable. The company does not warrant its accuracy, completeness and correctness. Use of data and information contained in this report is at your own risk. This document is not, and should not be construed as, an offer to sell or solicitation to buy any commodities. This document may not be reproduced, distributed or published, in whole or in part, by any recipient hereof for any purpose without prior permission from the Company. IASL and its affiliates and/or their officers, directors and employees may have positions in any commodities mentioned in this document (or in any related investment) and may from time to time add to or dispose of any such commodities (or investment). Please see the detailed disclaimer at <http://www.agriwatch.com/Disclaimer.php> © 2016 Indian Agribusiness Systems Pvt Ltd.