

Commodity: Kapas
Contract: April
Exchange: NCDEX
Expiry: April 29th, 2017
Kapas

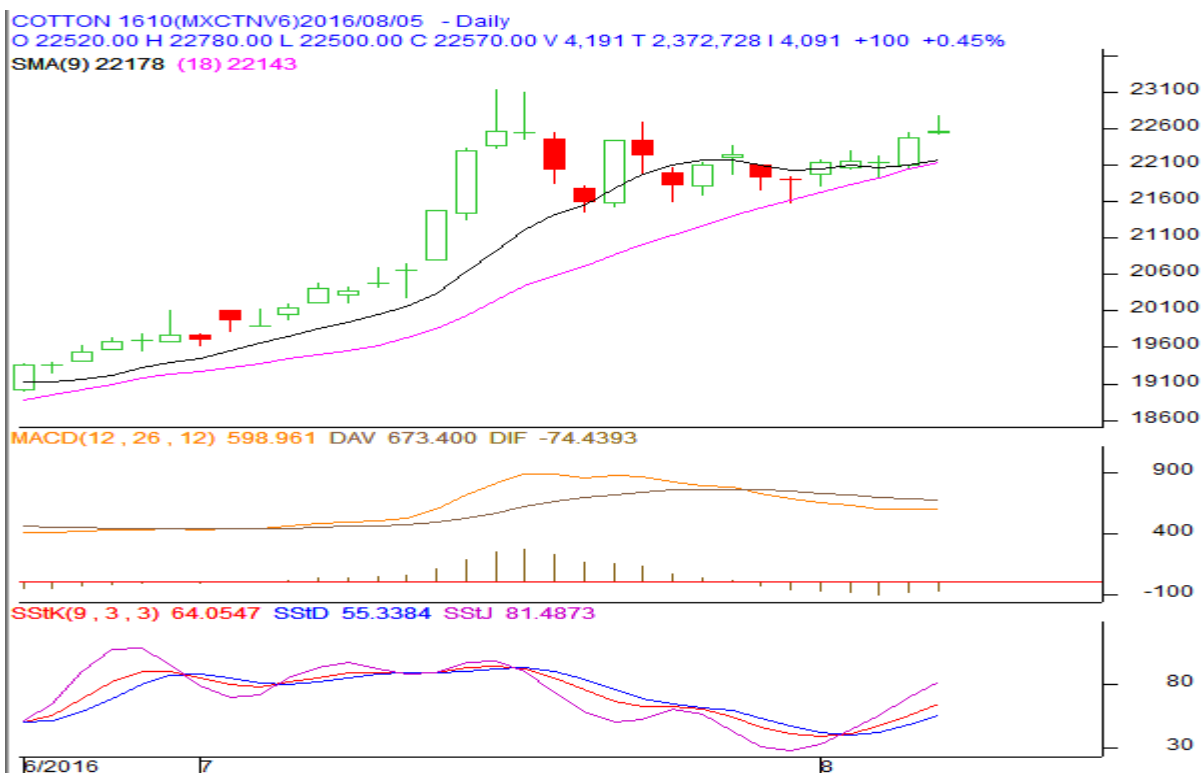
Technical Commentary:

- Candlestick denotes selling interest in the market.
- RSI is declining in the neutral region.
- Price closed in between 9 and 18 days EMA.
- We advise traders to sell for today.

Strategy : Sell

Intraday Supports & Resistances			S1	S2	PCP	R1	R2
Kapas	NCDEX	April	1000	950	1019	1050	1100
Intraday Trade Call*			Call	Entry	T1	T2	SL
Kapas	NCDEX	April	Sell	<1025	1018	1014	1029

*Do not carry forward the position until the next day.

Commodity: Cotton
Contract: October
Exchange: MCX
Expiry: 31st October, 2016
Cotton

Technical Commentary:

- Candlestick denotes buying interest in the market.
- Stochastic oscillator is increasing in the neutral region.
- Prices closed above 9 and 18 days EMA.
- We advise traders to buy.

Strategy: Buy

Intraday Supports & Resistances			S1	S2	PCP	R1	R2
Cotton	MCX	October	22000	21500	22570	23000	23500
Intraday Trade Call*			Call	Entry	T1	T2	SL
Cotton	MCX	October	Buy	>22540	22610	22650	22500

*Do not carry forward the position until the next day.

Disclaimer

The information and opinions contained in the document have been compiled from sources believed to be reliable. The company does not warrant its accuracy, completeness and correctness. Use of data and information contained in this report is at your own risk. This document is not, and should not be construed as, an offer to sell or solicitation to buy any commodities. This document may not be reproduced, distributed or published, in whole or in part, by any recipient hereof for any purpose without prior permission from the Company. IASL and its affiliates and/or their officers, directors and employees may have positions in any commodities mentioned in this document (or in any related investment) and may from time to time add to or dispose of any such commodities (or investment). Please see the detailed disclaimer at <http://www.agriwatch.com/Disclaimer.php> © 2016 Indian Agribusiness Systems Pvt Ltd.