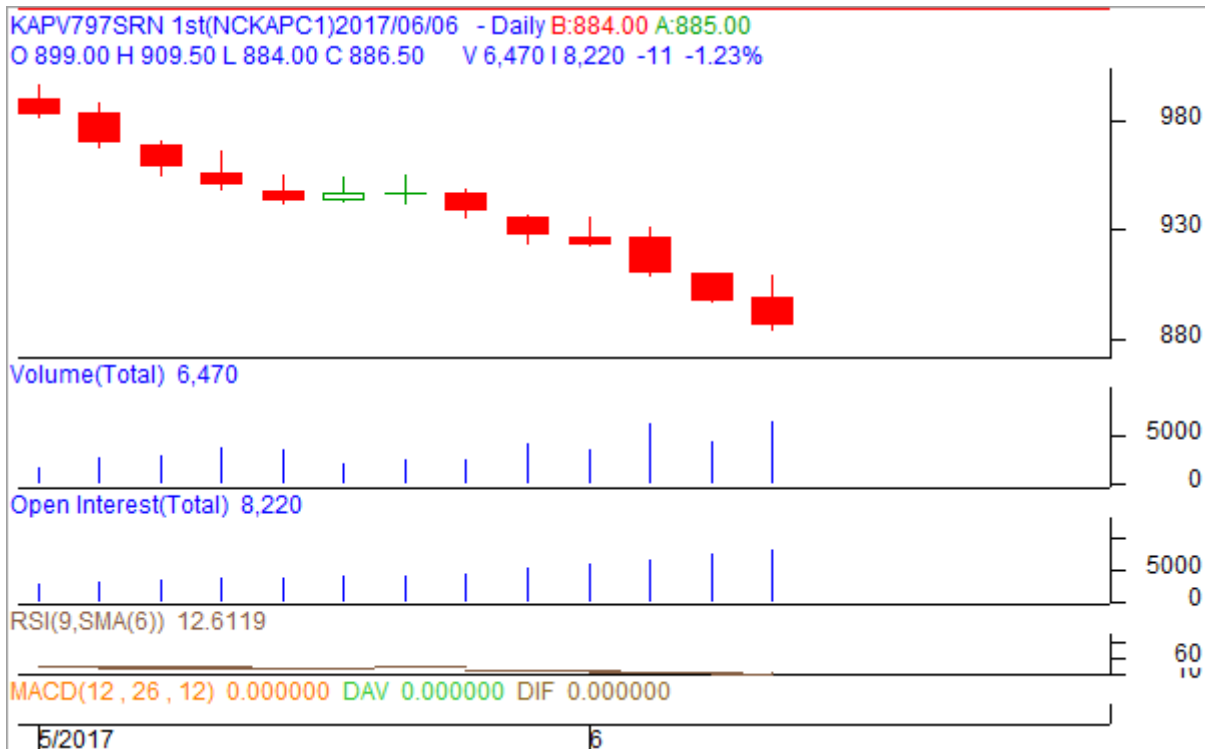


Commodity: Kapas
Contract: Continuous Chart (C1)

Exchange: NCDEX

Kapas



Technical Commentary:

- Kapas prices decreased while volume and O.I increased for the day.
- RSI is hovering in over bought zone.
- MACD signal line and center line denotes neutral crossover.

Strategy : Sell

Intraday Supports & Resistances			S1	S2	PCP	R1	R2
Kapas	NCDEX	C1 Chart	850	800	886.5	1050	1100
Intraday Trade Call*			Call	Entry	T1	T2	SL
Kapas	NCDEX	C1 Chart	Sell	Below 887	880	876	891

*Do not carry forward the position until the next day.

Commodity: Cotton
Contract: June

Exchange: MCX
Expiry: 30th Jun, 2017

Cotton

Technical Commentary:

- Cotton prices and O.I decreased while volume increased for the day.
- RSI is hovering in over bought zone.
- MACD signal line and center line denotes bearish crossover.

Strategy: Sell

Intraday Supports & Resistances			S1	S2	PCP	R1	R2
Cotton	MCX	Jun	20400	20300	20660	21500	22000
Intraday Trade Call*			Call	Entry	T1	T2	SL
Cotton	MCX	Jun	Sell	Below 20670	20600	20560	20710

*Do not carry forward the position until the next day.

Disclaimer

The information and opinions contained in the document have been compiled from sources believed to be reliable. The company does not warrant its accuracy, completeness and correctness. Use of data and information contained in this report is at your own risk. This document is not, and should not be construed as, an offer to sell or solicitation to buy any commodities. This document may not be reproduced, distributed or published, in whole or in part, by any recipient hereof for any purpose without prior permission from the Company. IASL and its affiliates and/or their officers, directors and employees may have positions in any commodities mentioned in this document (or in any related investment) and may from time to time add to or dispose of any such commodities (or investment). Please see the detailed disclaimer at <http://www.agriwatch.com/Disclaimer.php> © 2017 Indian Agribusiness Systems Pvt Ltd.