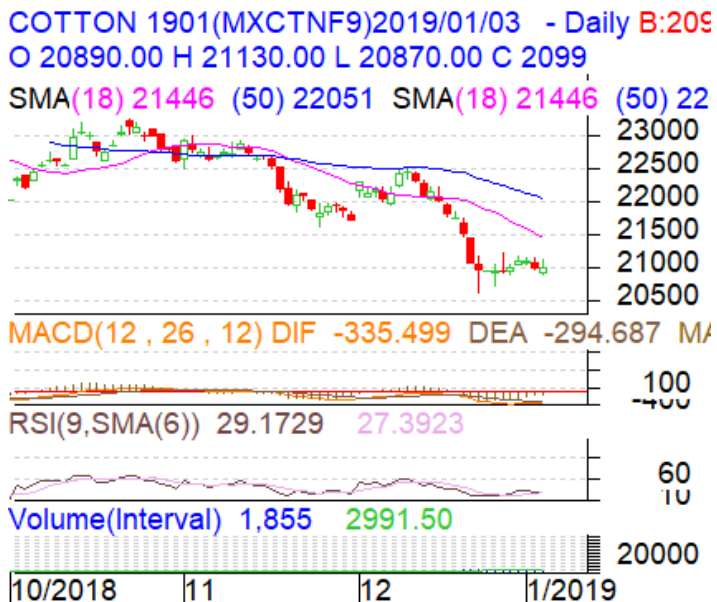


Commodity: Cotton
Contract: JAN
Exchange: MCX
Expiry: Jan 31, 2018
Cotton
Technical Commentary:

- Candlestick pattern of daily chart shows bearish movement in the market on low selling pressures.
- Low prices and high volume indicate short build up phase of the market.
- 9 day EMA and 18 day EMA are also moving down.
- Oscillator like RSI fell and indicates further fall in the market.
- We will advise traders to sell today.


Strategy: Buy

Intraday Supports & Resistances			S2	S1	PCP	R1	R2
Cotton	MCX	JAN	20600	20700	20990	21700	21800
Intraday Trade Call			Call	Entry	T1	T2	SL
Cotton	MCX	JAN	Buy	21000	21200	21300	20880

* Do not carry-forward the position next day.

Disclaimer

The information and opinions contained in the document have been compiled from sources believed to be reliable. The company does not warrant its accuracy, completeness and correctness. Use of data and information contained in this report is at your own risk. This document is not, and should not be construed as, an offer to sell or solicitation to buy any commodities. This document may not be reproduced, distributed or published, in whole or in part, by any recipient hereof for any purpose without prior permission from the Company. IASL and its affiliates and/or their officers, directors and employees may have positions in any commodities mentioned in this document (or in any related investment) and may from time to time add to or dispose of any such commodities (or investment). Please see the detailed disclaimer at <http://www.agriwatch.com/Disclaimer.asp>
 © 2018 Indian Agribusiness Systems Ltd.