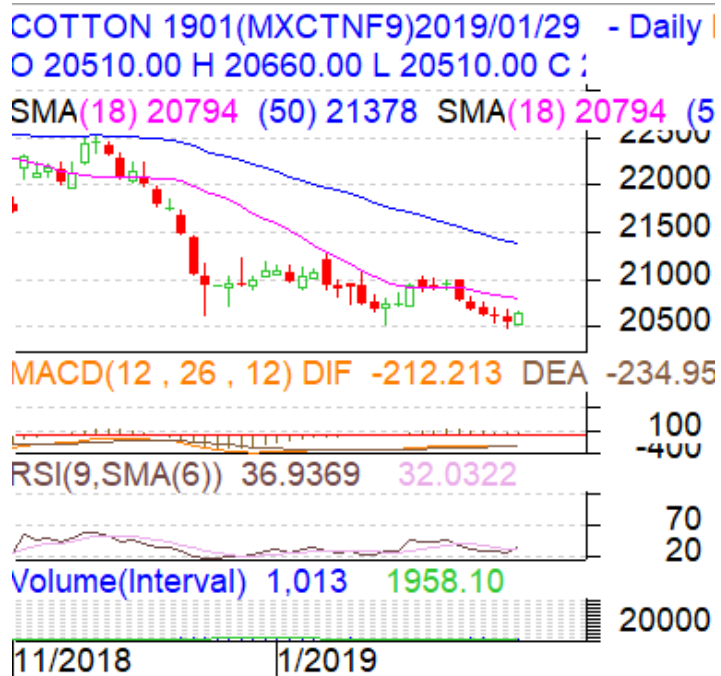


**Commodity: Cotton**  
**Contract: JAN**
**Exchange: MCX**  
**Expiry: Jan 31, 2019**
**Cotton**
**Technical Commentary:**

- On the technical front, the cotton 29 mm January contract at MCX shows some recovery. However, still the trend is down as prices are trading below 20-day EMA on the daily chart
- Candlestick pattern of daily chart shows bearish movement in the market on low selling pressures.
- Low prices and high volume indicate short build up phase of the market.
- Oscillator like RSI fell and indicates further fall in the market.
- We will advise traders to buy today.


**Strategy: BUY**

Intraday Supports & Resistances			S2	S1	PCP	R1	R2
Cotton	MCX	JAN	20400	20500	20640	21400	21500
Intraday Trade Call			Call	Entry	T1	T2	SL
Cotton	MCX	JAN	<b>BUY</b>	20650	20900	21000	20500

\* Do not carry-forward the position next day.

**Commodity: Cotton Seed oil Cake**
**Exchange: NCDEX**
**Contract: FEB**
**Expiry: Feb 20, 2019**
**Cotton**
**Technical Commentary:**

- Candlestick pattern depicts the firm situation in the market.
- Prices closed above 9 and 18 days EMA
- Oscillator like RSI fell and indicates further fall in the market.
- MACD is in positive territory
- We will advise traders to sell today.

**COTTON SEED OIL 1st(NCCOUC1)2019/01/29**  
**O 2036.50 H 2057.00 L 2030.00 C 2049.00**
**SMA(18) 1954.1 (50) 1920.4**

**Strategy: Sell**

Intraday Supports & Resistances			S2	S1	PCP	R1	R2
Cotton oil cake	NCDEX	FEB	1900	1950	2049	2450	2550
Intraday Trade Call			Call	Entry	T1	T2	SL
Cotton oil cake	NCDEX	FEB	<b>Sell</b>	2040-2060	2030	2060	2034

\* Do not carry-forward the position next day.

**Disclaimer**

The information and opinions contained in the document have been compiled from sources believed to be reliable. The company does not warrant its accuracy, completeness and correctness. Use of data and information contained in this report is at your own risk. This document is not, and should not be construed as, an offer to sell or solicitation to buy any commodities. This document may not be reproduced, distributed or published, in whole or in part, by any recipient hereof for any purpose without prior permission from the Company. IASL and its affiliates and/or their officers, directors and employees may have positions in any commodities mentioned in this document (or in any related investment) and may from time to time add to or dispose of any such commodities (or investment). Please see the detailed disclaimer at <http://www.agriwatch.com/Disclaimer.asp>  
 © 2019 Indian Agribusiness Systems Ltd.