

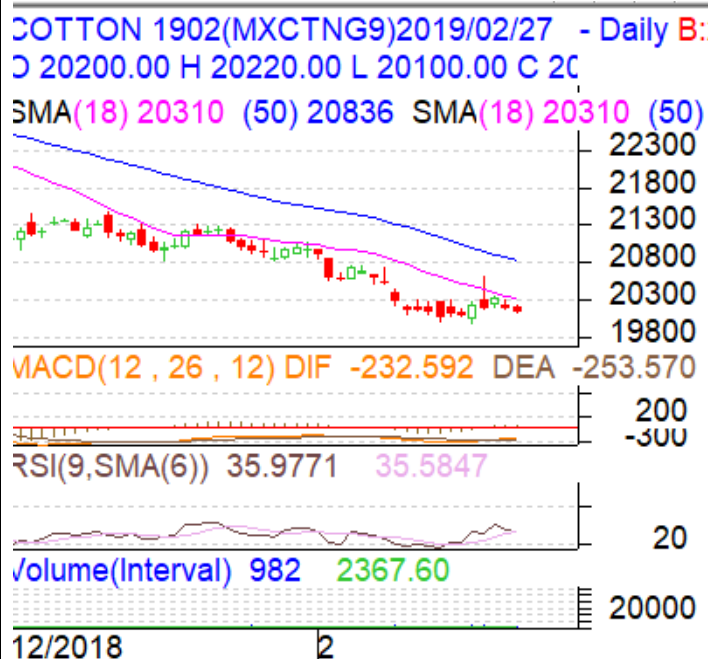
Commodity: Cotton
Contract: FEB

Exchange: MCX
Expiry: FEB 28, 2019

Cotton

Technical Commentary:

- Cotton 29 mm MCX February contract broke the important support of 20'500.
- Relative strength indicator (RSI) is in the oversold region on the daily chart which suggests that the prices could consolidate in the near term, but overall trend remain bearish.
- Candlestick pattern of daily chart shows bearish movement in the market on low selling pressures.
- Oscillator like RSI fell and indicates further fall in the market.
- We will advise traders to buy today.



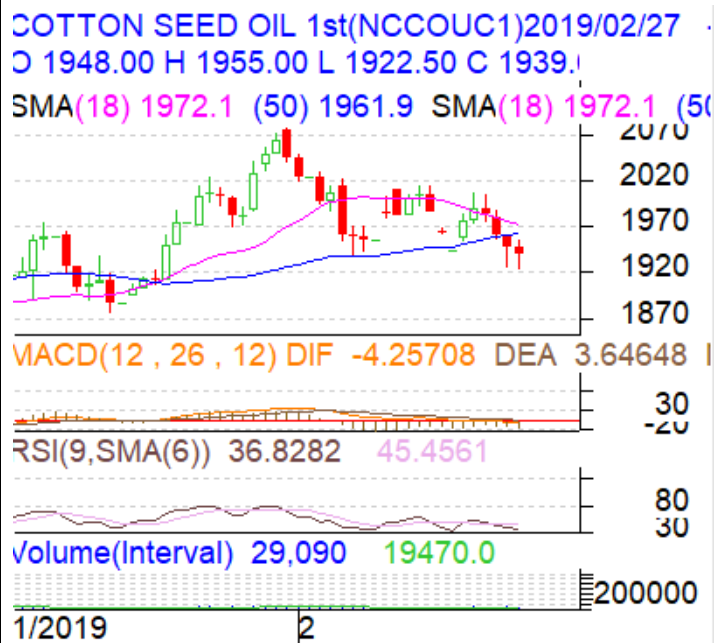
Strategy: **BUY**

Intraday Supports & Resistances			S2	S1	PCP	R1	R2
Cotton	MCX	FEB	19900	20000	20130	20700	20800
Intraday Trade Call			Call	Entry	T1	T2	SL
Cotton	MCX	FEB	BUY	20000-20180	20300	20400	19820

* Do not carry-forward the position next day.

Commodity: Cotton Seed oil Cake
Exchange: NCDEX
Contract: Mar
Expiry: Mar 20, 2019
Cotton
Technical Commentary:

- Candlestick pattern depicts the weak situation in the market.
- Prices closed below 9 and 18 days EMA
- Oscillator like RSI fell and indicates further fall in the market.
- MACD is in positive territory
- We will advise traders to sell today.


Strategy: Buy

Intraday Supports & Resistances			S2	S1	PCP	R1	R2
Cotton oil cake	NCDEX	Mar	1910	1930	1939	2200	2300
Intraday Trade Call			Call	Entry	T1	T2	SL
Cotton oil cake	NCDEX	Mar	Buy	1930-1940	2000	2020	1888

* Do not carry-forward the position next day.

Disclaimer

The information and opinions contained in the document have been compiled from sources believed to be reliable. The company does not warrant its accuracy, completeness and correctness. Use of data and information contained in this report is at your own risk. This document is not, and should not be construed as, an offer to sell or solicitation to buy any commodities. This document may not be reproduced, distributed or published, in whole or in part, by any recipient hereof for any purpose without prior permission from the Company. IASL and its affiliates and/or their officers, directors and employees may have positions in any commodities mentioned in this document (or in any related investment) and may from time to time add to or dispose of any such commodities (or investment). Please see the detailed disclaimer at <http://www.agriwatch.com/Disclaimer.asp>
 © 2019 Indian Agribusiness Systems Ltd.